

नेपाल दूरसञ्चार प्राधिकरण  
**Nepal Telecommunications Authority**

मोबाइल सेवाको गुणस्तर परीक्षण (ड्राइभ टेष्ट ) प्रतिवेदन

काठमाण्डौ उपत्यका

२०७८ पुष

**Report on Quality Test (Drive Test) of Mobile Services**

**Kathmandu Valley**

**December 2021 - January 2022**

## १. परीक्षण अवधि

मिति २०७८ पुष १६ देखि २७ सम्म।

## A. Test Duration

From December 31<sup>st</sup> 2021 to January 11  
2022.

## २. परीक्षण गरिएका नेटवर्कहरू

नेपाल दूरसञ्चार कम्पनी लिमिटेड (नेपाल टेलिकम)  
एनसेल आजियटा लिमिटेड  
स्मार्ट टेलिकम प्रा. लिमिटेड

## B. Tested Networks

Nepal Telecom  
Ncell Axiata Ltd.  
Smart Telecom P. Ltd.

## ३. परीक्षणको विधि

ड्राइभ टेस्ट: यस विधिमा चलायमान सवारीसाधनमा जडान गरिएको परीक्षण उपकरणद्वारा लगातार फोनकल गरी वा डाटा प्रयोग गरी मोबाइल नेटवर्कको मुख्य मुख्य सेवा मानकहरूको तथ्यांक संकलन गरिन्छ।  
कुनै एक स्थानमा उपलब्ध सबै सेवा प्रदायकहरूको गुणस्तर मापन समानान्तर रूपमा एकैसाथ गरिन्छ।  
हरेक सेवा प्रदायकको कुनै एक स्थानमा उपलब्ध नेटवर्क (4G/3G/2G) मध्ये सर्वाधिक अनुकूल नेटवर्क स्वचालित रूपमा छनौट हुने गरी उपकरणमा व्यवस्था गरिन्छ।

**Drive Test:** It is a method in which testing tools mounted on a moving vehicle collect key performance indicators (KPIs) of the cellular network by repeatedly making voice or data calls. All the available service providers at the location are tested simultaneously.

The tools are configured in a way so that a favorable network (4G/ 3G/ 2G) is selected for each service providers automatically as per availability.

Drive Test Tool: JDSU E6474A.  
Post Processing Tool: Gladiator.

## ४. कल परीक्षण अवधि

(कल अवधि: १२० सेकेन्ड)  
(सेवा प्रदायकको आफ्नै नेटवर्क भित्र लोकल कल गरिएको)

## D. Call Test Duration

(Call Duration: 120 Seconds)  
(Local Calls inside own network of the Service Provider)

## ५. परीक्षणको नतिजा :

प्राधिकरणले काठमाण्डौ उपत्यकाका विभिन्न स्थानहरूमा मिति २०७८/०९/१६ देखि २०७८/०९/२७ गतेसम्म मोबाईल सेवाप्रदायकहरूको भ्वाईस सेवाको गुणस्तर परीक्षण गरि प्राप्त नतिजालाई क्षेत्रगत रूपमा यस प्रतिवेदनमा प्रस्तुत गरिएको छ।

### ड्राईभ टेष्ट को क्षेत्रगत नतिजा

ड्राईभ टेष्ट गरिएको मिति: २०७८/०९/१६

ड्राईभ टेष्ट गरिएका क्षेत्र : नयाँ बानेश्वर, शंखमुल, ग्वाको, इमाडोल, सानागाउँ, लुभु, लामाटार

मोबाईल सेवाप्रदायक : नेपाल दूरसंचार कम्पनी लि.

#### CALL TEST REPORT

##### OPERATOR INFORMATION

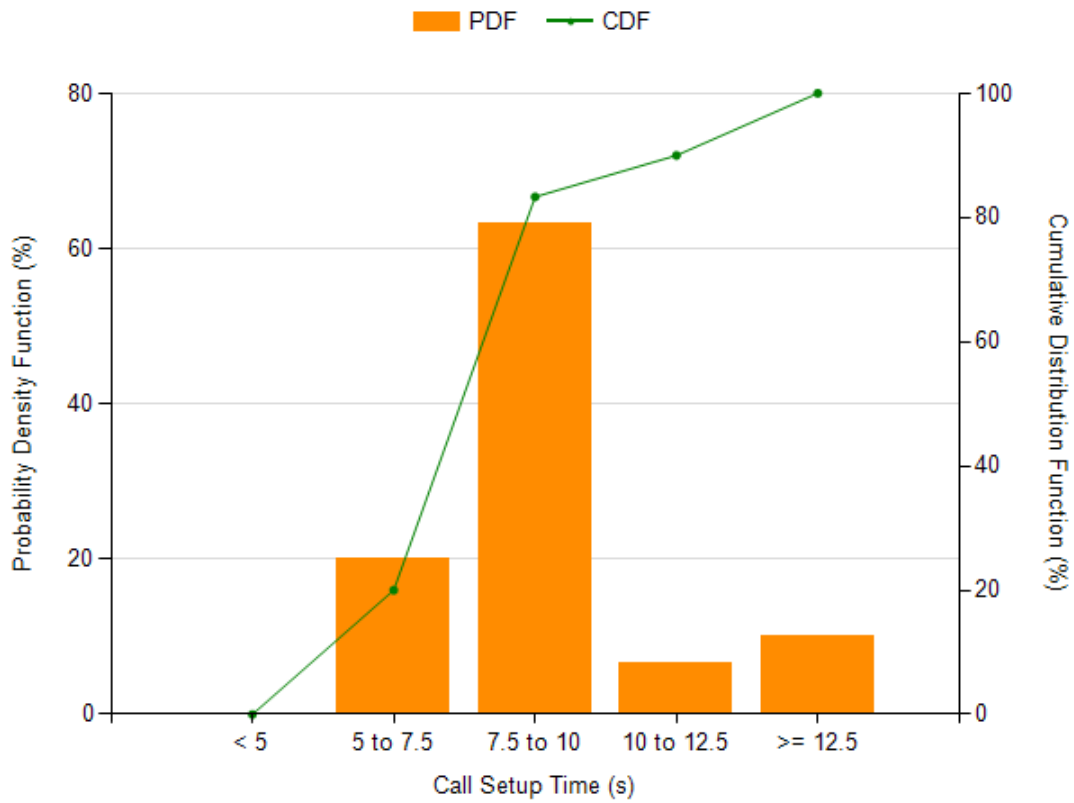
Device Label	Mobile Country Code (MCC)	Mobile Network Code (MNC)
NDCL	429	1

##### CALL SETUP SUCCESS RATE

Call Setup Success Rate		
Total Attempts	Established Calls	Call Setup Success Rate (%)
29	28	96.55

##### CALL SETUP TIME

Call Setup/Connection Time			
Setup Time (s)	Standard Deviation (s)	Minimum (s)	Maximum (s)
9.21	2.22	6.84	16.34

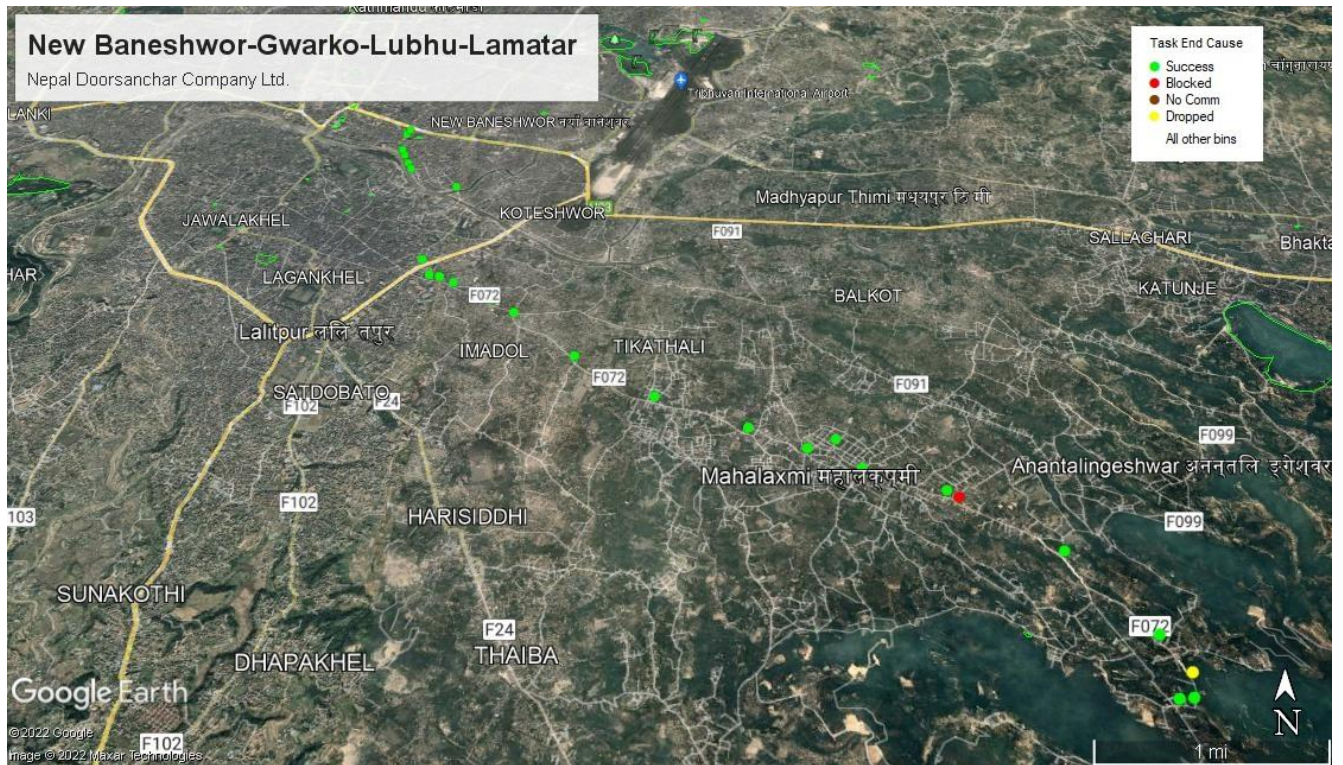


### CALL BLOCK RATE

Call Block Rate			
Attempted Calls	Established Calls	Blocked Calls	Call Block Rate (%)
29	28	1	3.45

### CALL DROP RATE

Call Drop Rate			
Total Attempts	Established Calls	Dropped Calls	Call Drop Rate (%)
29	28	1	3.57



मोबाईल सेवाप्रदायक : एनसेल आजियटा लि.

## CALL TEST REPORT

### OPERATOR INFORMATION

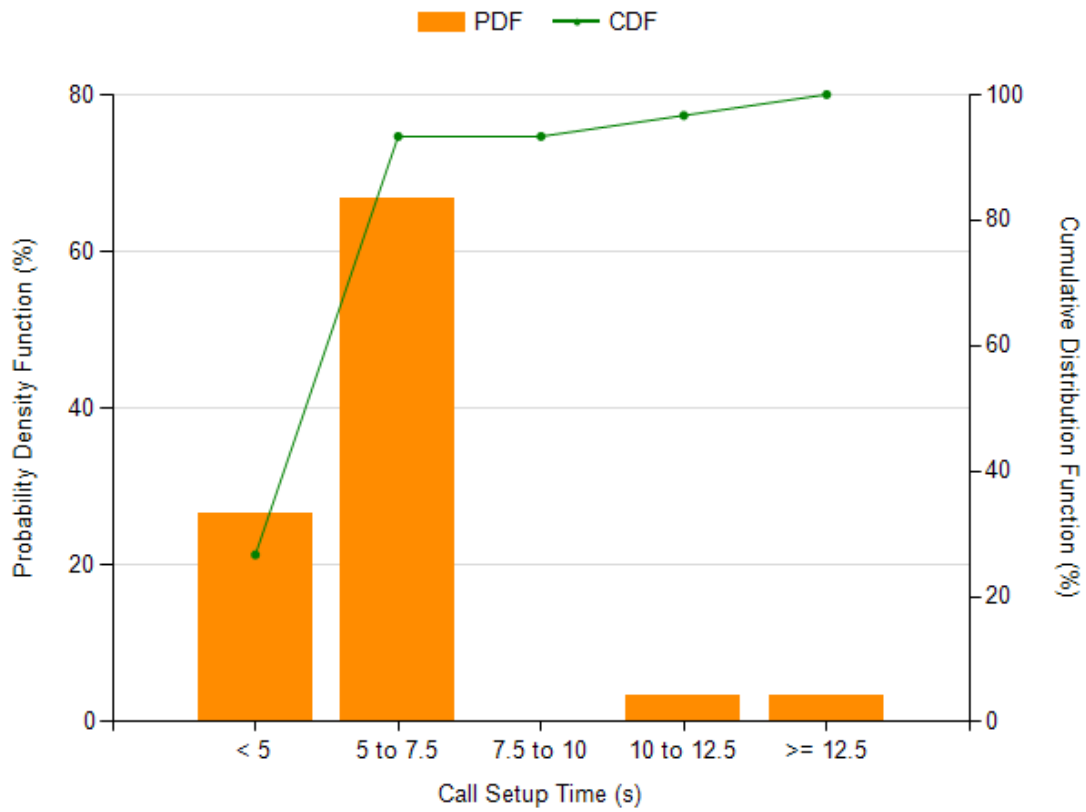
Device Label	Mobile Country Code (MCC)	Mobile Network Code (MNC)
NCELL	429	2

### CALL SETUP SUCCESS RATE

Call Setup Success Rate		
Total Attempts	Established Calls	Call Setup Success Rate (%)
28	27	96.43

### CALL SETUP TIME

Call Setup/Connection Time			
Setup Time (s)	Standard Deviation (s)	Minimum (s)	Maximum (s)
6.06	1.77	4.31	13.08

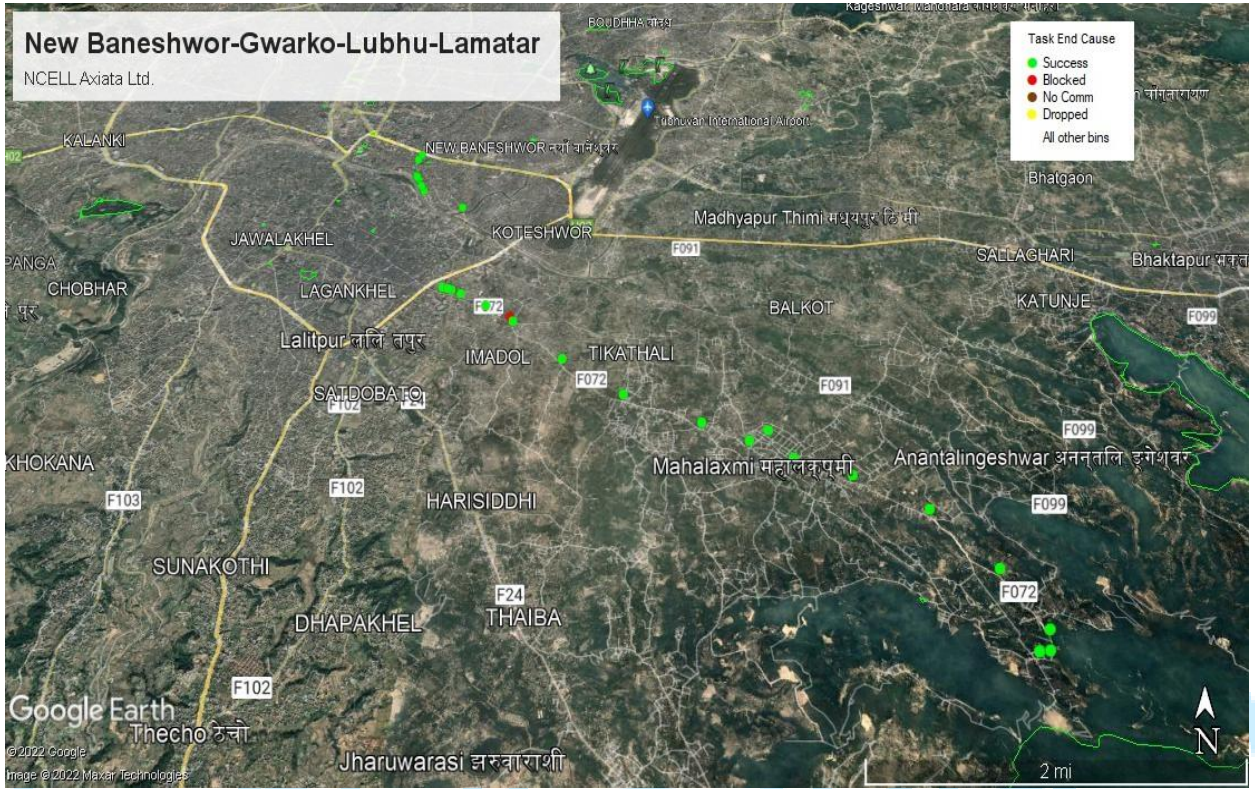


### CALL BLOCK RATE

Call Block Rate			
Attempted Calls	Established Calls	Blocked Calls	Call Block Rate (%)
28	27	1	3.57

### CALL DROP RATE

Call Drop Rate			
Total Attempts	Established Calls	Dropped Calls	Call Drop Rate (%)
28	27	0	0



मोबाईल सेवाप्रदायक : स्मार्ट टेलिकम प्रा. लि.

## CALL TEST REPORT

### OPERATOR INFORMATION

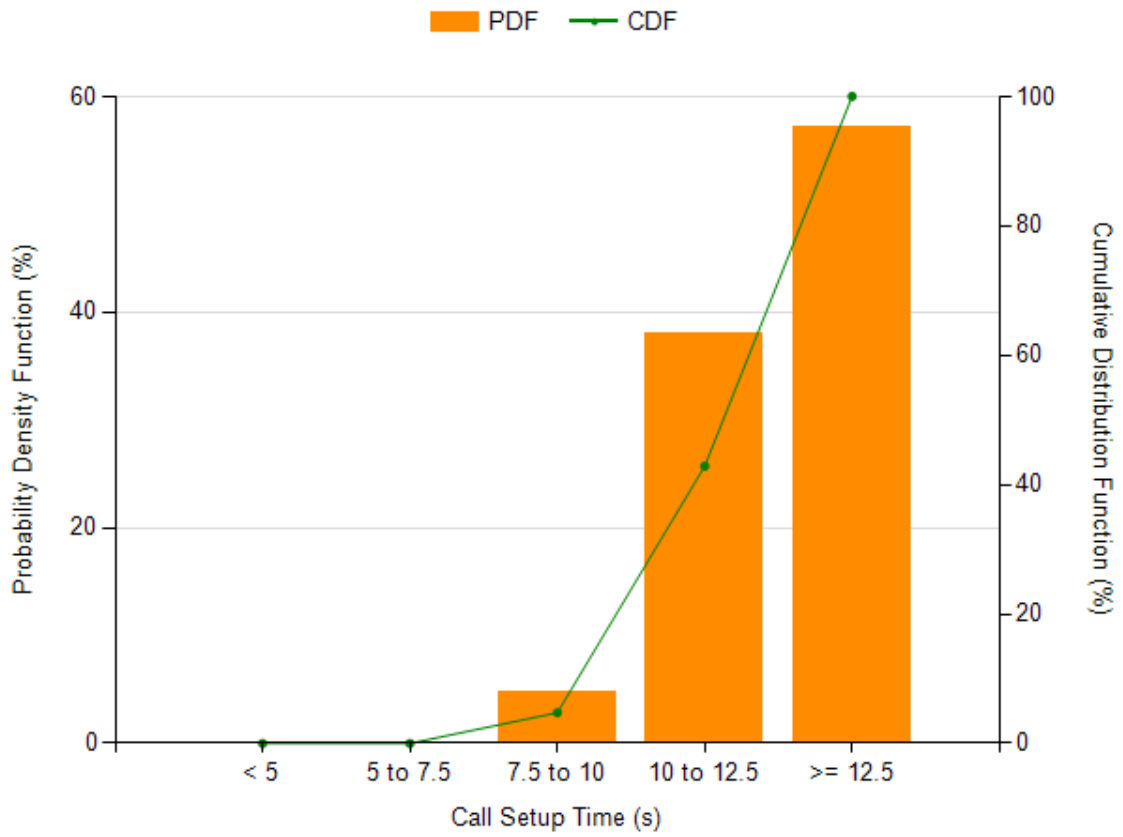
Device Label	Mobile Country Code (MCC)	Mobile Network Code (MNC)
SMART	429	4

### CALL SETUP SUCCESS RATE

Call Setup Success Rate		
Total Attempts	Established Calls	Call Setup Success Rate (%)
58	20	34.48

### CALL SETUP TIME

Call Setup/Connection Time			
Setup Time (s)	Standard Deviation (s)	Minimum (s)	Maximum (s)
12.87	1.99	9.66	17.36



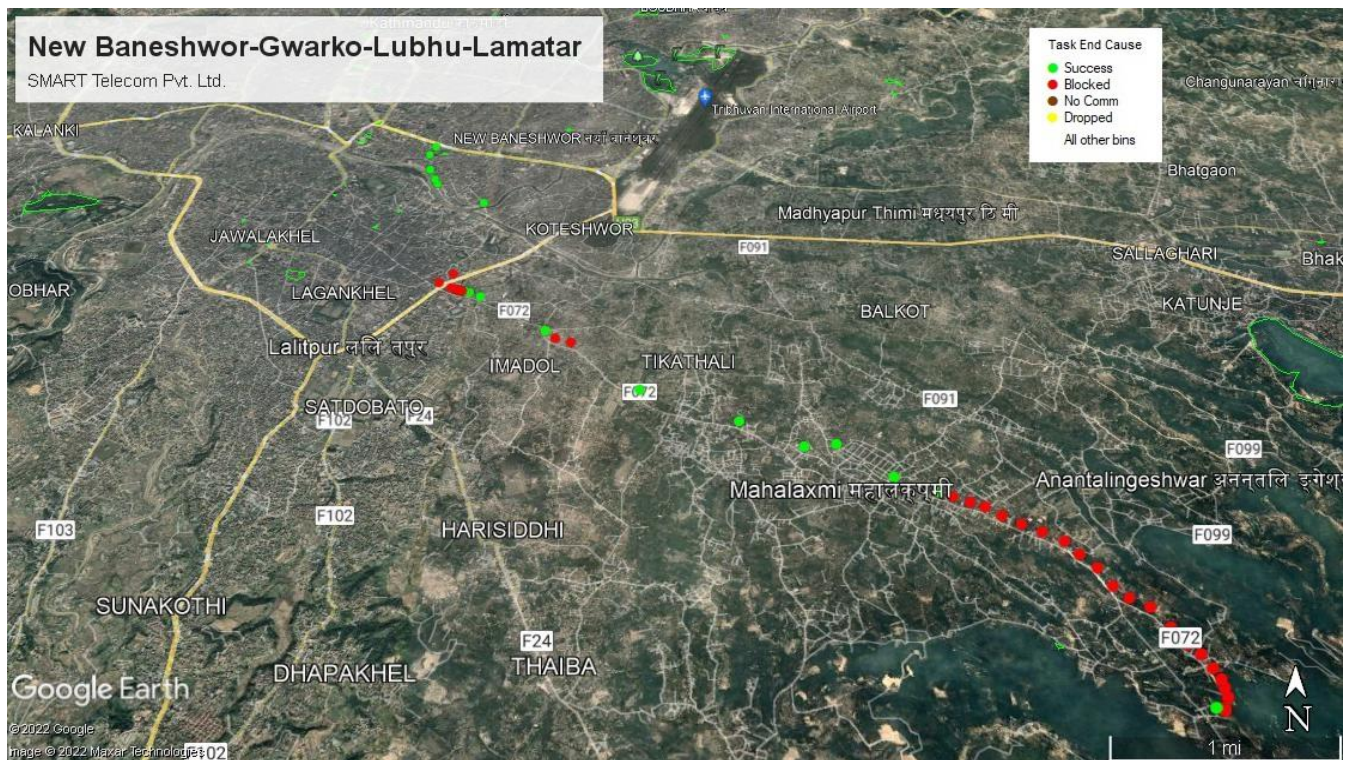
### CALL BLOCK RATE

Call Block Rate			
Attempted Calls	Established Calls	Blocked Calls	Call Block Rate (%)
58	20	38	65.52

### CALL DROP RATE

Call Drop Rate			
Total Attempts	Established Calls	Dropped Calls	Call Drop Rate (%)
58	20	0	0





ड्राइभ टेष्ट गरिएको मिति: २०७८/०९/१८

ड्राइभ टेष्ट गरिएका क्षेत्र : इमाडोल, ग्वाको , सातदोबाटो, एकान्तकुना, धोबिघाट, बल्लु, कलंकी, स्वयम्भु , बनस्थली, नयाँ बजार , सोह्रखुट्टे, ठमेल

मोबाईल सेवाप्रदायक : नेपाल दूरसंचार कम्पनी लि.

## CALL TEST REPORT

### OPERATOR INFORMATION

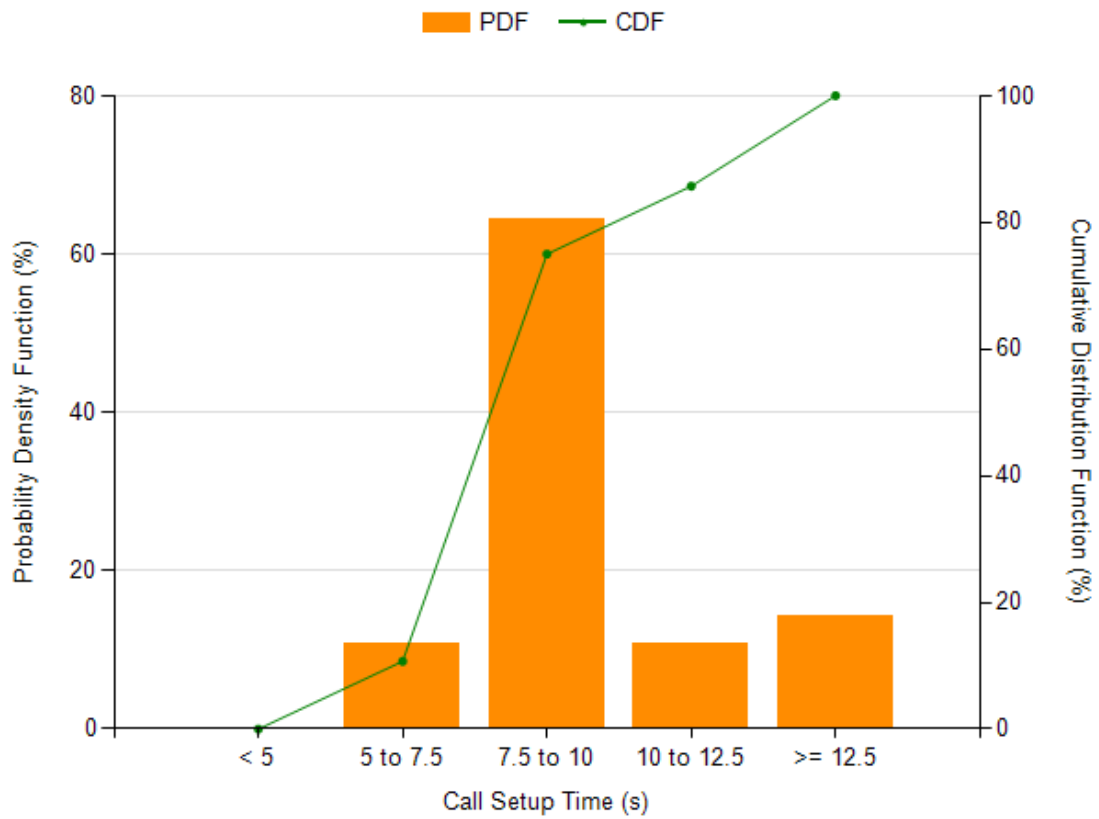
Device Label	Mobile Country Code (MCC)	Mobile Network Code (MNC)
NDCL	429	1

### CALL SETUP SUCCESS RATE

Call Setup Success Rate		
Total Attempts	Established Calls	Call Setup Success Rate (%)
29	27	93.1

### CALL SETUP TIME

Call Setup/Connection Time			
Setup Time (s)	Standard Deviation (s)	Minimum (s)	Maximum (s)
9.62	2.67	6.64	16.77

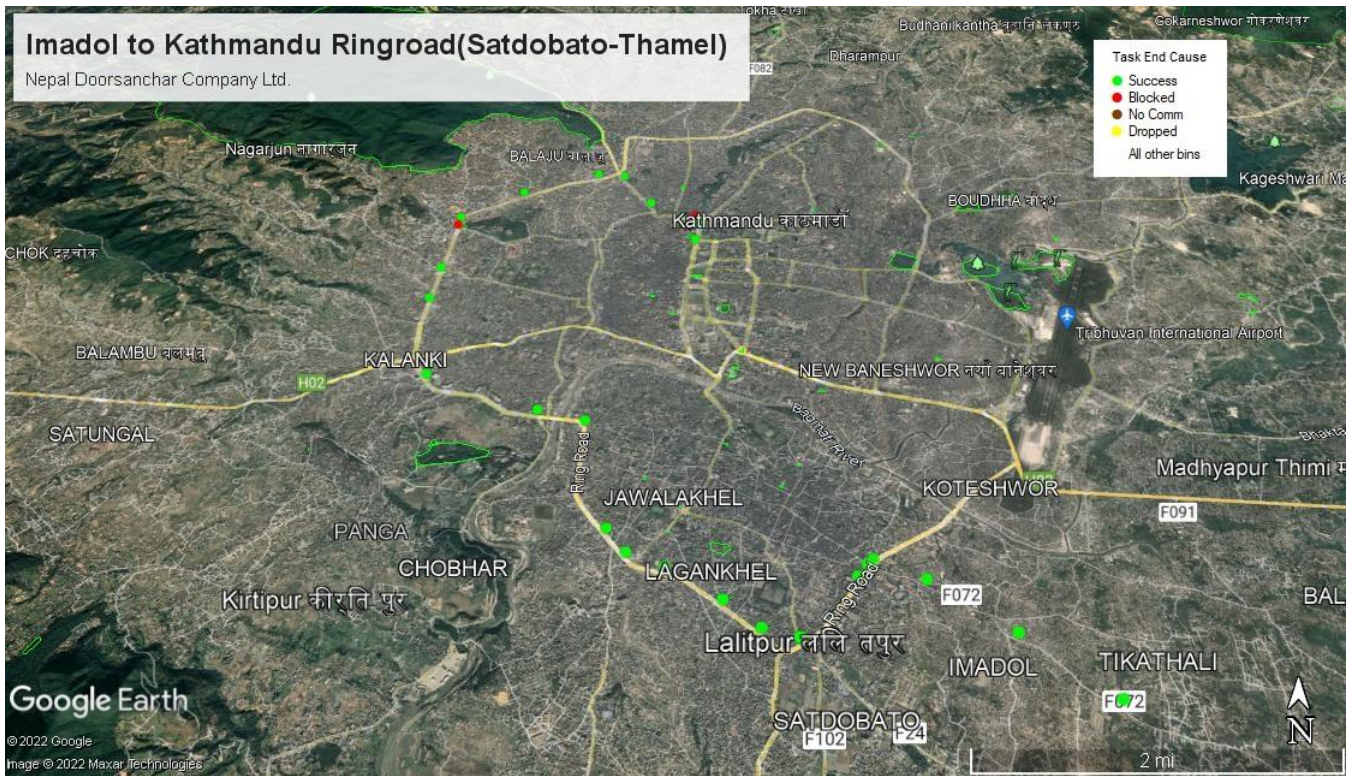


### CALL BLOCK RATE

Call Block Rate			
Attempted Calls	Established Calls	Blocked Calls	Call Block Rate (%)
29	27	2	6.9

### CALL DROP RATE

Call Drop Rate			
Total Attempts	Established Calls	Dropped Calls	Call Drop Rate (%)
29	27	0	0



मोबाईल सेवाप्रदायक : एनसेल अजियटा लि.

### CALL TEST REPORT

#### OPERATOR INFORMATION

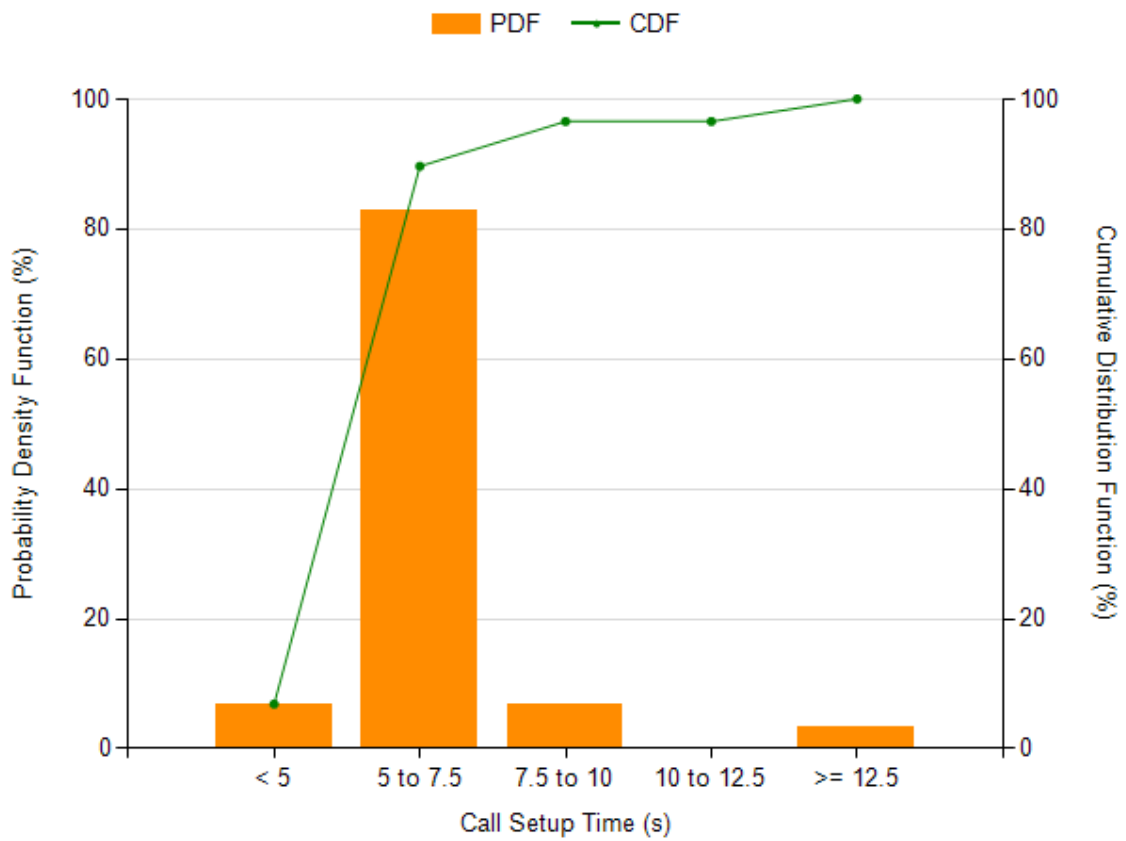
Device Label	Mobile Country Code (MCC)	Mobile Network Code (MNC)
NCELL	429	2

#### CALL SETUP SUCCESS RATE

Call Setup Success Rate		
Total Attempts	Established Calls	Call Setup Success Rate (%)
31	28	90.32

#### CALL SETUP TIME

Call Setup/Connection Time			
Setup Time (s)	Standard Deviation (s)	Minimum (s)	Maximum (s)
6.52	1.51	4.31	12.95

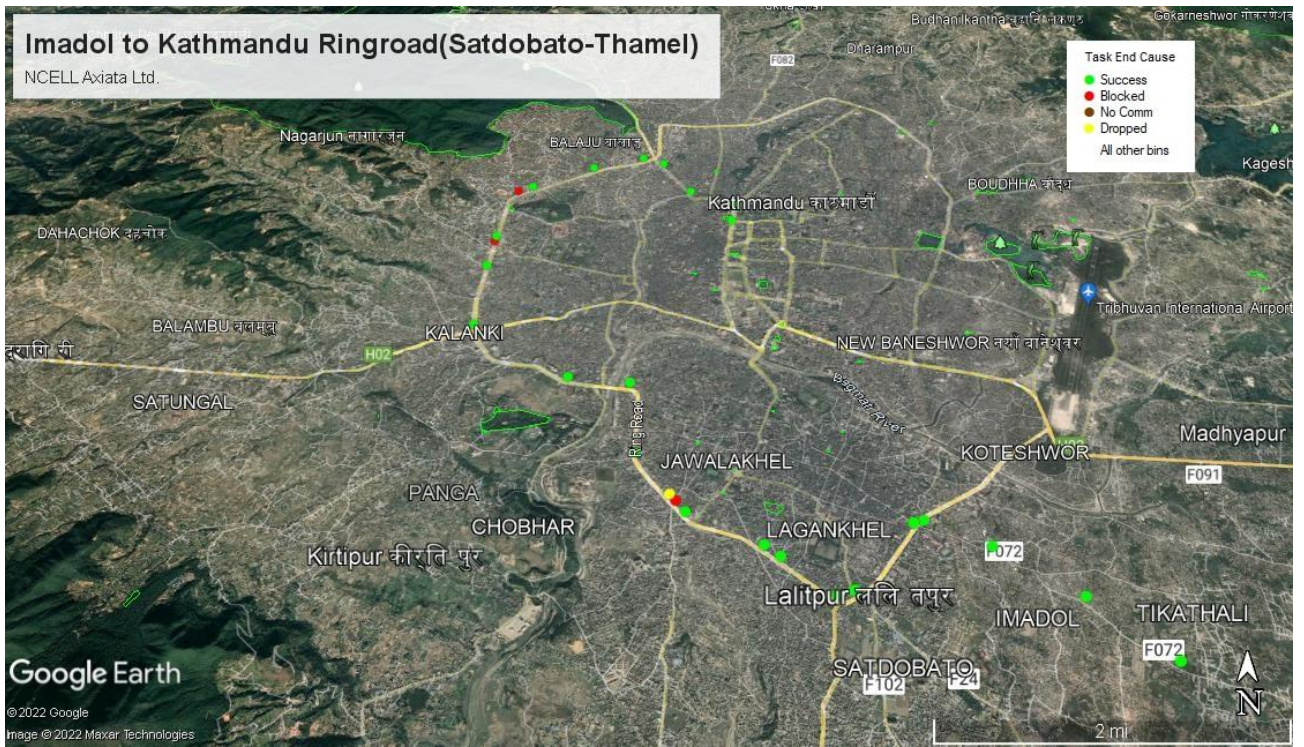


### CALL BLOCK RATE

Call Block Rate			
Attempted Calls	Established Calls	Blocked Calls	Call Block Rate (%)
31	28	3	9.68

### CALL DROP RATE

Call Drop Rate			
Total Attempts	Established Calls	Dropped Calls	Call Drop Rate (%)
31	28	1	3.57



मोबाईल सेवाप्रदायक : स्मार्ट टेलिकम प्रा. लि.

## CALL TEST REPORT

### OPERATOR INFORMATION

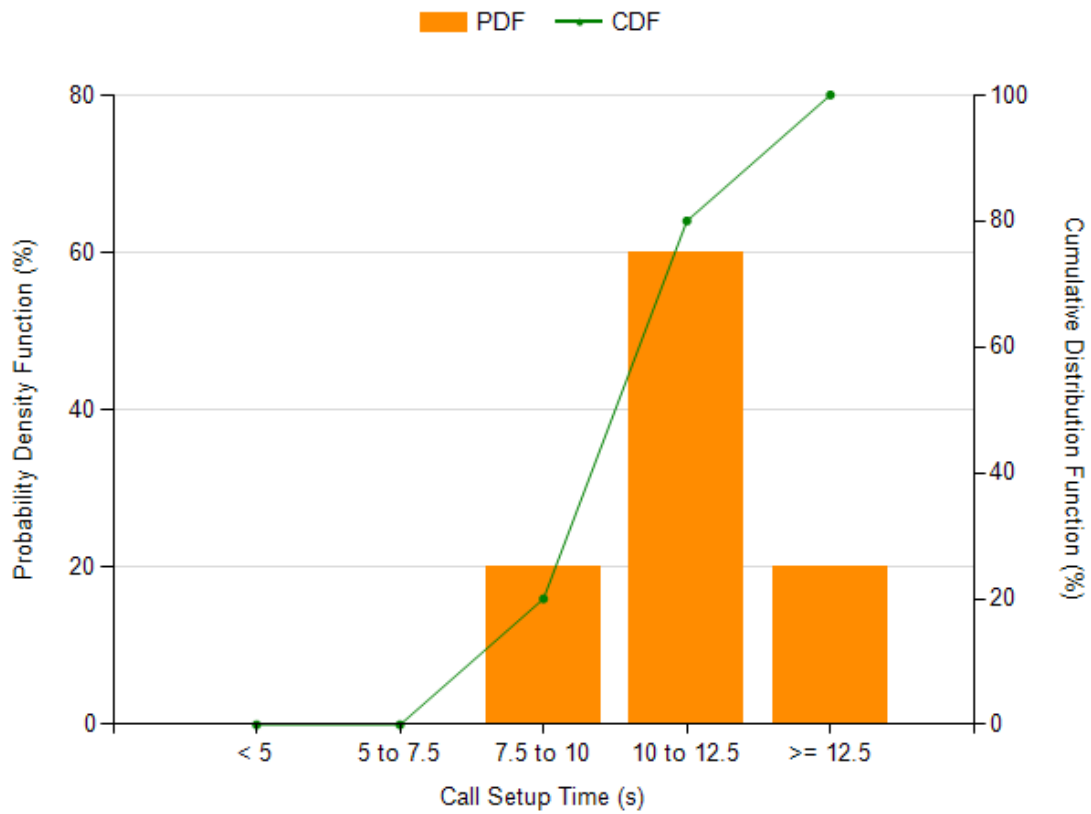
Device Label	Mobile Country Code (MCC)	Mobile Network Code (MNC)
SMART	429	4

### CALL SETUP SUCCESS RATE

Call Setup Success Rate		
Total Attempts	Established Calls	Call Setup Success Rate (%)
41	25	60.98

### CALL SETUP TIME

Call Setup/Connection Time			
Setup Time (s)	Standard Deviation (s)	Minimum (s)	Maximum (s)
11.5	1.67	9.14	16.03

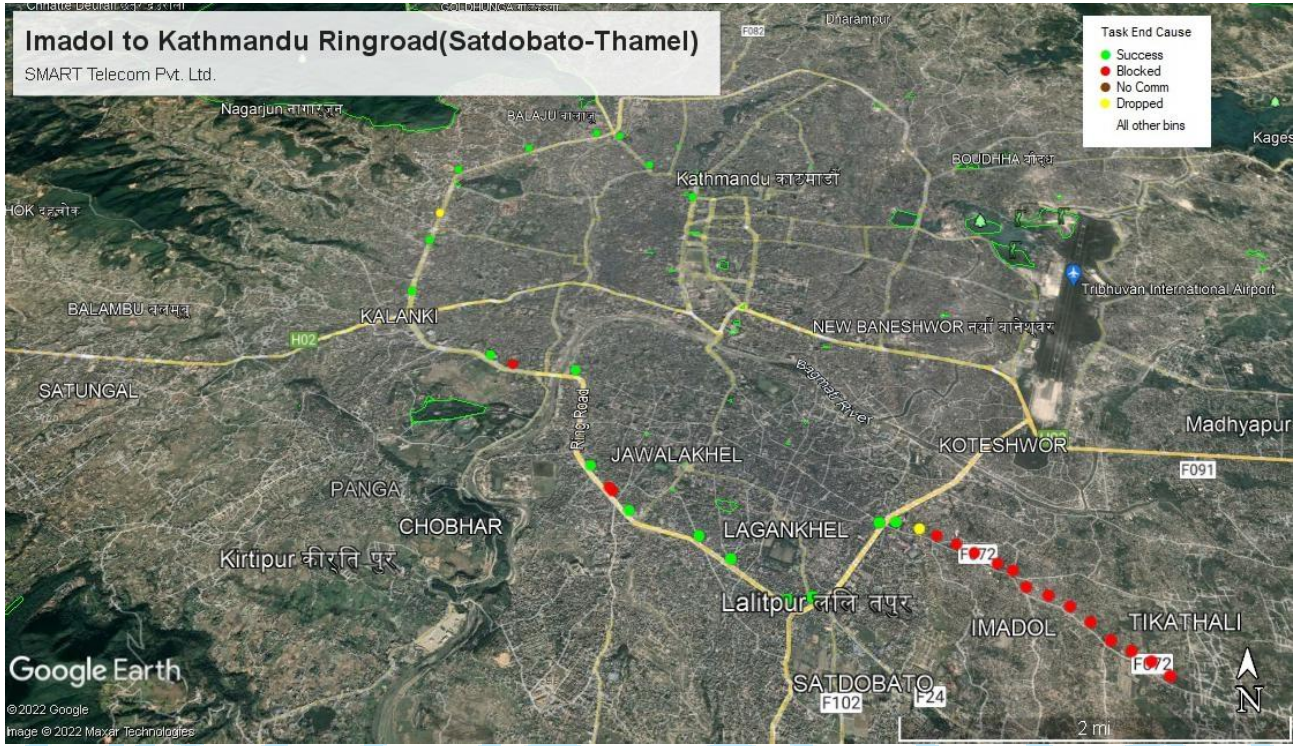


### CALL BLOCK RATE

Call Block Rate			
Attempted Calls	Established Calls	Blocked Calls	Call Block Rate (%)
41	25	16	39.02

### CALL DROP RATE

Call Drop Rate			
Total Attempts	Established Calls	Dropped Calls	Call Drop Rate (%)
41	25	2	8



ड्राइभ टेष्ट गरिएको मिति: २०७८/०९/१९

ड्राइभ टेष्ट गरिएका क्षेत्र : जमल, ज्ञानेश्वर, गौशाला, गौरीघाट, चाबहिल, त्रिभुवन विमानस्थल क्षेत्र, सिनामंगल, कोटेश्वर, बालकुमारी, ग्वाको

मोबाईल सेवाप्रदायक : नेपाल दूरसंचार कम्पनी लि.

## CALL TEST REPORT

### OPERATOR INFORMATION

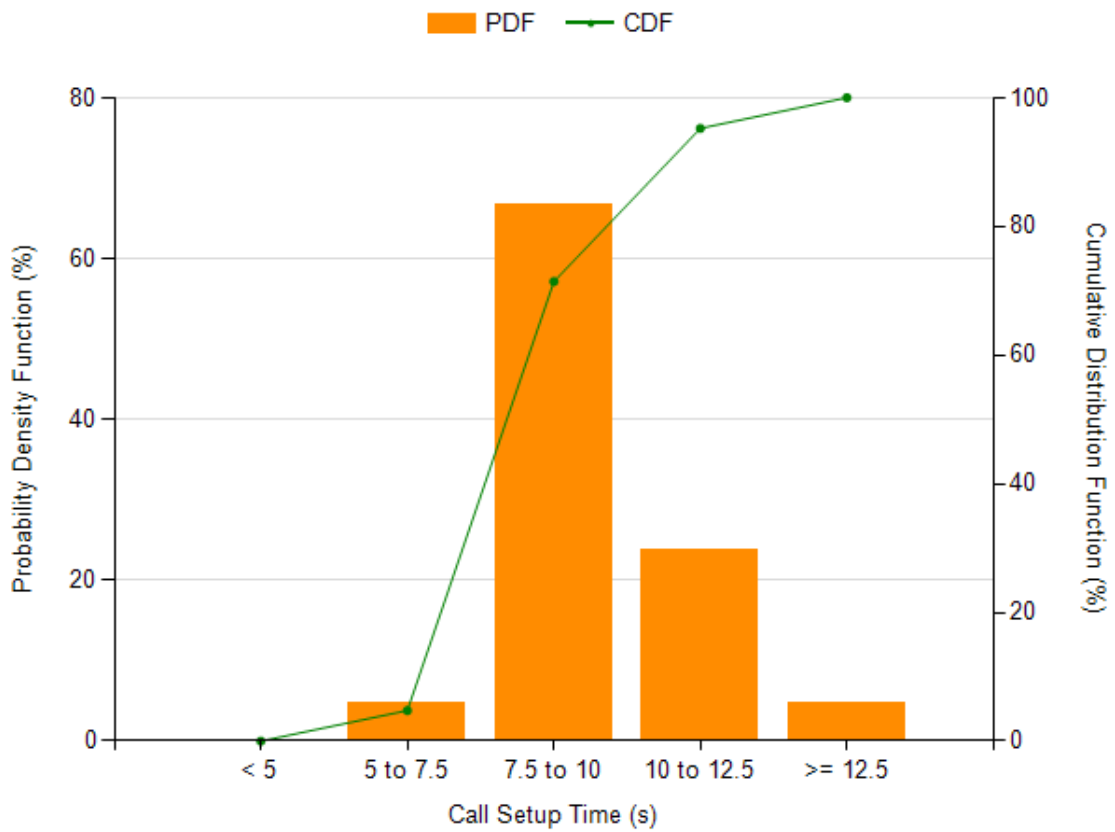
Device Label	Mobile Country Code (MCC)	Mobile Network Code (MNC)
NDCL	429	1

### CALL SETUP SUCCESS RATE

Call Setup Success Rate		
Total Attempts	Established Calls	Call Setup Success Rate (%)
28	21	75

### CALL SETUP TIME

Call Setup/Connection Time			
Setup Time (s)	Standard Deviation (s)	Minimum (s)	Maximum (s)
9.7	1.62	6.47	14.19



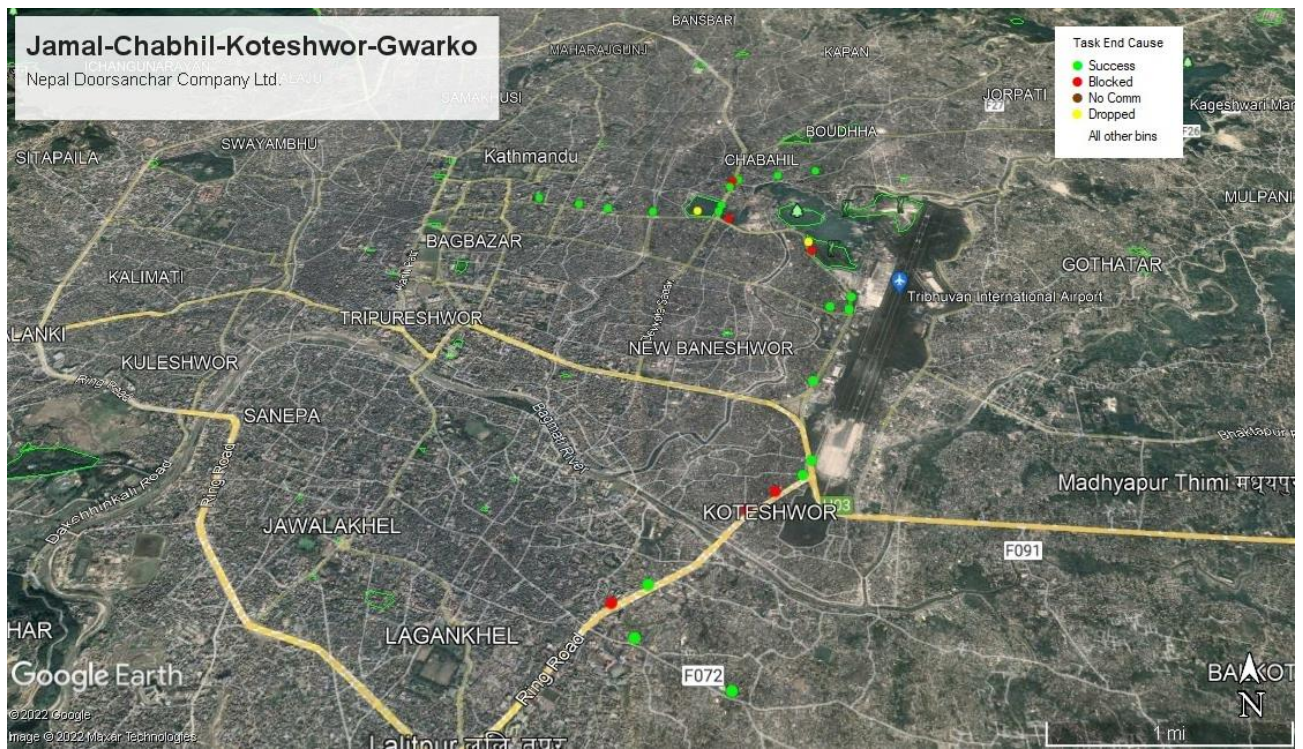
### CALL BLOCK RATE

Call Block Rate			
Attempted Calls	Established Calls	Blocked Calls	Call Block Rate (%)
28	21	7	25

### CALL DROP RATE

Call Drop Rate			
Total Attempts	Established Calls	Dropped Calls	Call Drop Rate (%)
28	21	2	9.52





मोबाईल सेवाप्रदायक : एनसेल अजियटा लि.

## CALL TEST REPORT

### OPERATOR INFORMATION

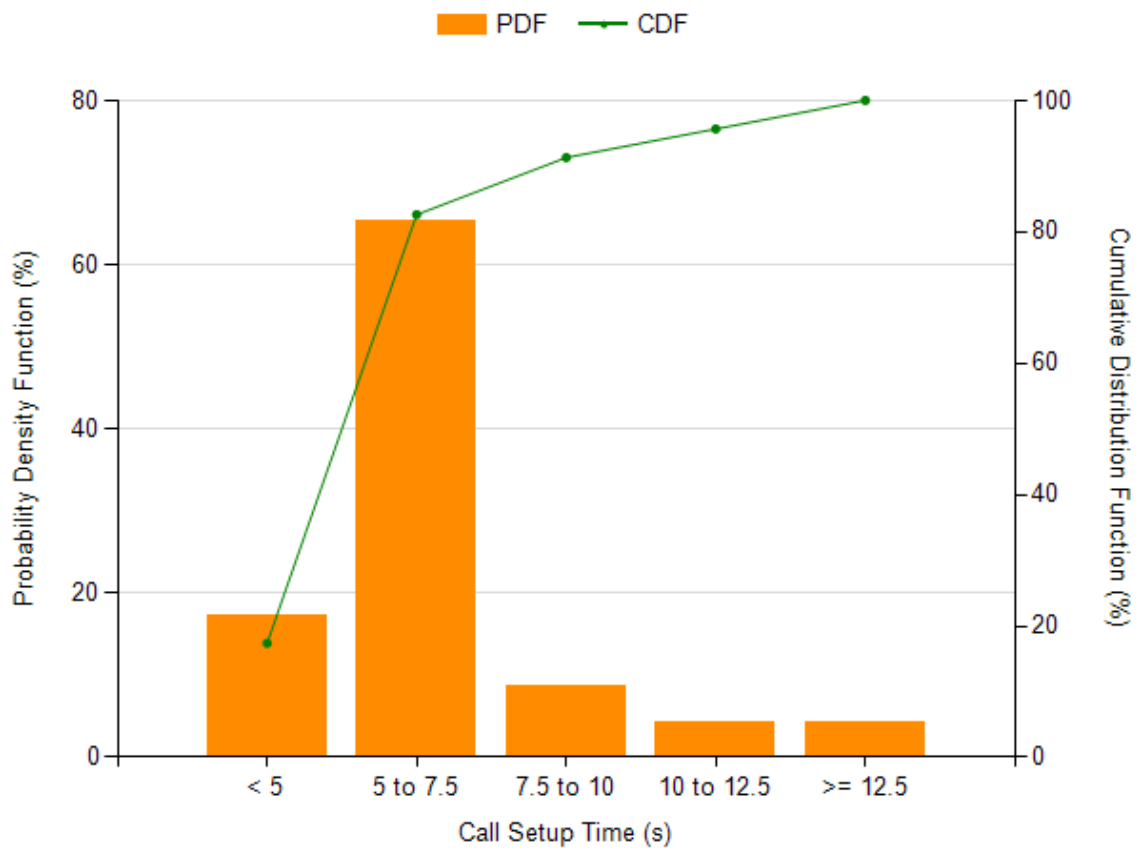
Device Label	Mobile Country Code (MCC)	Mobile Network Code (MNC)
NCELL	429	2

### CALL SETUP SUCCESS RATE

Call Setup Success Rate		
Total Attempts	Established Calls	Call Setup Success Rate (%)
23	22	95.65

### CALL SETUP TIME

Call Setup/Connection Time			
Setup Time (s)	Standard Deviation (s)	Minimum (s)	Maximum (s)
6.44	1.97	4.5	12.84

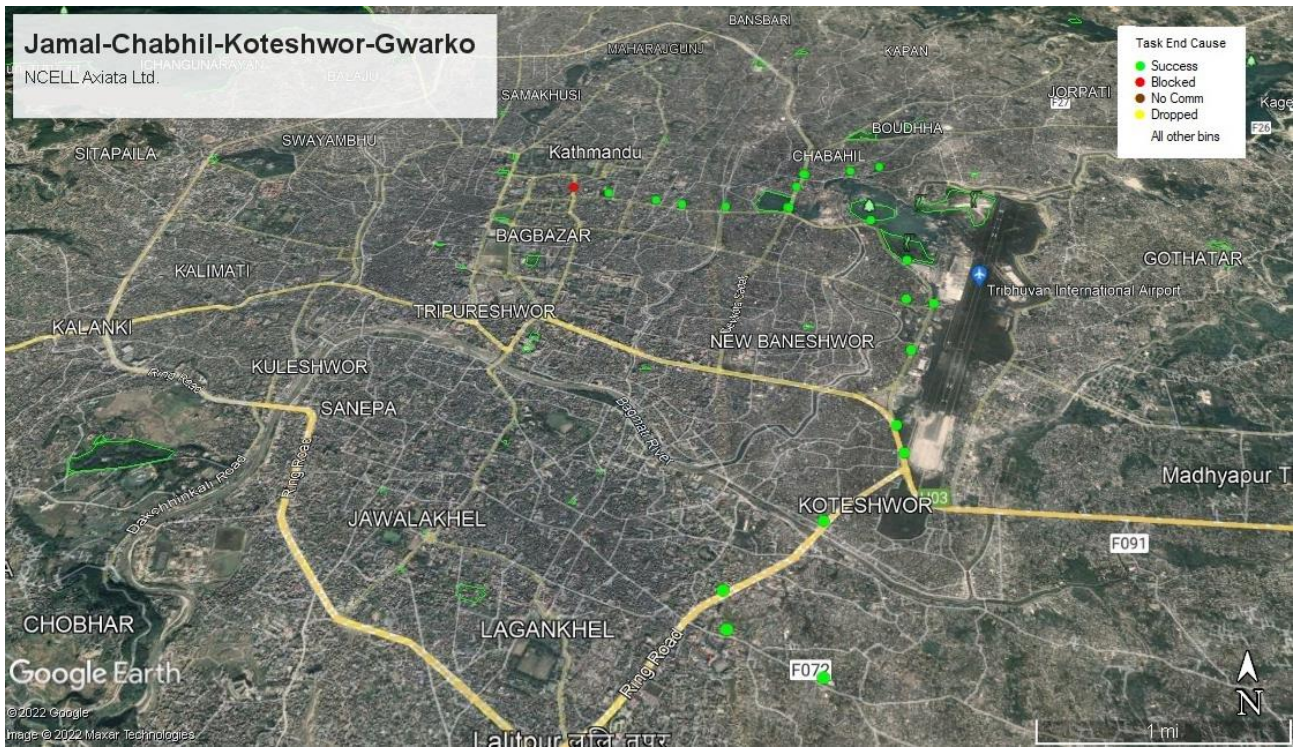


### CALL BLOCK RATE

Call Block Rate			
Attempted Calls	Established Calls	Blocked Calls	Call Block Rate (%)
23	22	1	4.35

### CALL DROP RATE

Call Drop Rate			
Total Attempts	Established Calls	Dropped Calls	Call Drop Rate (%)
23	22	0	0



मोबाईल सेवाप्रदायक : स्मार्ट टेलिकम प्रा. लि.

## CALL TEST REPORT

### OPERATOR INFORMATION

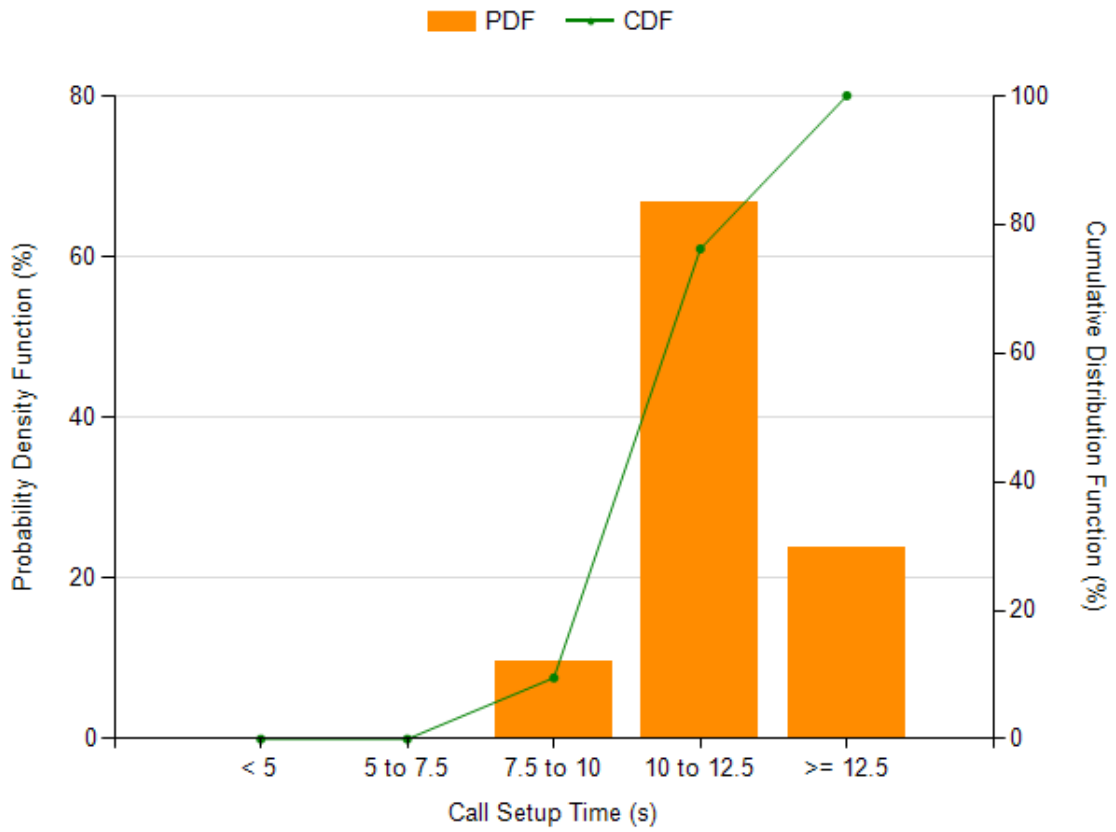
Device Label	Mobile Country Code (MCC)	Mobile Network Code (MNC)
SMART	429	4

### CALL SETUP SUCCESS RATE

Call Setup Success Rate		
Total Attempts	Established Calls	Call Setup Success Rate (%)
23	21	91.3

### CALL SETUP TIME

Call Setup/Connection Time			
Setup Time (s)	Standard Deviation (s)	Minimum (s)	Maximum (s)
11.75	1.85	9.55	16.77

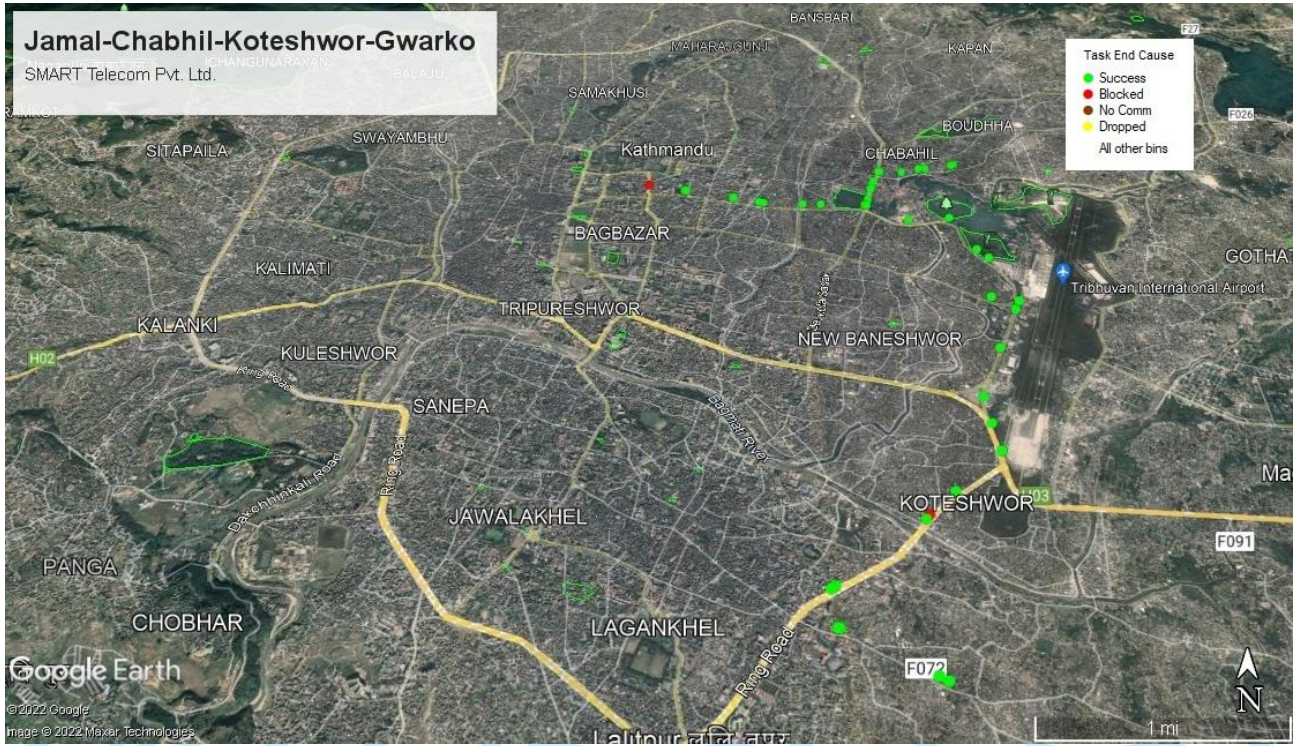


### CALL BLOCK RATE

Call Block Rate			
Attempted Calls	Established Calls	Blocked Calls	Call Block Rate (%)
23	21	2	8.7

### CALL DROP RATE

Call Drop Rate			
Total Attempts	Established Calls	Dropped Calls	Call Drop Rate (%)
23	21	0	0



ड्राइभ टेष्ट गरिएको मिति: २०७८/०९/२०

ड्राइभ टेष्ट गरिएका क्षेत्र : मित्रपार्क, टुसाल, कुमारीगाल, बौद्ध, चाबहिल, धुम्बाराही, कपन, गोल्फुटार, बुढानिलकण्ठ, पासिकोट, हात्तीगौडा, नारायणगोपालचोक, महाराजगंज, लाजिम्पाट, लैनचौर

मोबाईल सेवाप्रदायक : नेपाल दूरसंचार कम्पनी लि.

## CALL TEST REPORT

### OPERATOR INFORMATION

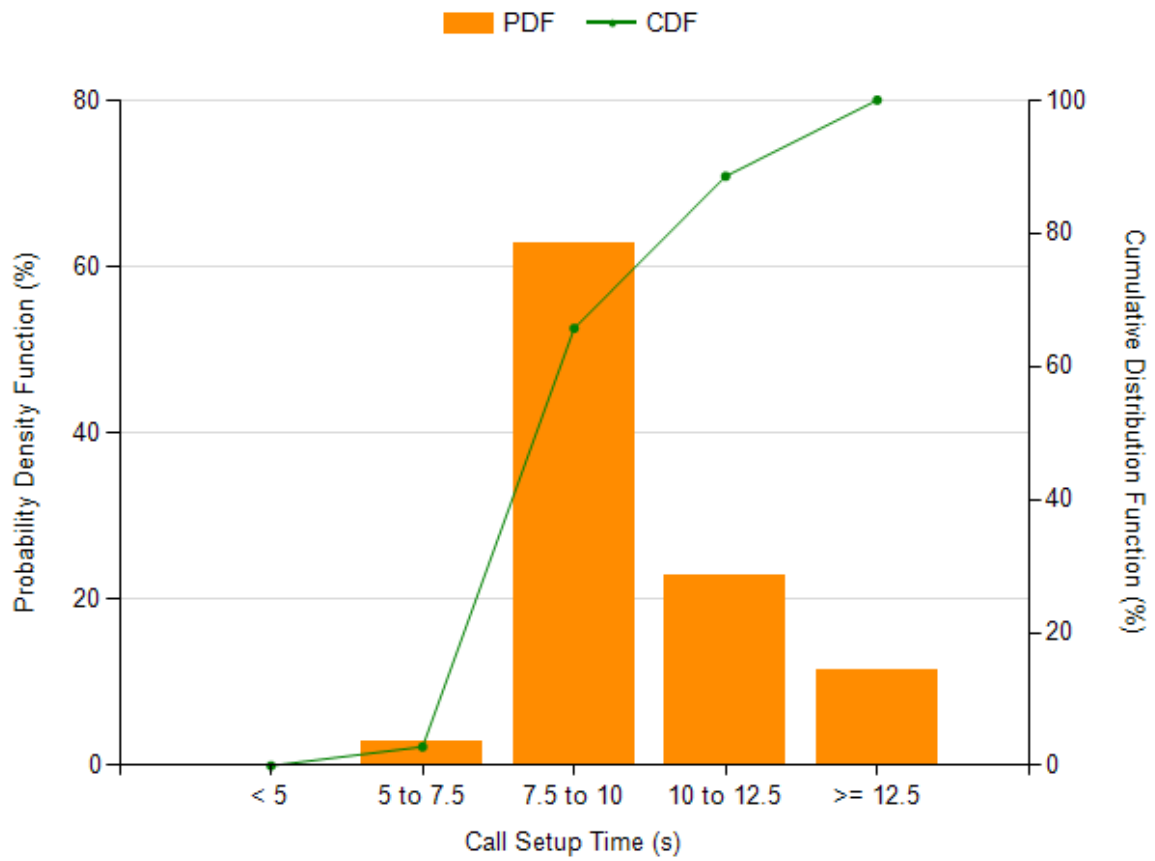
Device Label	Mobile Country Code (MCC)	Mobile Network Code (MNC)
NDCL	429	1

### CALL SETUP SUCCESS RATE

Call Setup Success Rate		
Total Attempts	Established Calls	Call Setup Success Rate (%)
34	33	97.06

### CALL SETUP TIME

Call Setup/Connection Time			
Setup Time (s)	Standard Deviation (s)	Minimum (s)	Maximum (s)
9.88	2.4	6.99	17.24



### CALL BLOCK RATE

Call Block Rate			
Attempted Calls	Established Calls	Blocked Calls	Call Block Rate (%)
34	33	1	2.94

### CALL DROP RATE

Call Drop Rate			
Total Attempts	Established Calls	Dropped Calls	Call Drop Rate (%)
34	33	4	12.12



मोबाईल सेवाप्रदायक : एनसेल अजियटा लि.

## CALL TEST REPORT

### OPERATOR INFORMATION

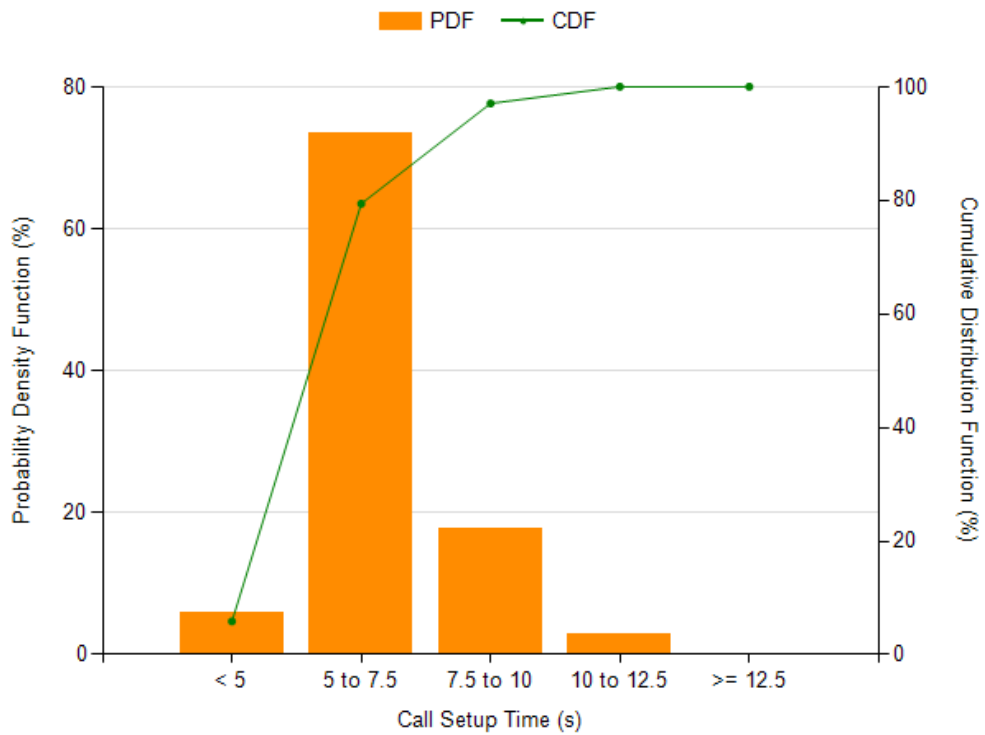
Device Label	Mobile Country Code (MCC)	Mobile Network Code (MNC)
NCELL	429	2

### CALL SETUP SUCCESS RATE

Call Setup Success Rate		
Total Attempts	Established Calls	Call Setup Success Rate (%)
33	32	96.97

### CALL SETUP TIME

Call Setup/Connection Time			
Setup Time (s)	Standard Deviation (s)	Minimum (s)	Maximum (s)
6.31	1.41	4.67	11.39



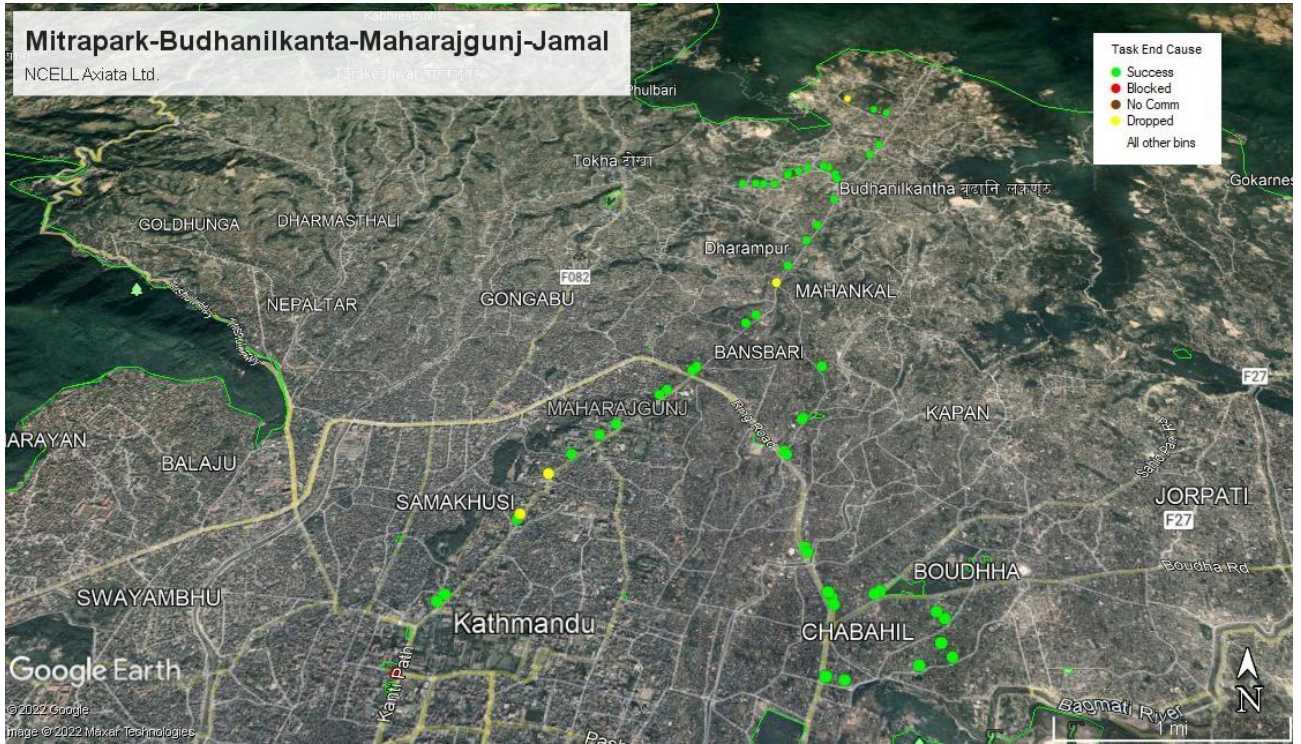
### CALL BLOCK RATE

Call Block Rate			
Attempted Calls	Established Calls	Blocked Calls	Call Block Rate (%)
33	32	1	3.03

### CALL DROP RATE

Call Drop Rate			
Total Attempts	Established Calls	Dropped Calls	Call Drop Rate (%)
33	32	0	0





मोबाईल सेवाप्रदायक : स्मार्ट टेलिकम प्रा. लि.

## CALL TEST REPORT

### OPERATOR INFORMATION

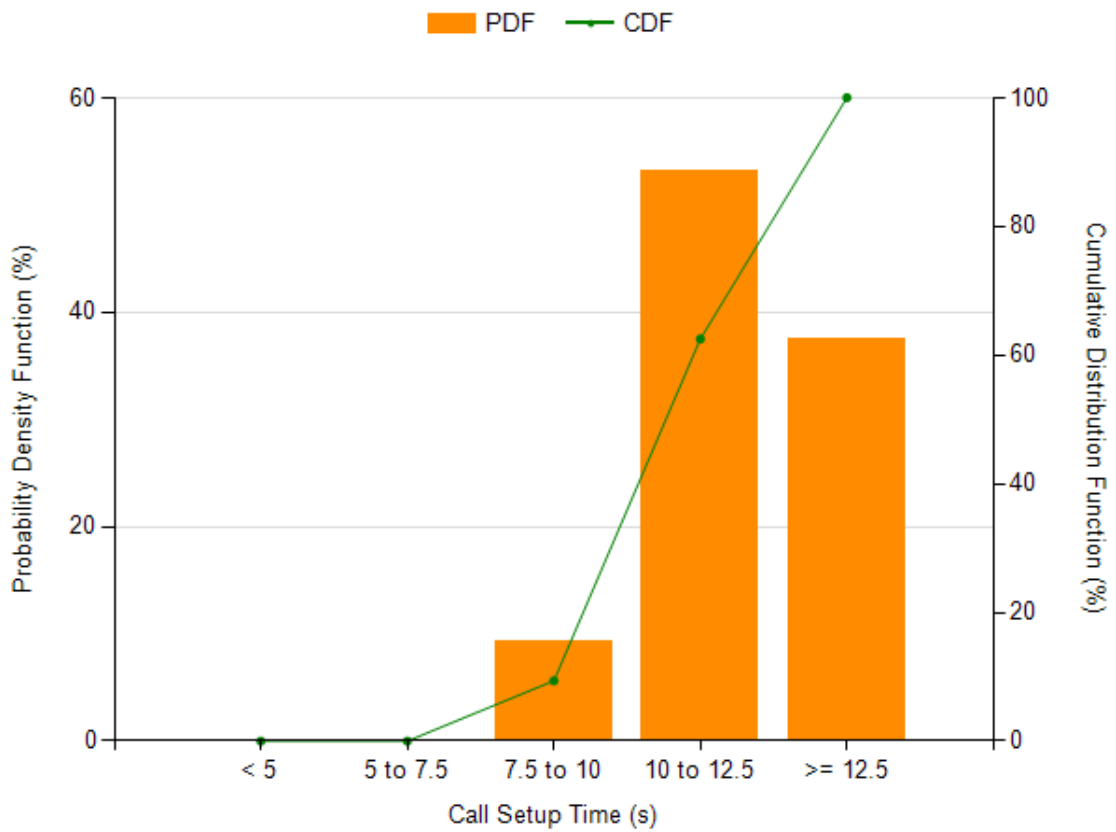
Device Label	Mobile Country Code (MCC)	Mobile Network Code (MNC)
SMART	429	4

### CALL SETUP SUCCESS RATE

Call Setup Success Rate		
Total Attempts	Established Calls	Call Setup Success Rate (%)
37	30	81.08

### CALL SETUP TIME

Call Setup/Connection Time			
Setup Time (s)	Standard Deviation (s)	Minimum (s)	Maximum (s)
12.4	2.4	8.09	17.34

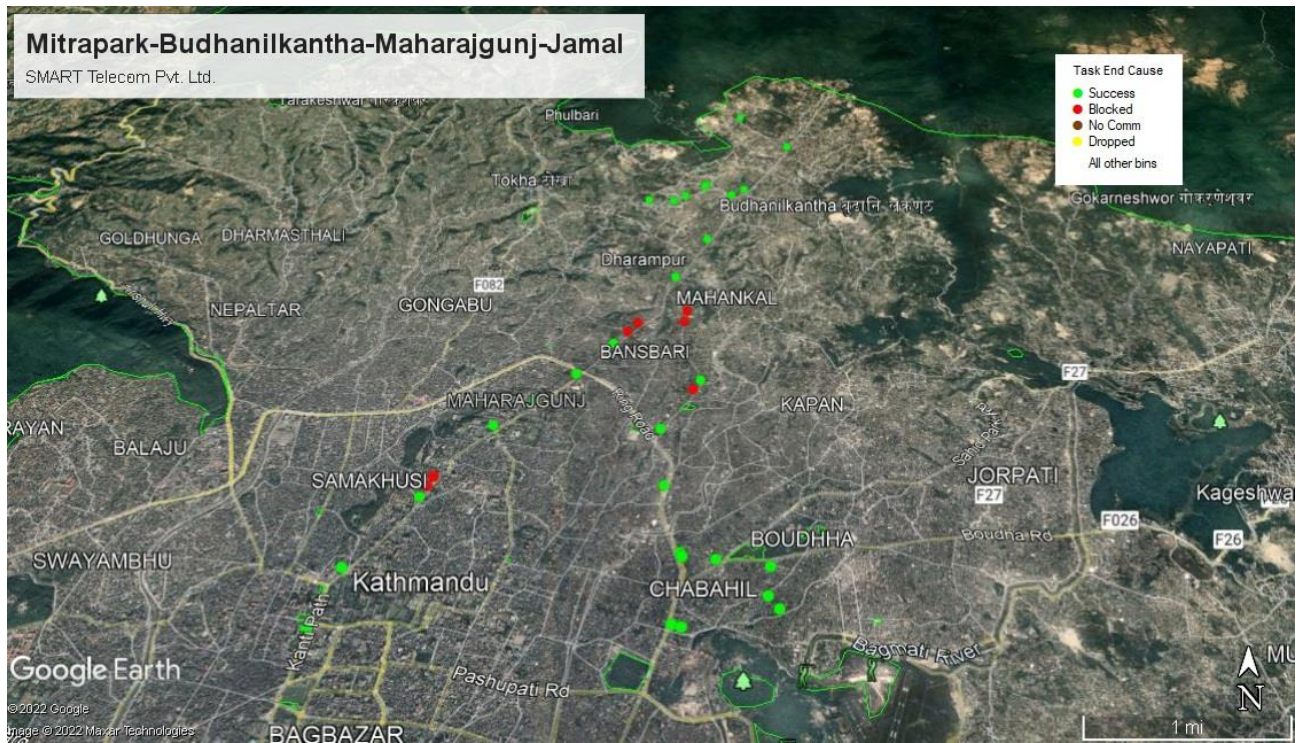


### CALL BLOCK RATE

Call Block Rate			
Attempted Calls	Established Calls	Blocked Calls	Call Block Rate (%)
37	30	7	18.92

### CALL DROP RATE

Call Drop Rate			
Total Attempts	Established Calls	Dropped Calls	Call Drop Rate (%)
37	30	0	0



ड्राइभ टेष्ट गरिएको मिति: २०७८/०९/२१

ड्राइभ टेष्ट गरिएका क्षेत्र : सातदोबाटो , नखिपोट , कुसुन्ती , एकान्तकुना , झमिखेल, सानेपा, कुपण्डोल ,त्रिपुरेश्वर, जमल

मोबाईल सेवाप्रदायक : नेपाल दूरसंचार कम्पनी लि.

## CALL TEST REPORT

### OPERATOR INFORMATION

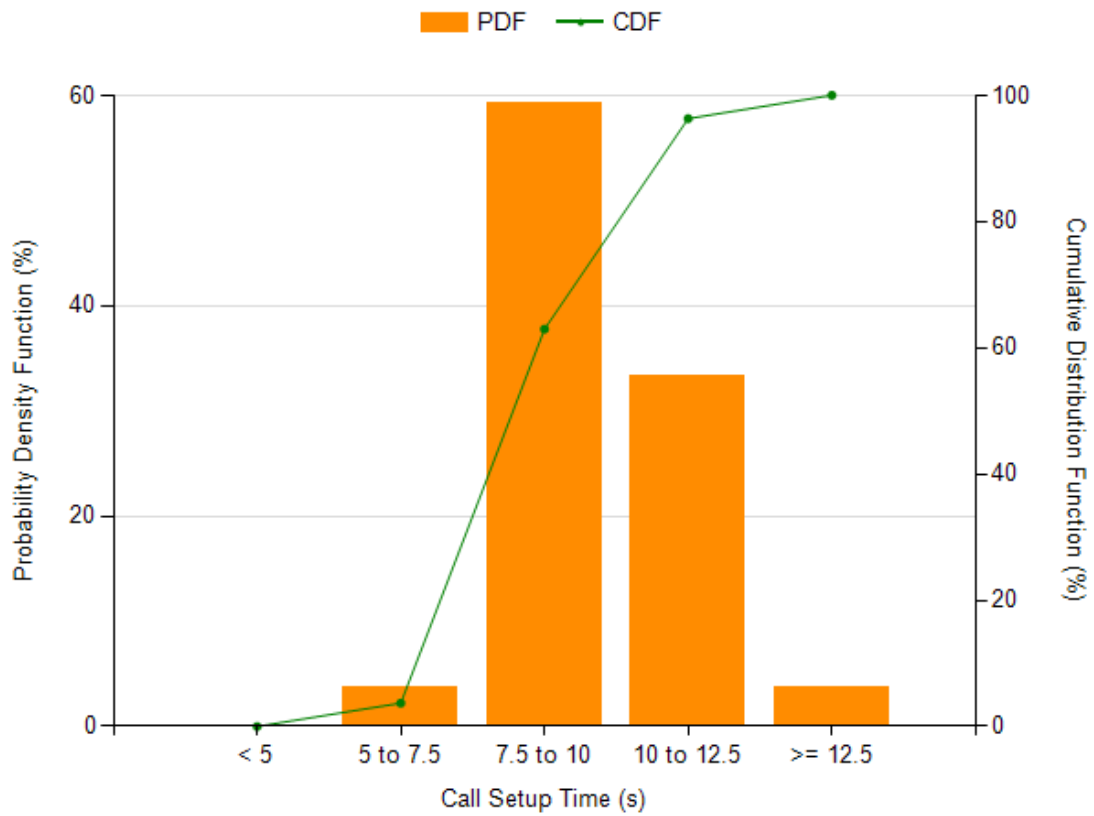
Device Label	Mobile Country Code (MCC)	Mobile Network Code (MNC)
NDCL	429	1

### CALL SETUP SUCCESS RATE

Call Setup Success Rate		
Total Attempts	Established Calls	Call Setup Success Rate (%)
31	24	77.42

### CALL SETUP TIME

Call Setup/Connection Time			
Setup Time (s)	Standard Deviation (s)	Minimum (s)	Maximum (s)
9.59	1.68	6.34	15

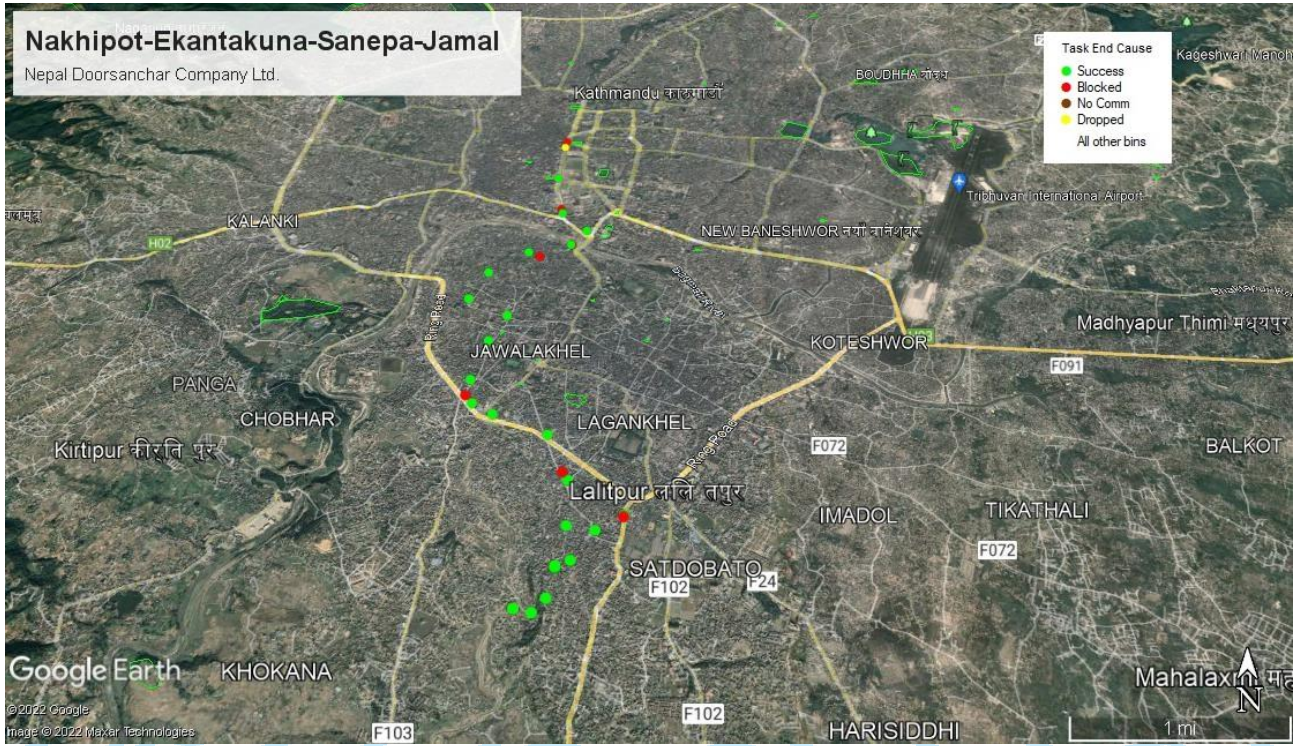


### CALL BLOCK RATE

Call Block Rate			
Attempted Calls	Established Calls	Blocked Calls	Call Block Rate (%)
31	24	7	22.58

### CALL DROP RATE

Call Drop Rate			
Total Attempts	Established Calls	Dropped Calls	Call Drop Rate (%)
31	24	1	4.17



मोबाईल सेवाप्रदायक : एनसेल आजियटा लि.

**CALL TEST REPORT**

**OPERATOR INFORMATION**

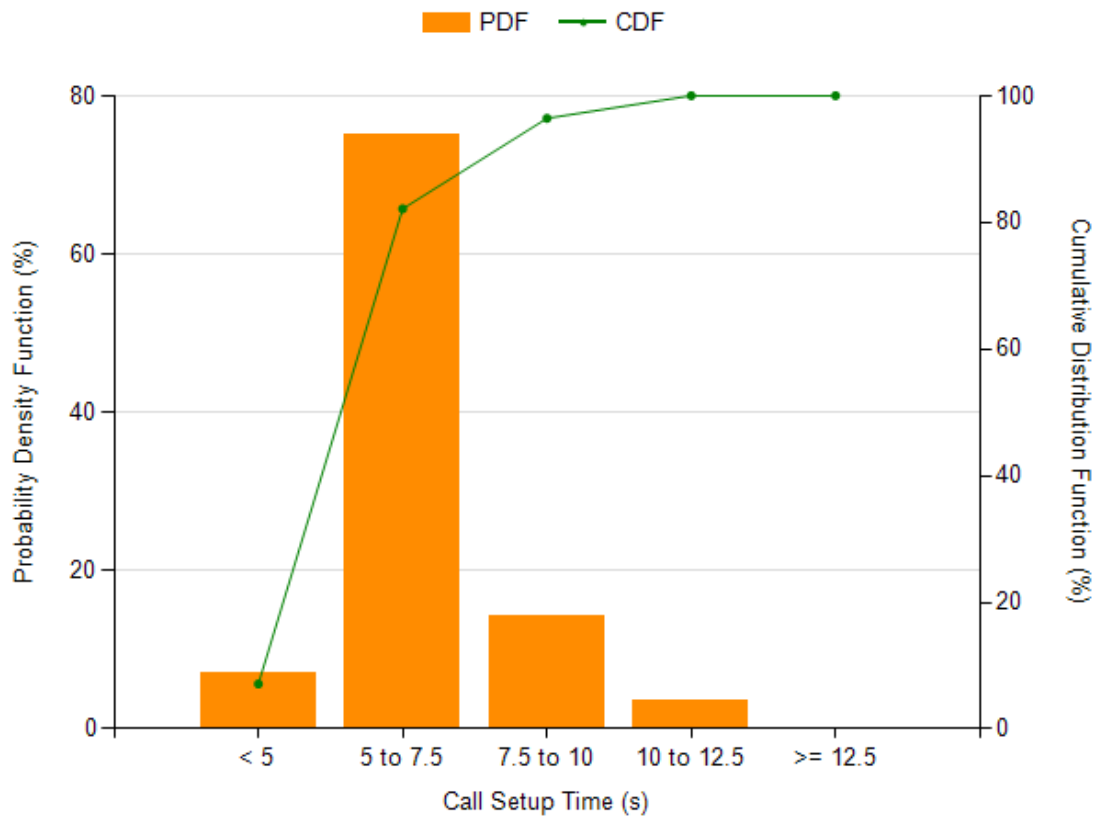
Device Label	Mobile Country Code (MCC)	Mobile Network Code (MNC)
NCELL	429	2

**CALL SETUP SUCCESS RATE**

Call Setup Success Rate		
Total Attempts	Established Calls	Call Setup Success Rate (%)
26	25	96.15

**CALL SETUP TIME**

Call Setup/Connection Time			
Setup Time (s)	Standard Deviation (s)	Minimum (s)	Maximum (s)
6.44	1.46	4.34	10.2

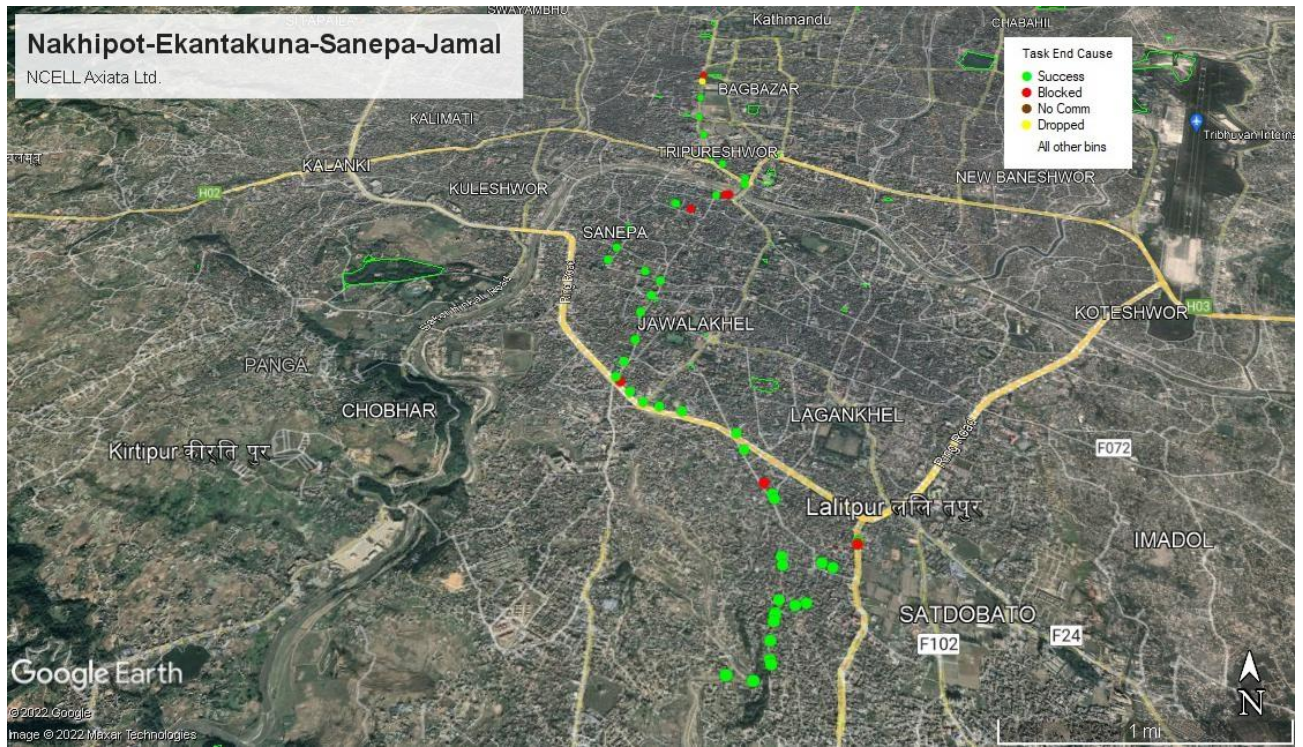


### CALL BLOCK RATE

Call Block Rate			
Attempted Calls	Established Calls	Blocked Calls	Call Block Rate (%)
26	25	1	3.85

### CALL DROP RATE

Call Drop Rate			
Total Attempts	Established Calls	Dropped Calls	Call Drop Rate (%)
26	25	0	0



मोबाईल सेवाप्रदायक : स्मार्ट टेलिकम प्रा. लि.

## CALL TEST REPORT

### OPERATOR INFORMATION

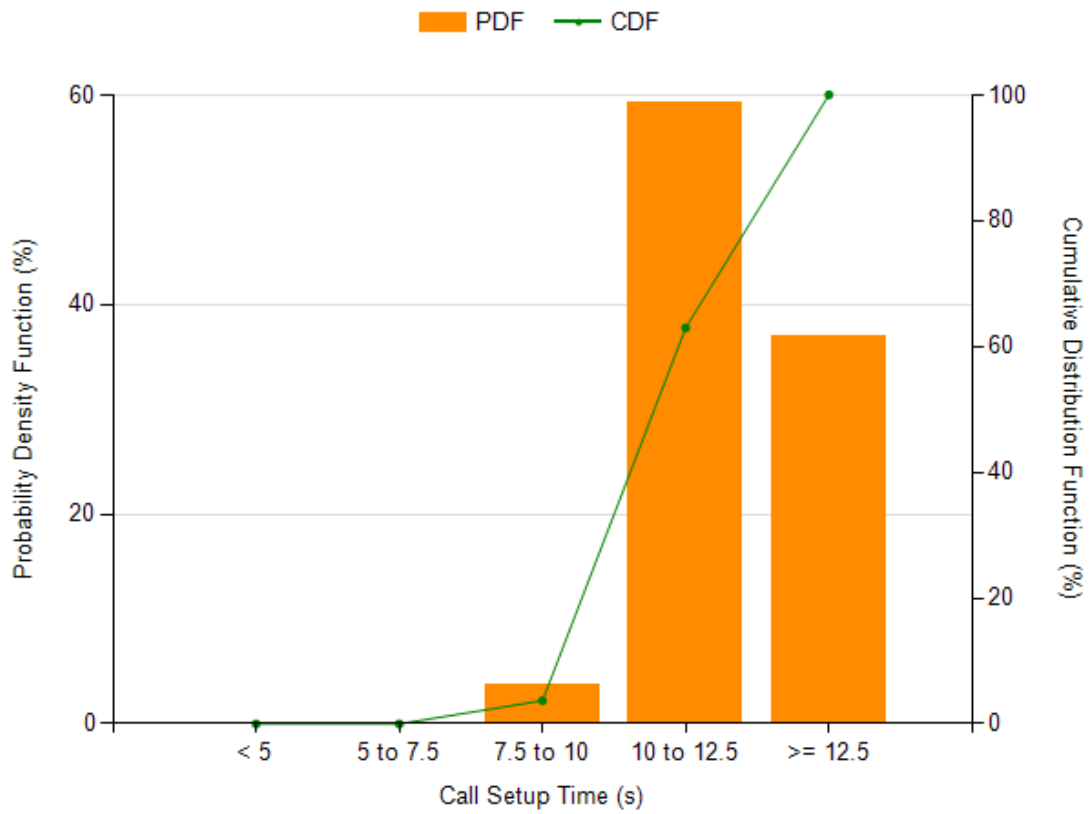
Device Label	Mobile Country Code (MCC)	Mobile Network Code (MNC)
SMART	429	4

### CALL SETUP SUCCESS RATE

Call Setup Success Rate		
Total Attempts	Established Calls	Call Setup Success Rate (%)
29	24	82.76

### CALL SETUP TIME

Call Setup/Connection Time			
Setup Time (s)	Standard Deviation (s)	Minimum (s)	Maximum (s)
12.17	1.52	9.61	15.94



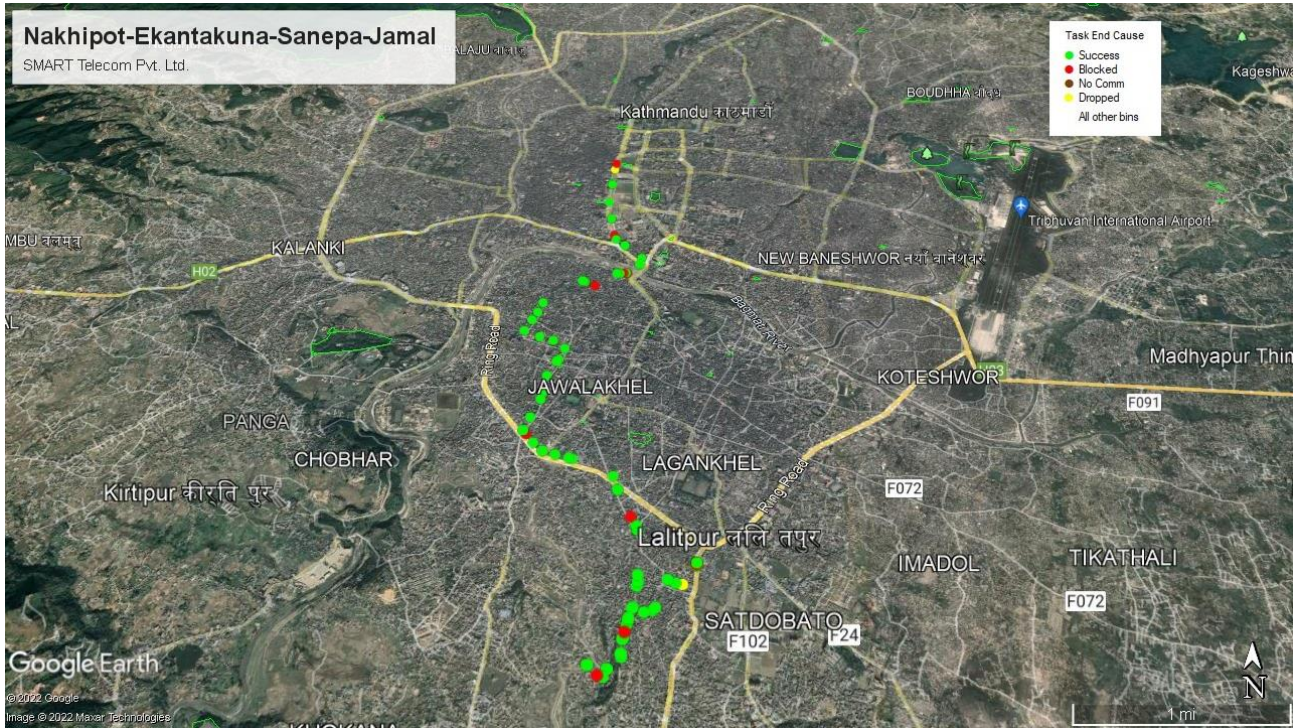
### CALL BLOCK RATE

Call Block Rate			
Attempted Calls	Established Calls	Blocked Calls	Call Block Rate (%)
29	24	5	17.24

### CALL DROP RATE

Call Drop Rate			
Total Attempts	Established Calls	Dropped Calls	Call Drop Rate (%)
29	24	1	4.17





ड्राइभ टेष्ट गरिएको मिति: २०७८/०९/२२

ड्राइभ टेष्ट गरिएका क्षेत्र : कोटेश्वर, पुरानो सिनामंगल , चाबहिल , सुन्दरटोल, बौद्ध , जोरपाटी , थली , कपन , धुम्बाराही

मोबाईल सेवाप्रदायक : नेपाल दूरसंचार कम्पनी लि.

### CALL TEST REPORT

#### OPERATOR INFORMATION

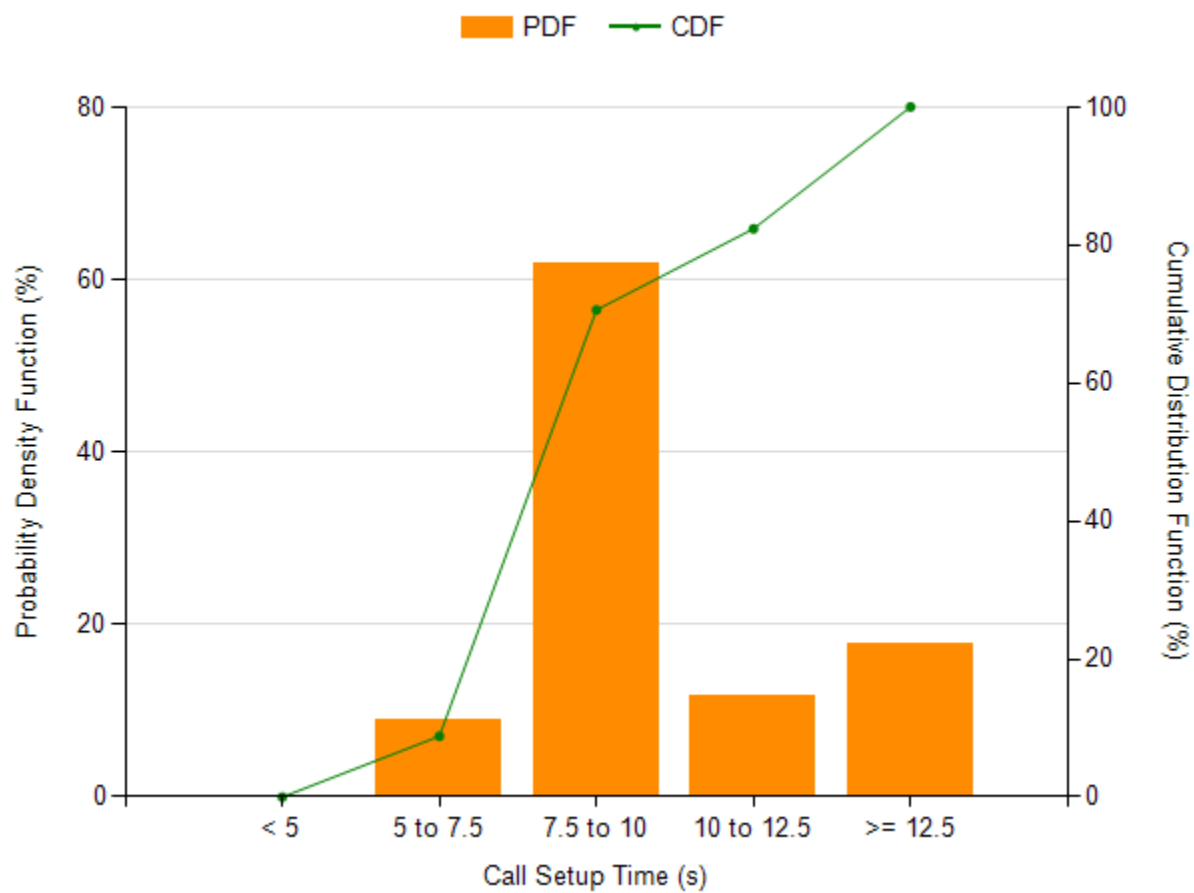
Device Label	Mobile Country Code (MCC)	Mobile Network Code (MNC)
NDCL	429	1

#### CALL SETUP SUCCESS RATE

Call Setup Success Rate		
Total Attempts	Established Calls	Call Setup Success Rate (%)
37	31	83.78

#### CALL SETUP TIME

Call Setup/Connection Time			
Setup Time (s)	Standard Deviation (s)	Minimum (s)	Maximum (s)
9.66	2.37	6.83	15.6

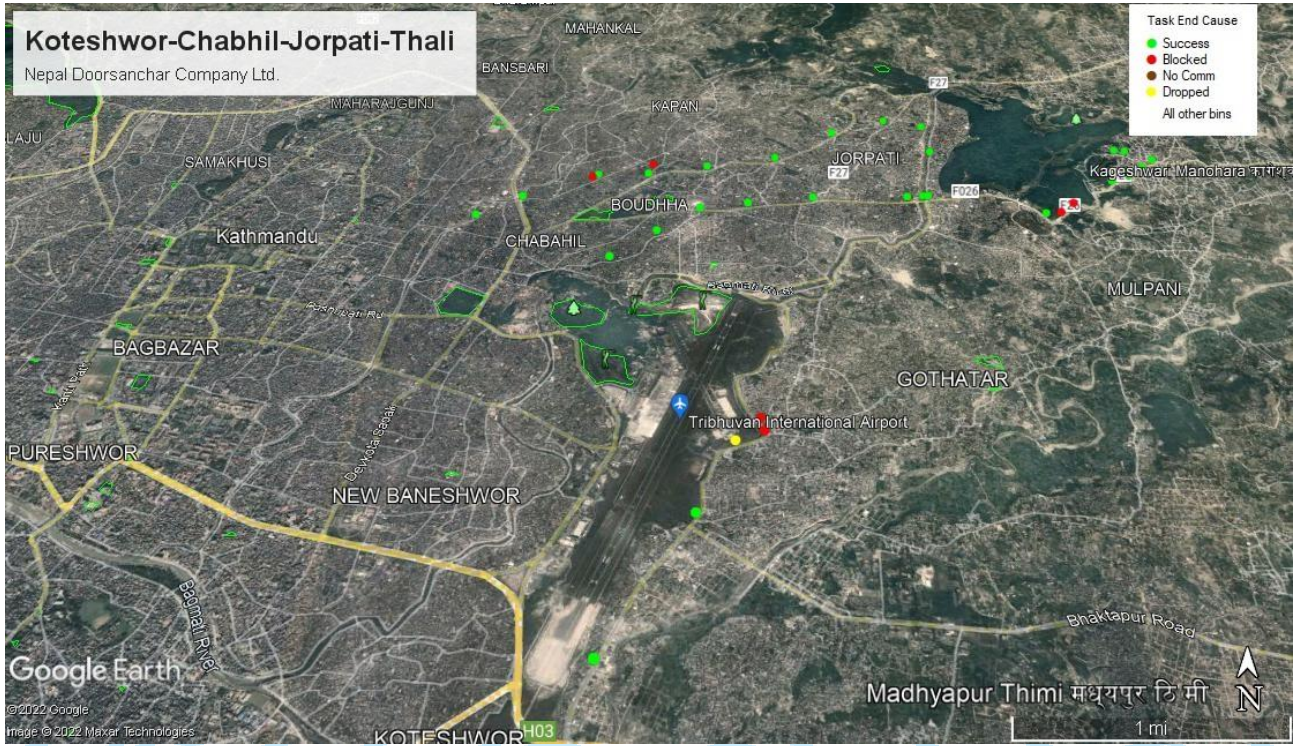


### CALL BLOCK RATE

Call Block Rate			
Attempted Calls	Established Calls	Blocked Calls	Call Block Rate (%)
37	31	6	16.22

### CALL DROP RATE

Call Drop Rate			
Total Attempts	Established Calls	Dropped Calls	Call Drop Rate (%)
37	31	1	3.23



मोबाईल सेवाप्रदायक : एनसेल अजियटा लि.

## CALL TEST REPORT

### OPERATOR INFORMATION

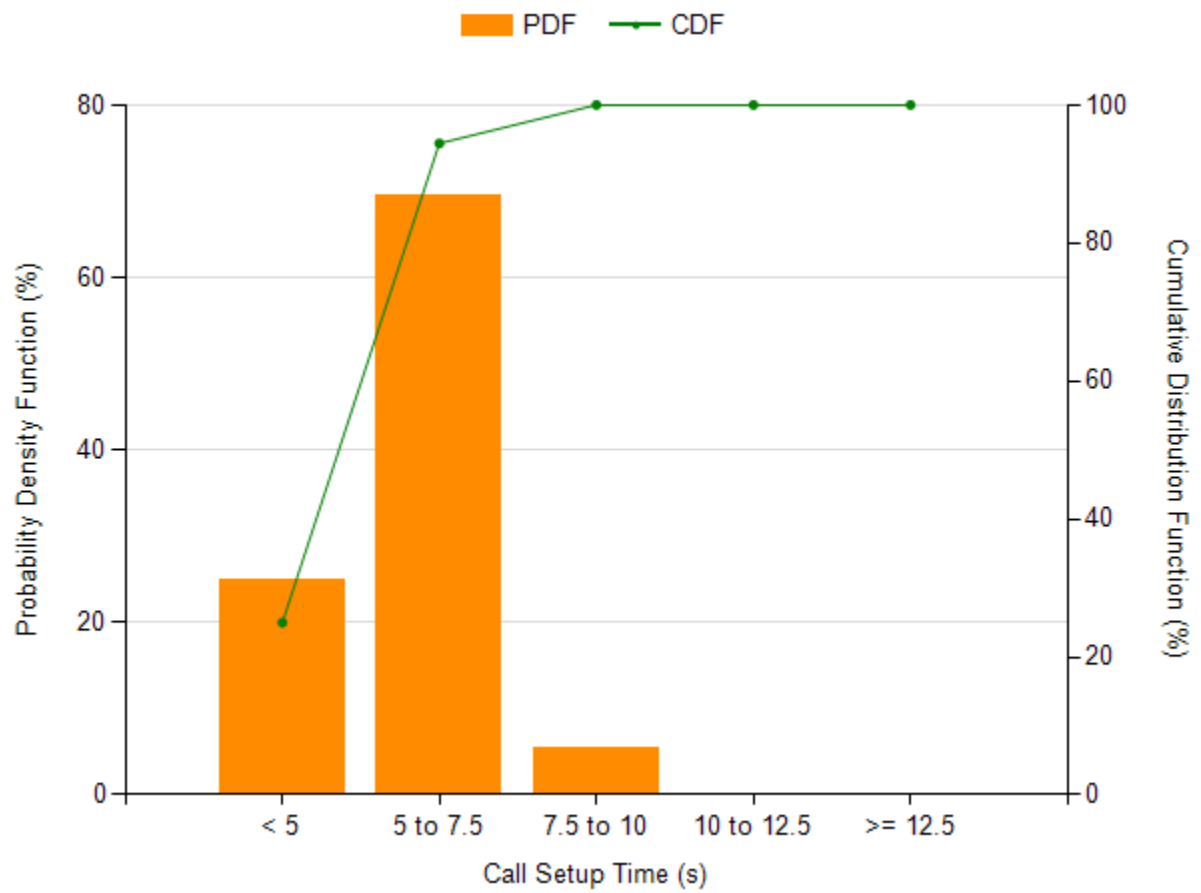
Device Label	Mobile Country Code (MCC)	Mobile Network Code (MNC)
NCELL	429	2

### CALL SETUP SUCCESS RATE

Call Setup Success Rate		
Total Attempts	Established Calls	Call Setup Success Rate (%)
38	34	89.47

### CALL SETUP TIME

Call Setup/Connection Time			
Setup Time (s)	Standard Deviation (s)	Minimum (s)	Maximum (s)
5.72	1.04	3.69	8.61

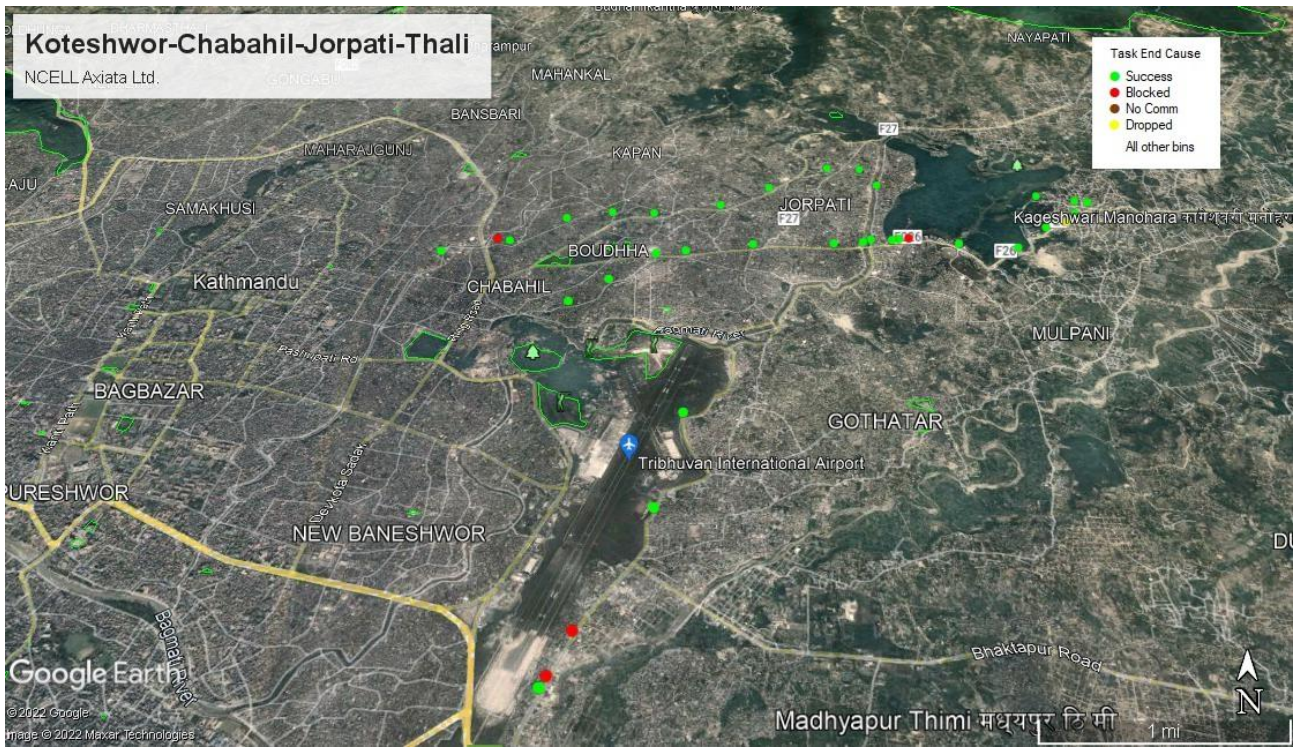


### CALL BLOCK RATE

Call Block Rate			
Attempted Calls	Established Calls	Blocked Calls	Call Block Rate (%)
38	34	4	10.53

### CALL DROP RATE

Call Drop Rate			
Total Attempts	Established Calls	Dropped Calls	Call Drop Rate (%)
38	34	1	2.94



मोबाईल सेवाप्रदायक : स्मार्ट टेलिकम प्रा. लि.

## CALL TEST REPORT

### OPERATOR INFORMATION

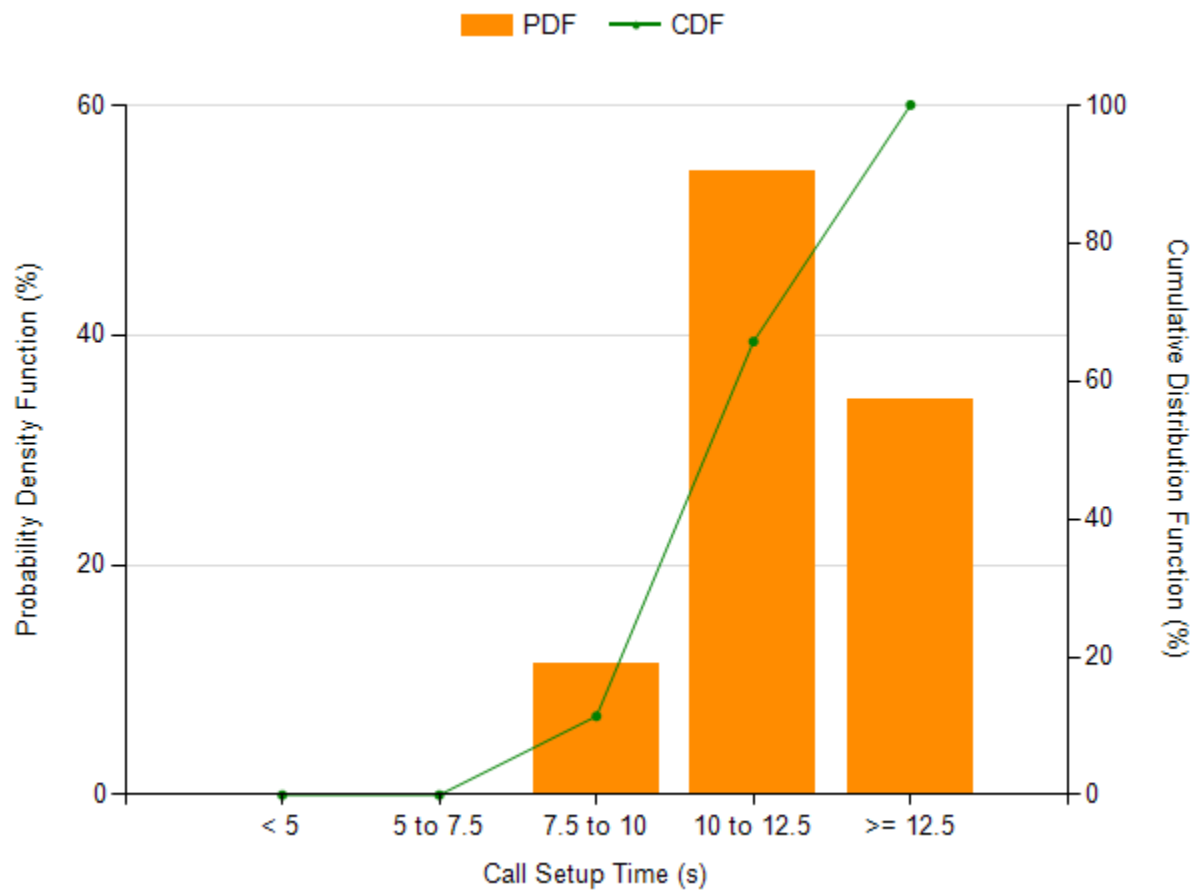
Device Label	Mobile Country Code (MCC)	Mobile Network Code (MNC)
SMART	429	4

### CALL SETUP SUCCESS RATE

Call Setup Success Rate		
Total Attempts	Established Calls	Call Setup Success Rate (%)
39	33	84.62

### CALL SETUP TIME

Call Setup/Connection Time			
Setup Time (s)	Standard Deviation (s)	Minimum (s)	Maximum (s)
12.38	2.39	9.02	17.85

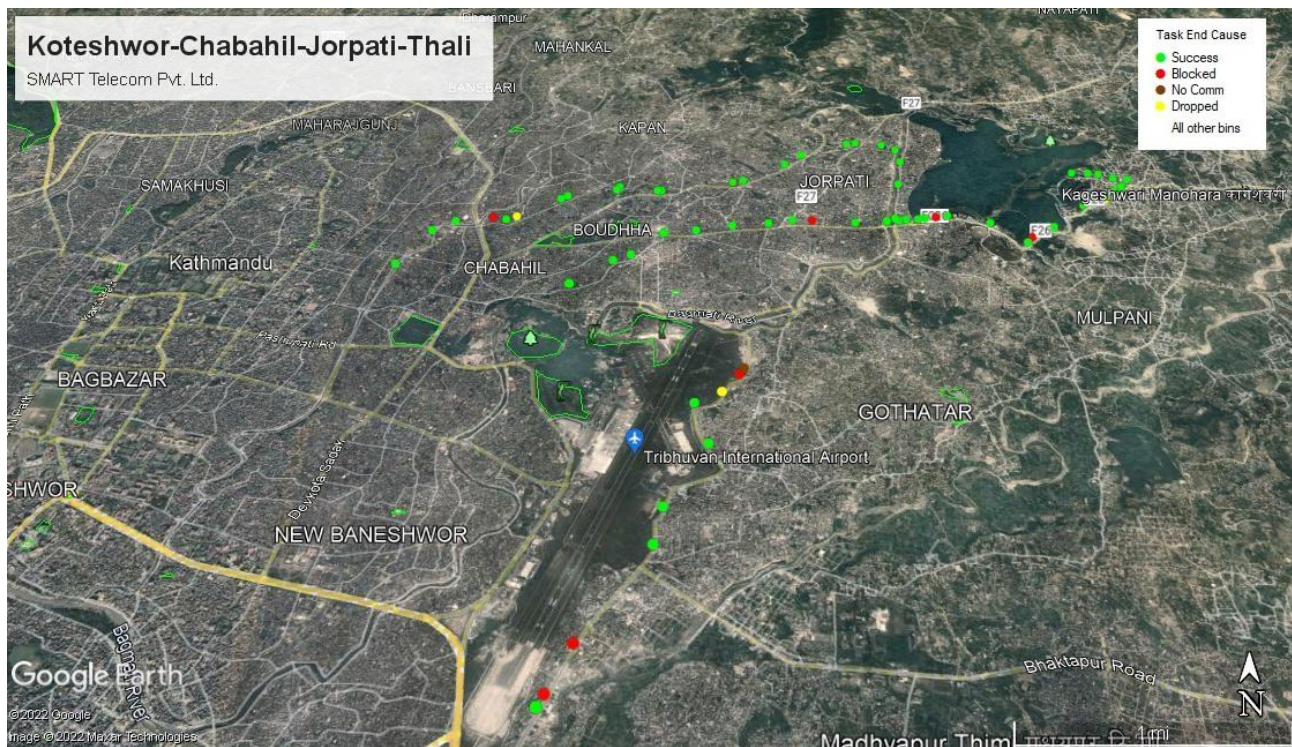


### CALL BLOCK RATE

Call Block Rate			
Attempted Calls	Established Calls	Blocked Calls	Call Block Rate (%)
39	33	6	15.38

### CALL DROP RATE

Call Drop Rate			
Total Attempts	Established Calls	Dropped Calls	Call Drop Rate (%)
39	33	2	6.06



ड्राइभ टेष्ट गरिएको मिति: २०७८/०९/२३

ड्राइभ टेष्ट गरिएका क्षेत्र : बुंगमती, च्यासीकोट, भैसेपाटी, नक्खु, एकान्तकुना, जावलाखेल, कुपण्डोल, त्रिपुरेश्वर, जमल

मोबाईल सेवाप्रदायक : नेपाल दूरसंचार कम्पनी लि.

## CALL TEST REPORT

### OPERATOR INFORMATION

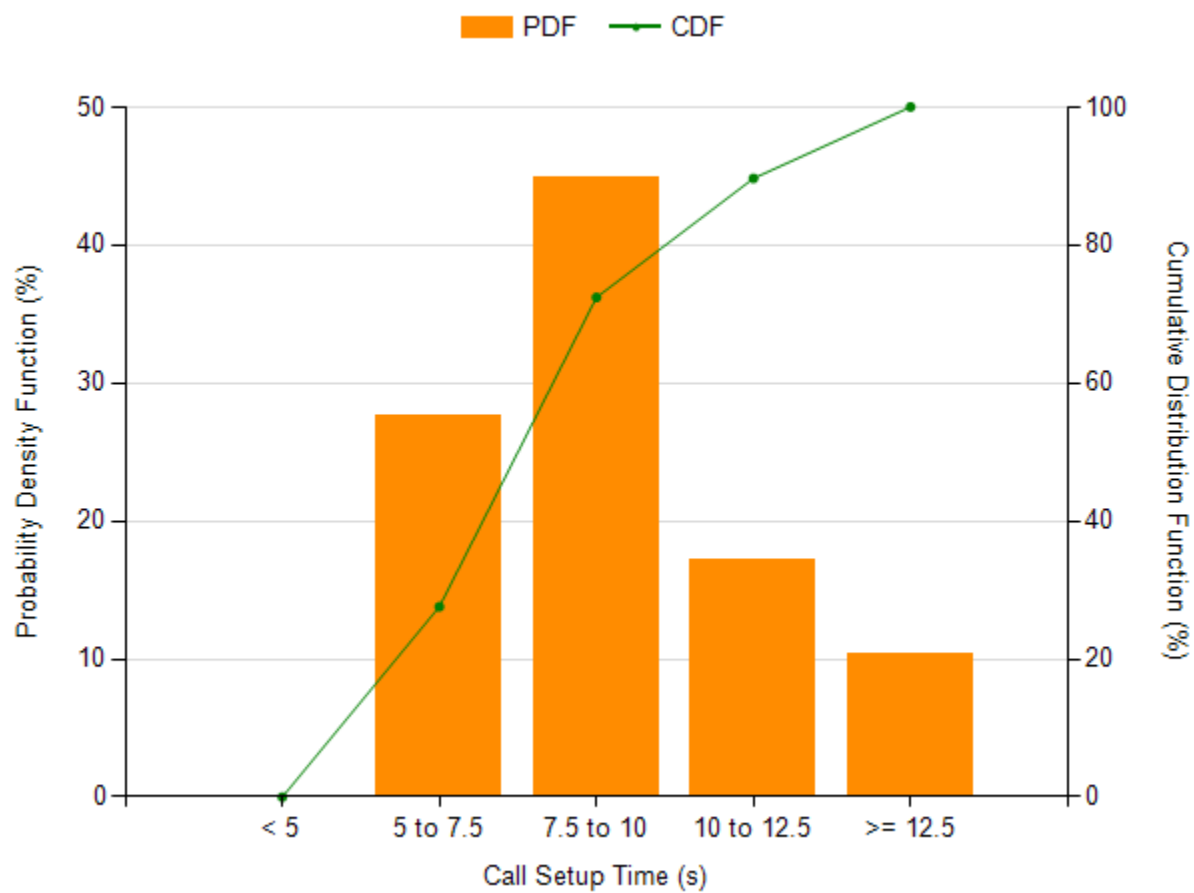
Device Label	Mobile Country Code (MCC)	Mobile Network Code (MNC)
NDCL	429	1

### CALL SETUP SUCCESS RATE

Call Setup Success Rate		
Total Attempts	Established Calls	Call Setup Success Rate (%)
27	27	100

### CALL SETUP TIME

Call Setup/Connection Time			
Setup Time (s)	Standard Deviation (s)	Minimum (s)	Maximum (s)
8.98	2.42	5.75	15.53



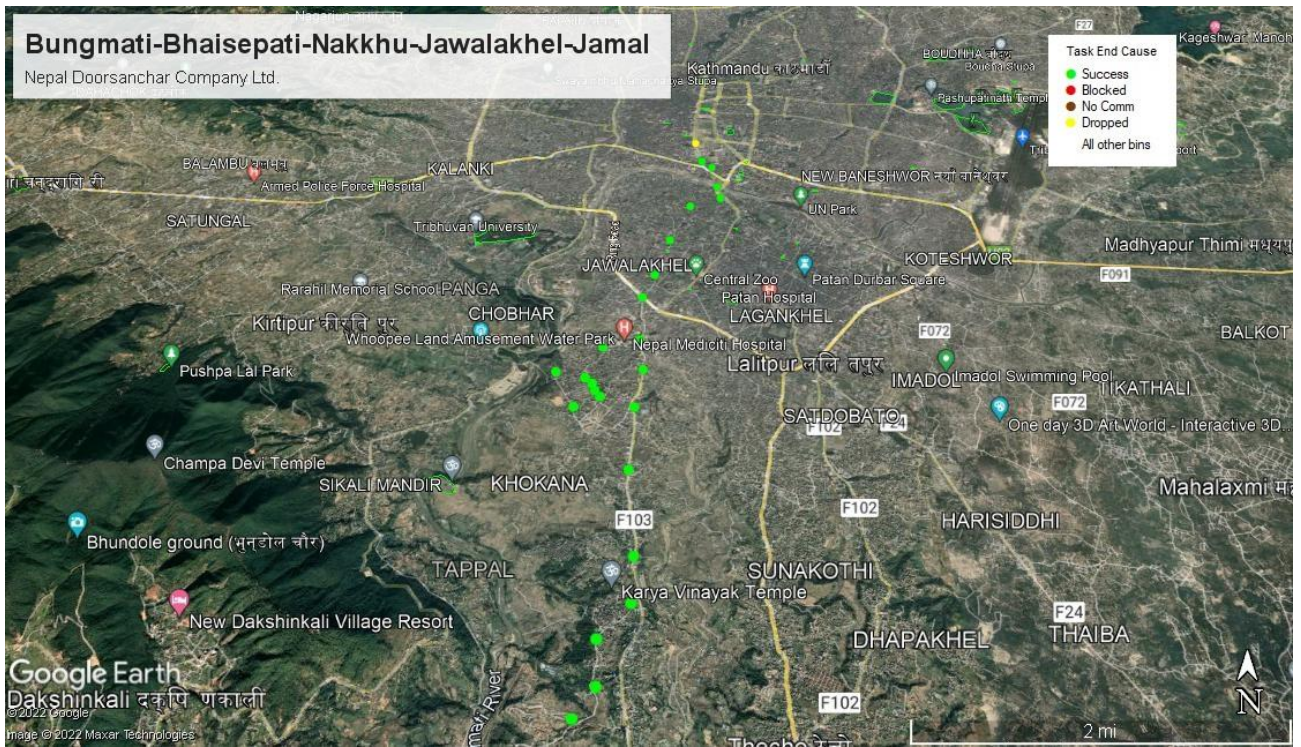
### CALL BLOCK RATE

Call Block Rate			
Attempted Calls	Established Calls	Blocked Calls	Call Block Rate (%)
27	27	0	0

### CALL DROP RATE

Call Drop Rate			
Total Attempts	Established Calls	Dropped Calls	Call Drop Rate (%)
27	27	1	3.7





मोबाईल सेवाप्रदायक : एनसेल आजियटा लि.

## CALL TEST REPORT

### OPERATOR INFORMATION

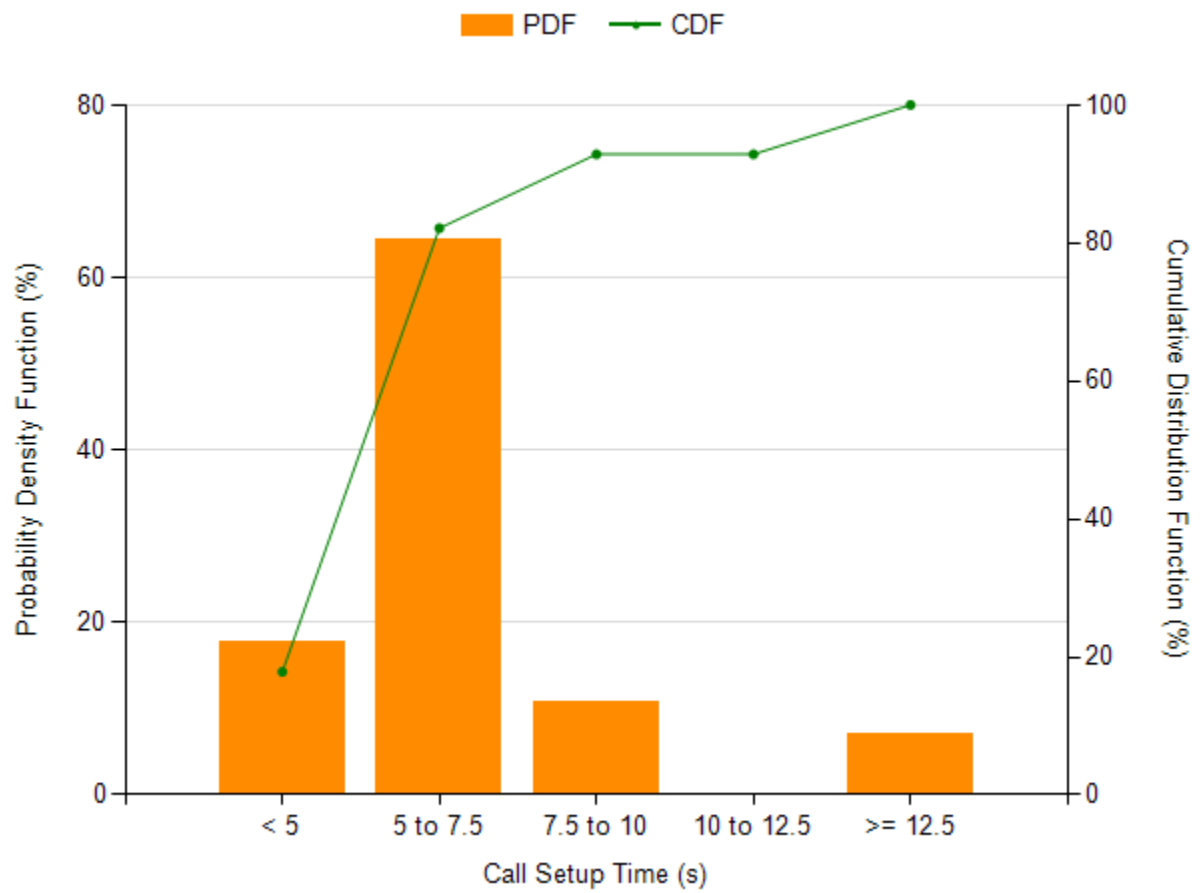
Device Label	Mobile Country Code (MCC)	Mobile Network Code (MNC)
NCELL	429	2

### CALL SETUP SUCCESS RATE

Call Setup Success Rate		
Total Attempts	Established Calls	Call Setup Success Rate (%)
29	27	93.1

### CALL SETUP TIME

Call Setup/Connection Time			
Setup Time (s)	Standard Deviation (s)	Minimum (s)	Maximum (s)
6.41	2.36	4.39	14.49

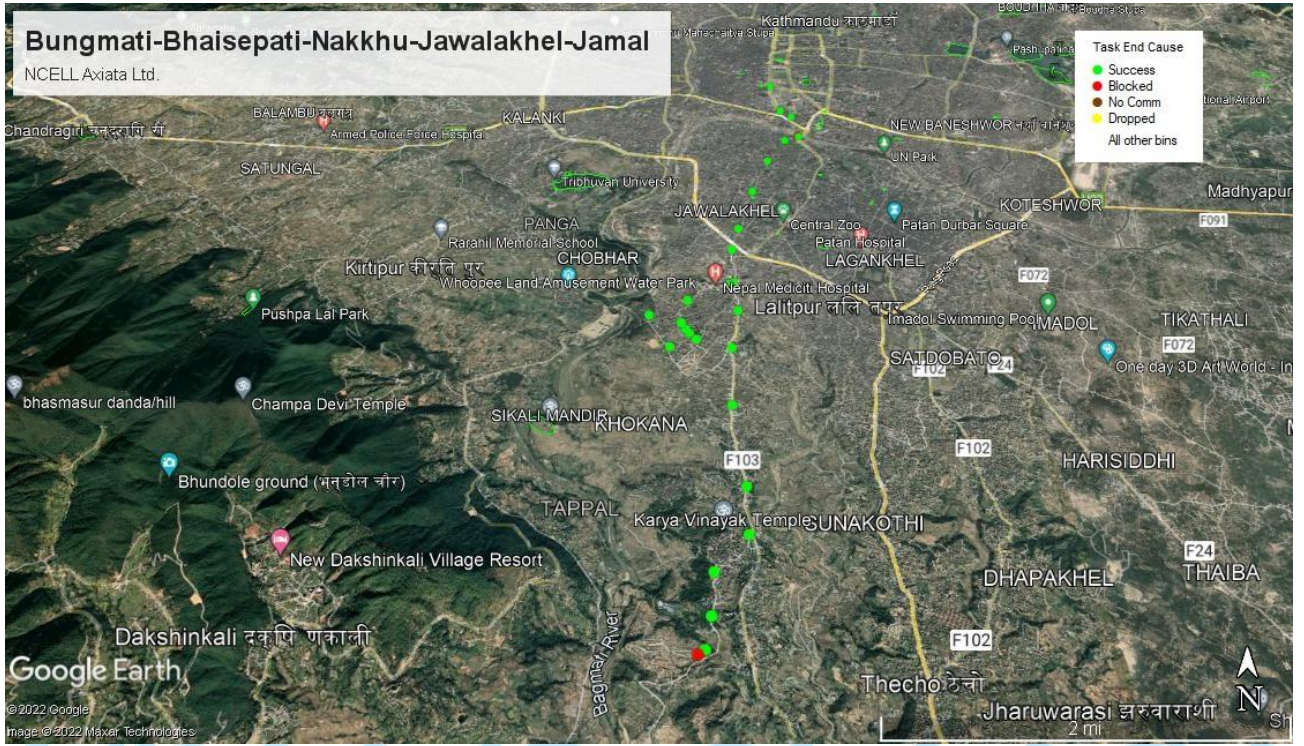


### CALL BLOCK RATE

Call Block Rate			
Attempted Calls	Established Calls	Blocked Calls	Call Block Rate (%)
29	27	2	6.9

### CALL DROP RATE

Call Drop Rate			
Total Attempts	Established Calls	Dropped Calls	Call Drop Rate (%)
29	27	0	0



मोबाईल सेवाप्रदायक : स्मार्ट टेलिकम प्रा. लि.

## CALL TEST REPORT

### OPERATOR INFORMATION

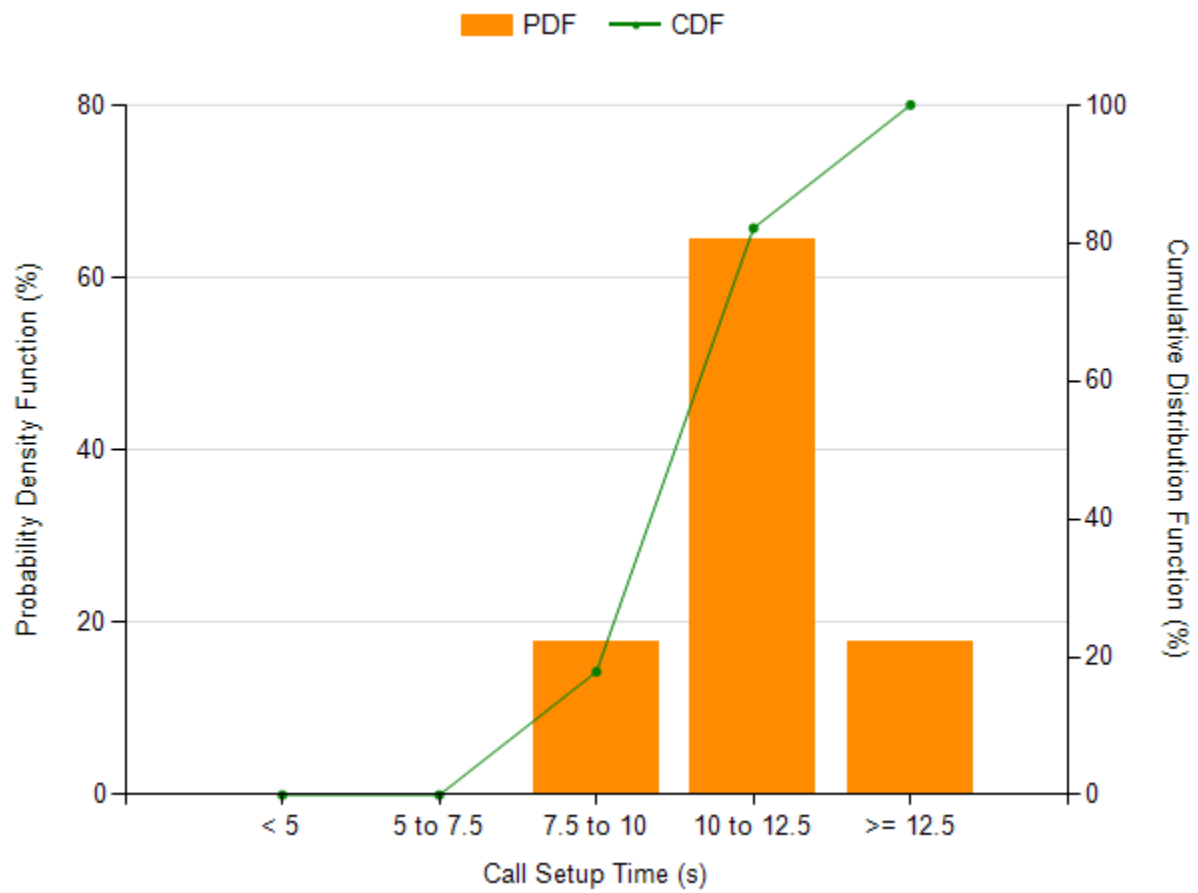
Device Label	Mobile Country Code (MCC)	Mobile Network Code (MNC)
SMART	429	4

### CALL SETUP SUCCESS RATE

Call Setup Success Rate		
Total Attempts	Established Calls	Call Setup Success Rate (%)
28	26	92.86

### CALL SETUP TIME

Call Setup/Connection Time			
Setup Time (s)	Standard Deviation (s)	Minimum (s)	Maximum (s)
11.36	1.69	9.47	15.69



### CALL BLOCK RATE

Call Block Rate			
Attempted Calls	Established Calls	Blocked Calls	Call Block Rate (%)
28	26	2	7.14

### CALL DROP RATE

Call Drop Rate			
Total Attempts	Established Calls	Dropped Calls	Call Drop Rate (%)
28	26	2	7.69



ड्राइभ टेष्ट गरिएको मिति: २०७८/०९/२५

ड्राइभ टेष्ट गरिएका क्षेत्र : सिंहदरबार, नयाँ बानेश्वर, मिलनचोक, भीमसेनगोला, गौशाला, गौरीघाट, पुरानो सिनामंगल, पेप्सीकोला, कोटेश्वर, ग्वाकोँ

मोबाईल सेवाप्रदायक : नेपाल दूरसंचार कम्पनी लि.

## CALL TEST REPORT

### OPERATOR INFORMATION

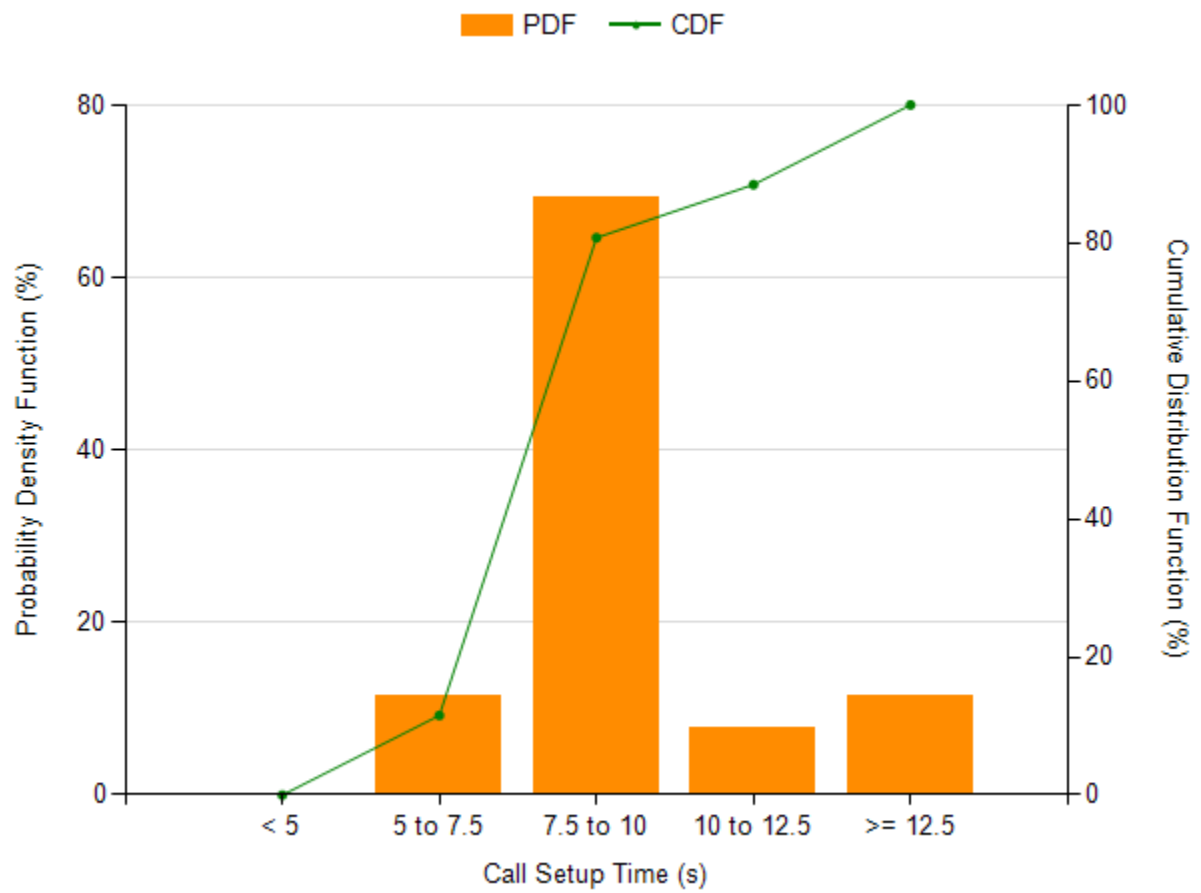
Device Label	Mobile Country Code (MCC)	Mobile Network Code (MNC)
NDCL	429	1

### CALL SETUP SUCCESS RATE

Call Setup Success Rate		
Total Attempts	Established Calls	Call Setup Success Rate (%)
29	25	86.21

### CALL SETUP TIME

Call Setup/Connection Time			
Setup Time (s)	Standard Deviation (s)	Minimum (s)	Maximum (s)
9.5	2.36	6.99	16.45



### CALL BLOCK RATE

Call Block Rate			
Attempted Calls	Established Calls	Blocked Calls	Call Block Rate (%)
29	25	4	13.79

### CALL DROP RATE

Call Drop Rate			
Total Attempts	Established Calls	Dropped Calls	Call Drop Rate (%)
29	25	0	0



मोबाईल सेवाप्रदायक : एनसेल अजियटा लि.

**CALL TEST REPORT**

**OPERATOR INFORMATION**

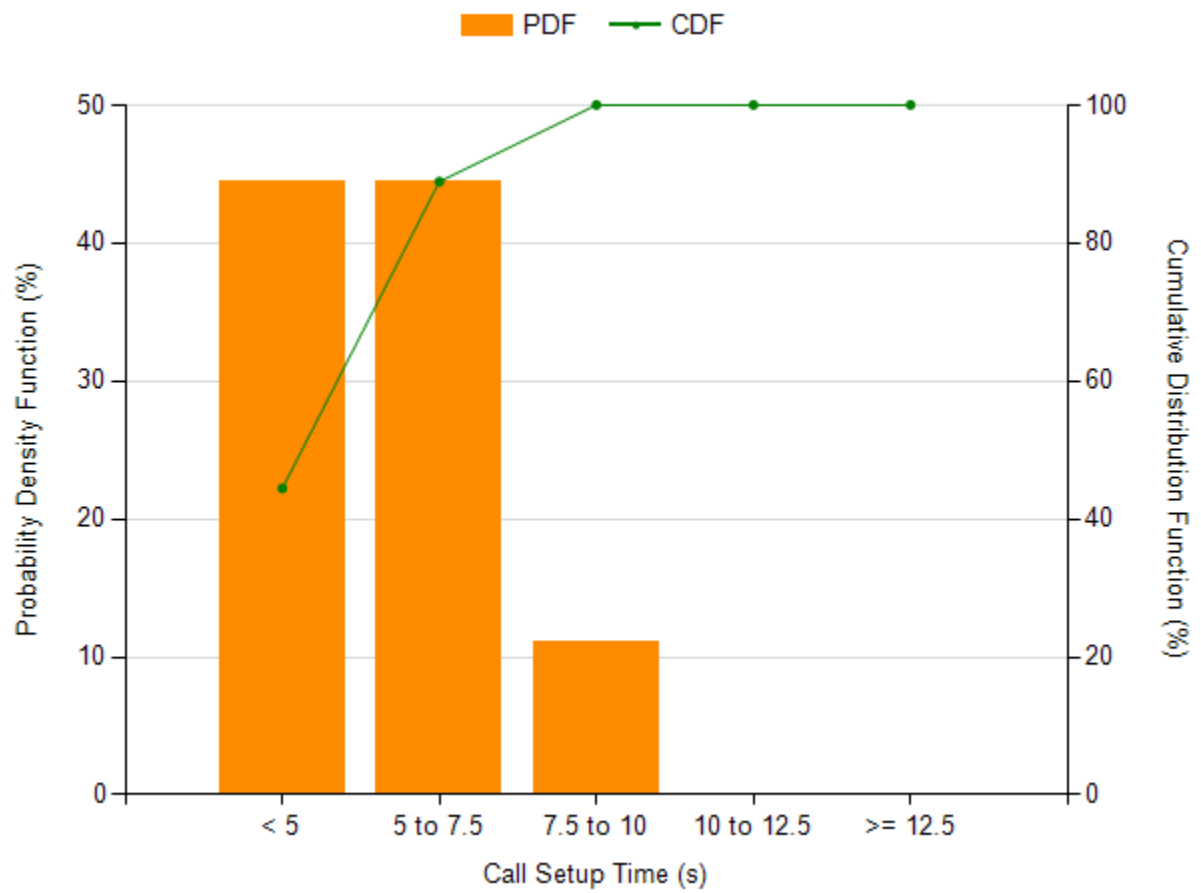
Device Label	Mobile Country Code (MCC)	Mobile Network Code (MNC)
NCELL	429	2

**CALL SETUP SUCCESS RATE**

Call Setup Success Rate		
Total Attempts	Established Calls	Call Setup Success Rate (%)
31	25	80.65

**CALL SETUP TIME**

Call Setup/Connection Time			
Setup Time (s)	Standard Deviation (s)	Minimum (s)	Maximum (s)
5.57	1.48	3.91	9.59



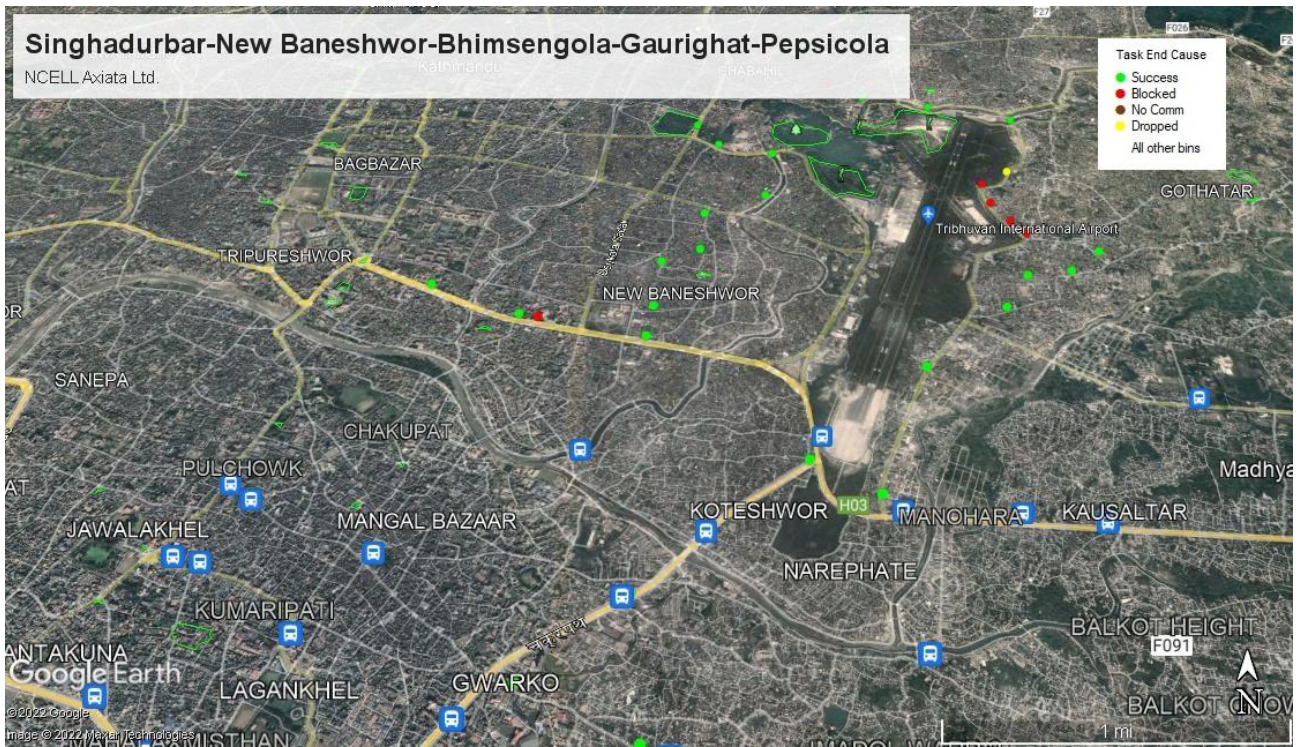
### CALL BLOCK RATE

Call Block Rate			
Attempted Calls	Established Calls	Blocked Calls	Call Block Rate (%)
31	25	6	19.35

### CALL DROP RATE

Call Drop Rate			
Total Attempts	Established Calls	Dropped Calls	Call Drop Rate (%)
31	25	1	4





मोबाईल सेवाप्रदायक : स्मार्ट टेलिकम प्रा. लि.

## CALL TEST REPORT

### OPERATOR INFORMATION

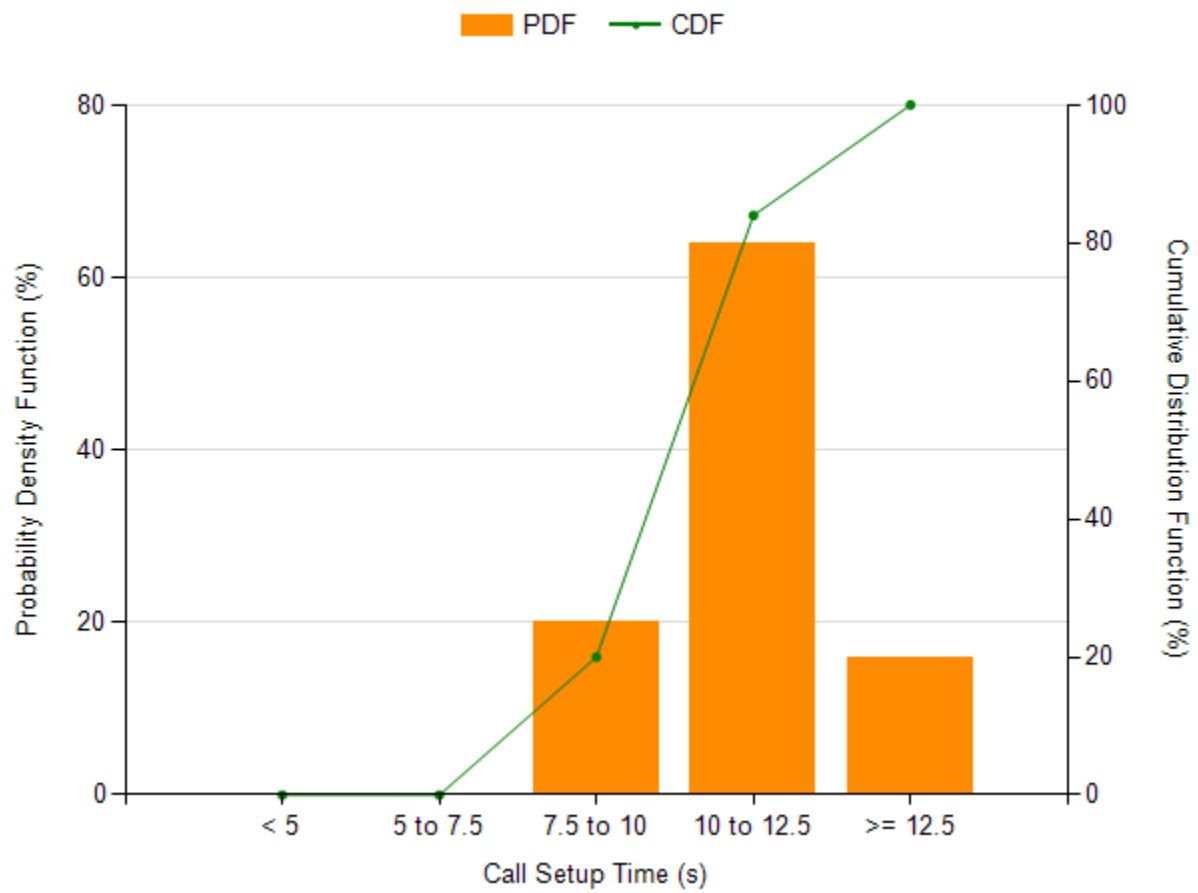
Device Label	Mobile Country Code (MCC)	Mobile Network Code (MNC)
SMART	429	4

### CALL SETUP SUCCESS RATE

Call Setup Success Rate		
Total Attempts	Established Calls	Call Setup Success Rate (%)
29	24	82.76

### CALL SETUP TIME

Call Setup/Connection Time			
Setup Time (s)	Standard Deviation (s)	Minimum (s)	Maximum (s)
11.67	2.26	8.19	17.62

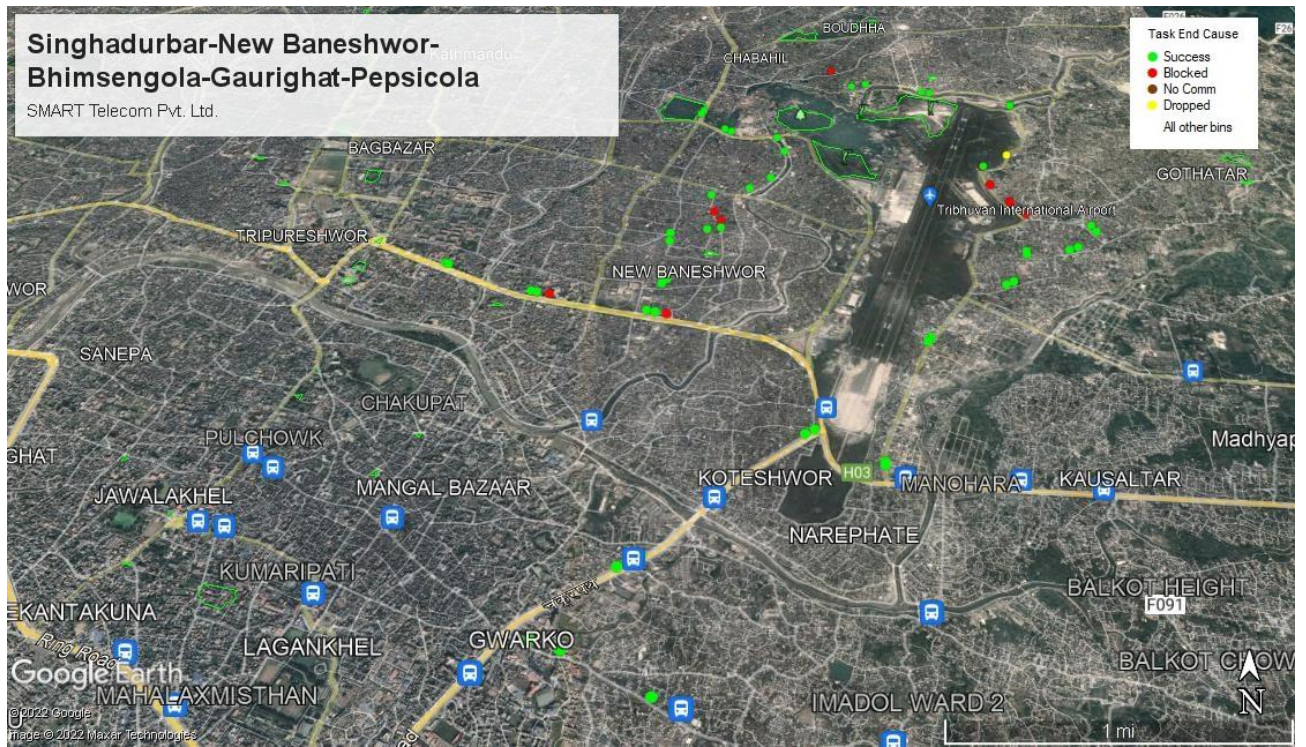


### CALL BLOCK RATE

Call Block Rate			
Attempted Calls	Established Calls	Blocked Calls	Call Block Rate (%)
29	24	5	17.24

### CALL DROP RATE

Call Drop Rate			
Total Attempts	Established Calls	Dropped Calls	Call Drop Rate (%)
29	24	1	4.17



ड्राइभ टेष्ट गरिएको मिति: २०७८/०९/२६

ड्राइभ टेष्ट गरिएका क्षेत्र : सितापाईला, रामकोट , कलंकी

मोबाईल सेवाप्रदायक : नेपाल दूरसंचार कम्पनी लि.

## CALL TEST REPORT

### OPERATOR INFORMATION

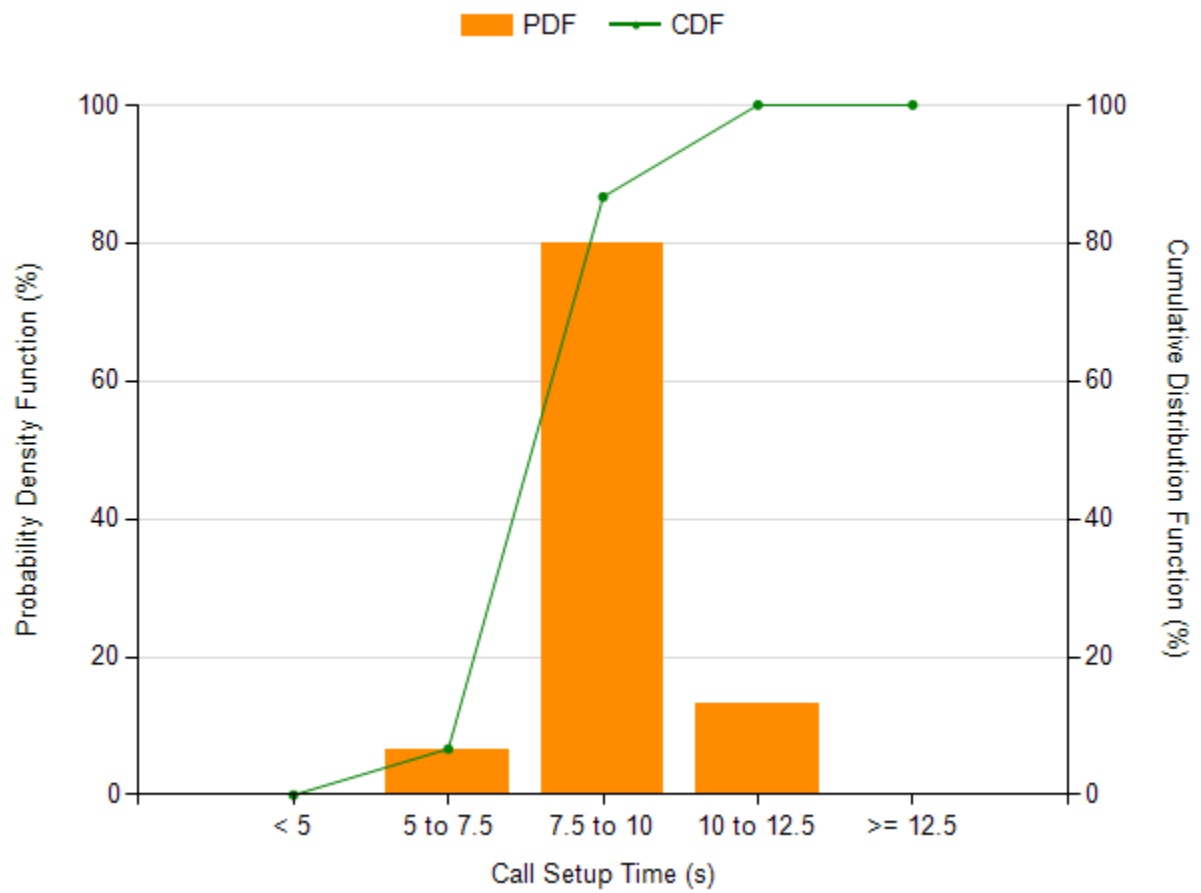
Device Label	Mobile Country Code (MCC)	Mobile Network Code (MNC)
NDCL	429	1

### CALL SETUP SUCCESS RATE

Call Setup Success Rate		
Total Attempts	Established Calls	Call Setup Success Rate (%)
14	13	92.86

### CALL SETUP TIME

Call Setup/Connection Time			
Setup Time (s)	Standard Deviation (s)	Minimum (s)	Maximum (s)
8.7	0.96	7.28	10.53

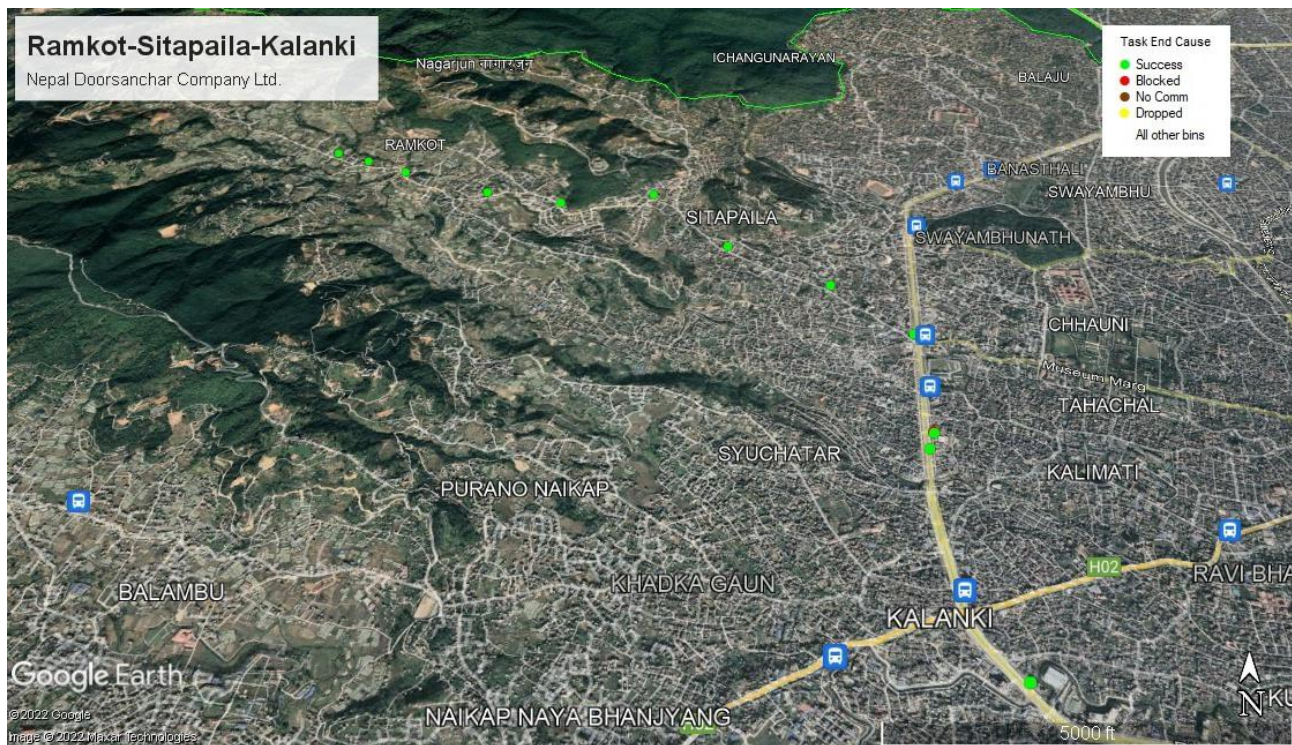


### CALL BLOCK RATE

Call Block Rate			
Attempted Calls	Established Calls	Blocked Calls	Call Block Rate (%)
14	13	1	7.14

### CALL DROP RATE

Call Drop Rate			
Total Attempts	Established Calls	Dropped Calls	Call Drop Rate (%)
14	13	0	0



मोबाईल सेवाप्रदायक : एनसेल अजियटा लि.

## CALL TEST REPORT

### OPERATOR INFORMATION

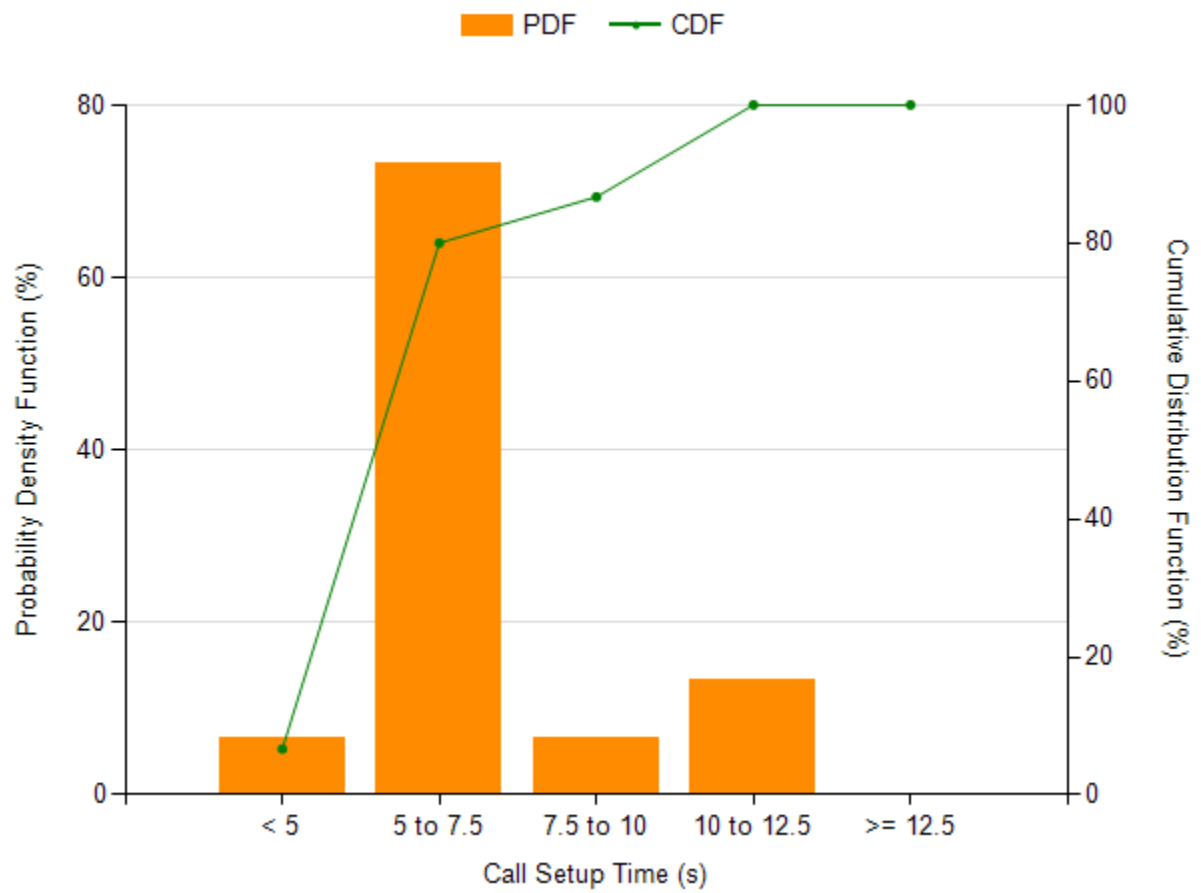
Device Label	Mobile Country Code (MCC)	Mobile Network Code (MNC)
NCELL	429	2

### CALL SETUP SUCCESS RATE

Call Setup Success Rate		
Total Attempts	Established Calls	Call Setup Success Rate (%)
15	13	86.67

### CALL SETUP TIME

Call Setup/Connection Time			
Setup Time (s)	Standard Deviation (s)	Minimum (s)	Maximum (s)
6.8	2.04	4.58	11.22

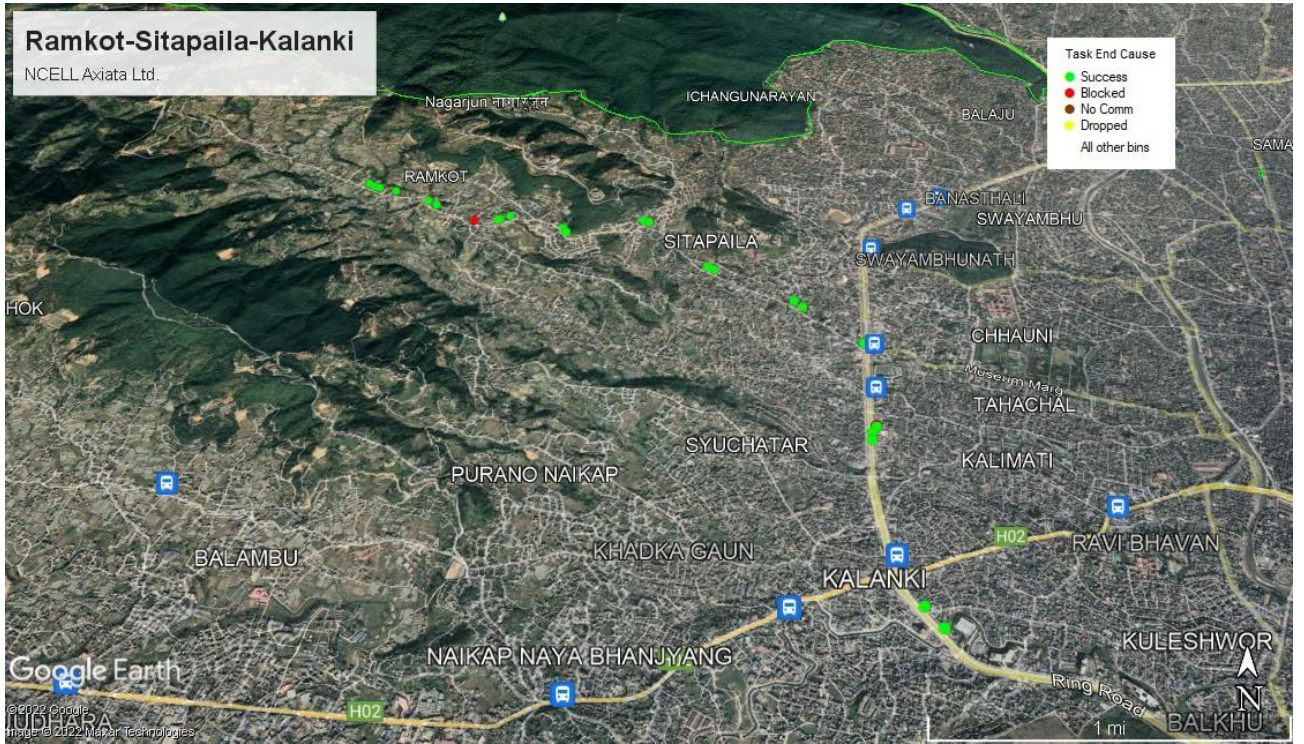


### CALL BLOCK RATE

Call Block Rate			
Attempted Calls	Established Calls	Blocked Calls	Call Block Rate (%)
15	13	2	13.33

### CALL DROP RATE

Call Drop Rate			
Total Attempts	Established Calls	Dropped Calls	Call Drop Rate (%)
15	13	0	0



मोबाईल सेवाप्रदायक : स्मार्ट टेलिकम प्रा. लि.

## CALL TEST REPORT

### OPERATOR INFORMATION

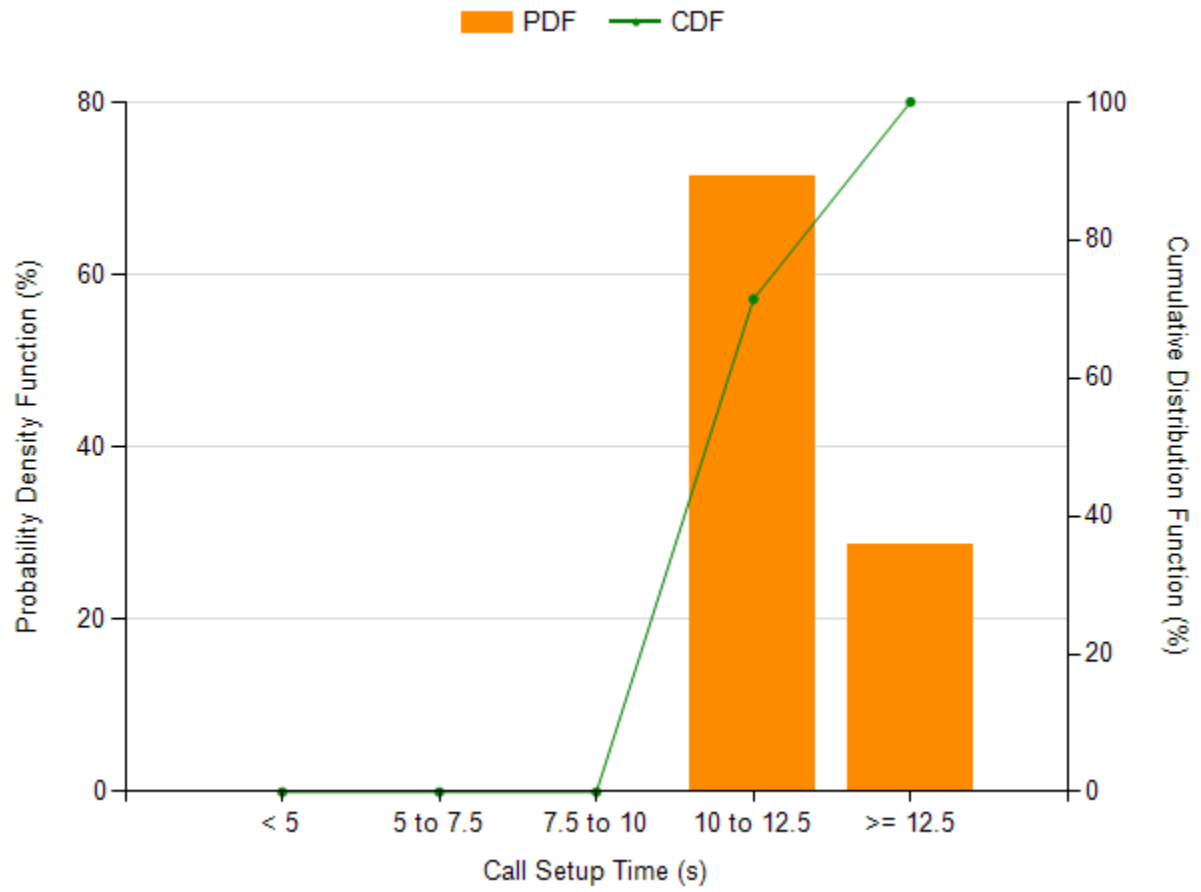
Device Label	Mobile Country Code (MCC)	Mobile Network Code (MNC)
SMART	429	4

### CALL SETUP SUCCESS RATE

Call Setup Success Rate		
Total Attempts	Established Calls	Call Setup Success Rate (%)
17	12	70.59

### CALL SETUP TIME

Call Setup/Connection Time			
Setup Time (s)	Standard Deviation (s)	Minimum (s)	Maximum (s)
12.04	1.85	10.42	17.41



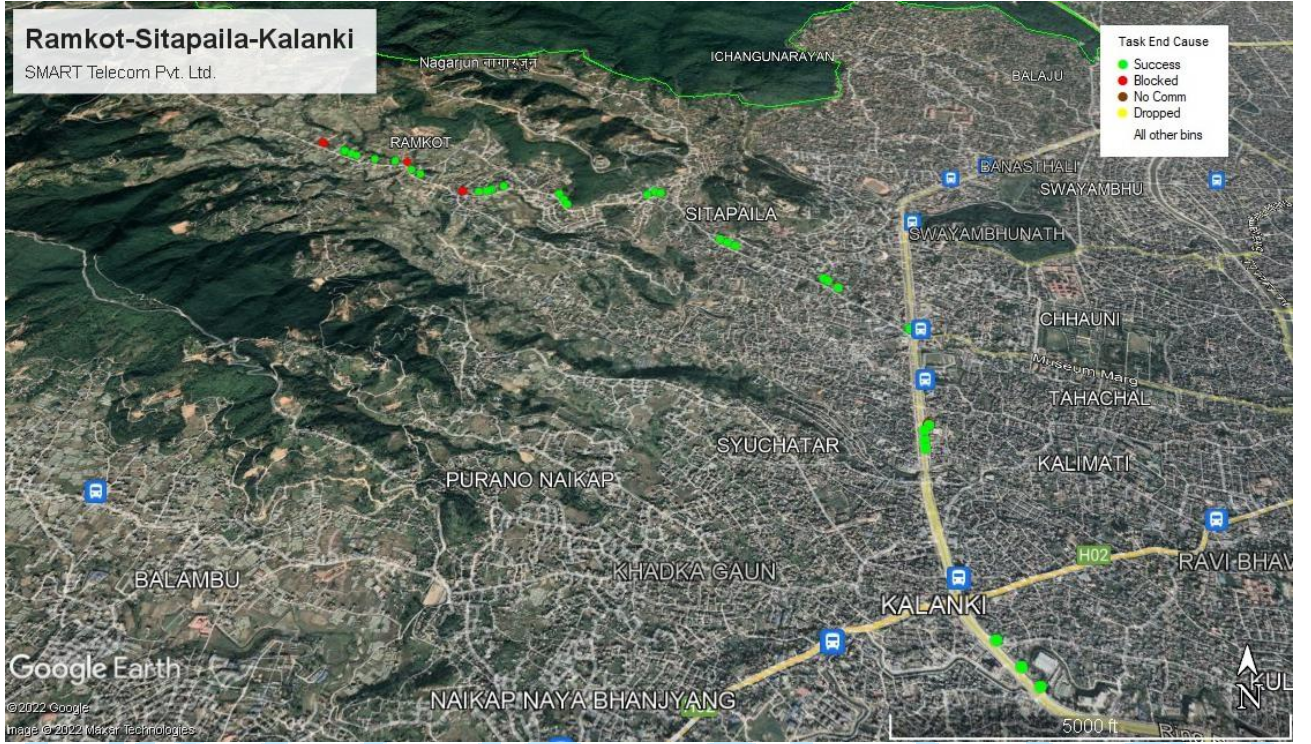
### CALL BLOCK RATE

Call Block Rate			
Attempted Calls	Established Calls	Blocked Calls	Call Block Rate (%)
17	12	5	29.41

### CALL DROP RATE

Call Drop Rate			
Total Attempts	Established Calls	Dropped Calls	Call Drop Rate (%)
17	12	0	0





ड्राइभ टेष्ट गरिएको मिति: २०७८/०९/२७

ड्राइभ टेष्ट गरिएका क्षेत्र : ठमेल, सामाखुशी, गोंगबु, धापासी, महांकाल, गोलफुटार, बर्फेदी

मोबाईल सेवाप्रदायक : नेपाल दूरसंचार कम्पनी लि.

### CALL TEST REPORT

#### OPERATOR INFORMATION

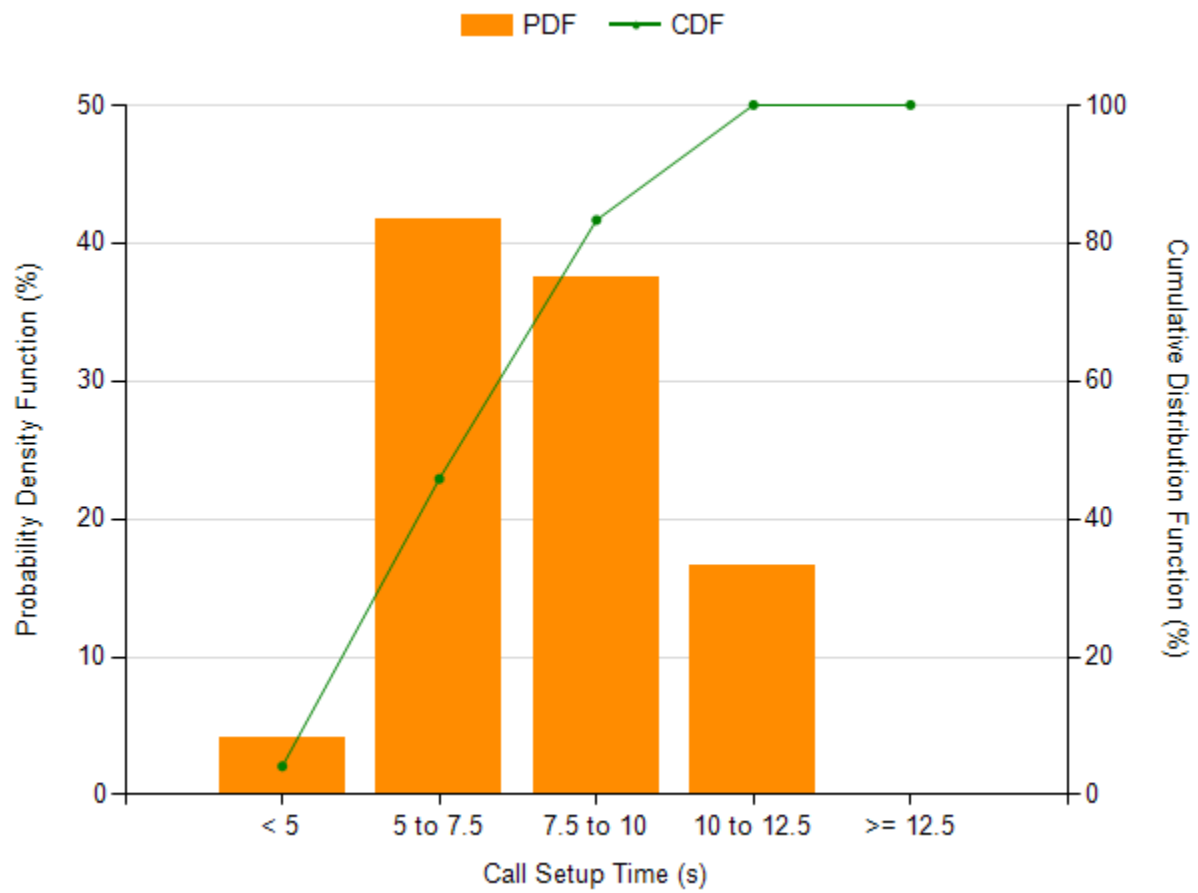
Device Label	Mobile Country Code (MCC)	Mobile Network Code (MNC)
NDCL	429	1

#### CALL SETUP SUCCESS RATE

Call Setup Success Rate		
Total Attempts	Established Calls	Call Setup Success Rate (%)
24	22	91.67

#### CALL SETUP TIME

Call Setup/Connection Time			
Setup Time (s)	Standard Deviation (s)	Minimum (s)	Maximum (s)
7.68	1.98	4.14	12.11

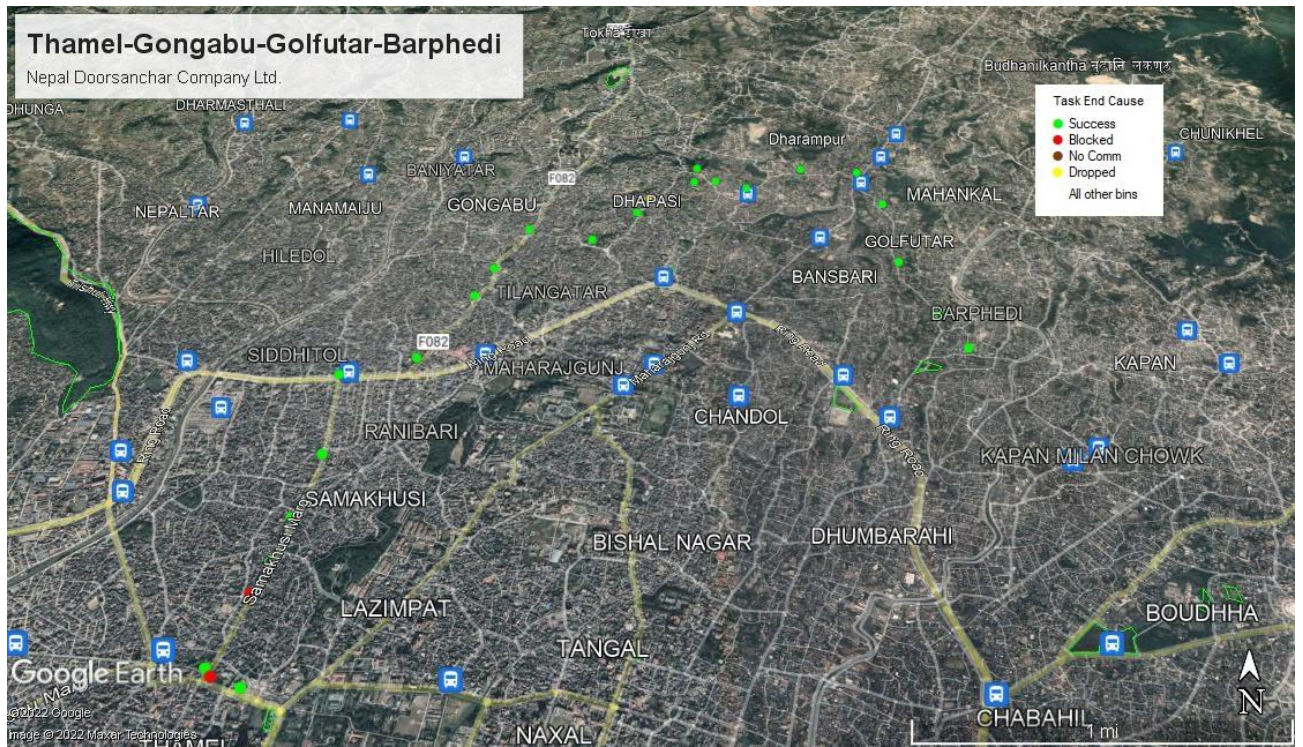


### CALL BLOCK RATE

Call Block Rate			
Attempted Calls	Established Calls	Blocked Calls	Call Block Rate (%)
24	22	2	8.33

### CALL DROP RATE

Call Drop Rate			
Total Attempts	Established Calls	Dropped Calls	Call Drop Rate (%)
24	22	1	4.55



मोबाईल सेवाप्रदायक : एनसेल अजियटा लि.

## CALL TEST REPORT

### OPERATOR INFORMATION

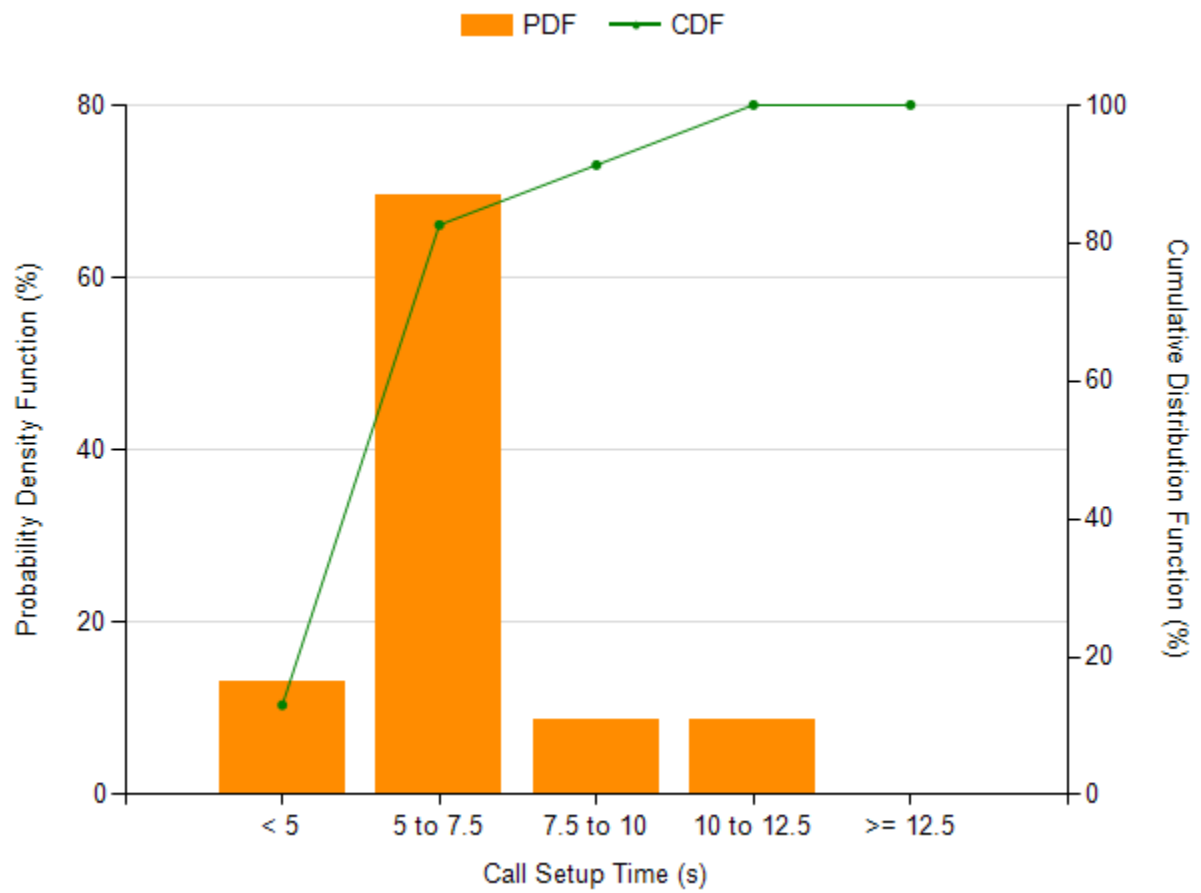
Device Label	Mobile Country Code (MCC)	Mobile Network Code (MNC)
NCELL	429	2

### CALL SETUP SUCCESS RATE

Call Setup Success Rate		
Total Attempts	Established Calls	Call Setup Success Rate (%)
22	21	95.45

### CALL SETUP TIME

Call Setup/Connection Time			
Setup Time (s)	Standard Deviation (s)	Minimum (s)	Maximum (s)
6.56	1.8	4.42	11.7

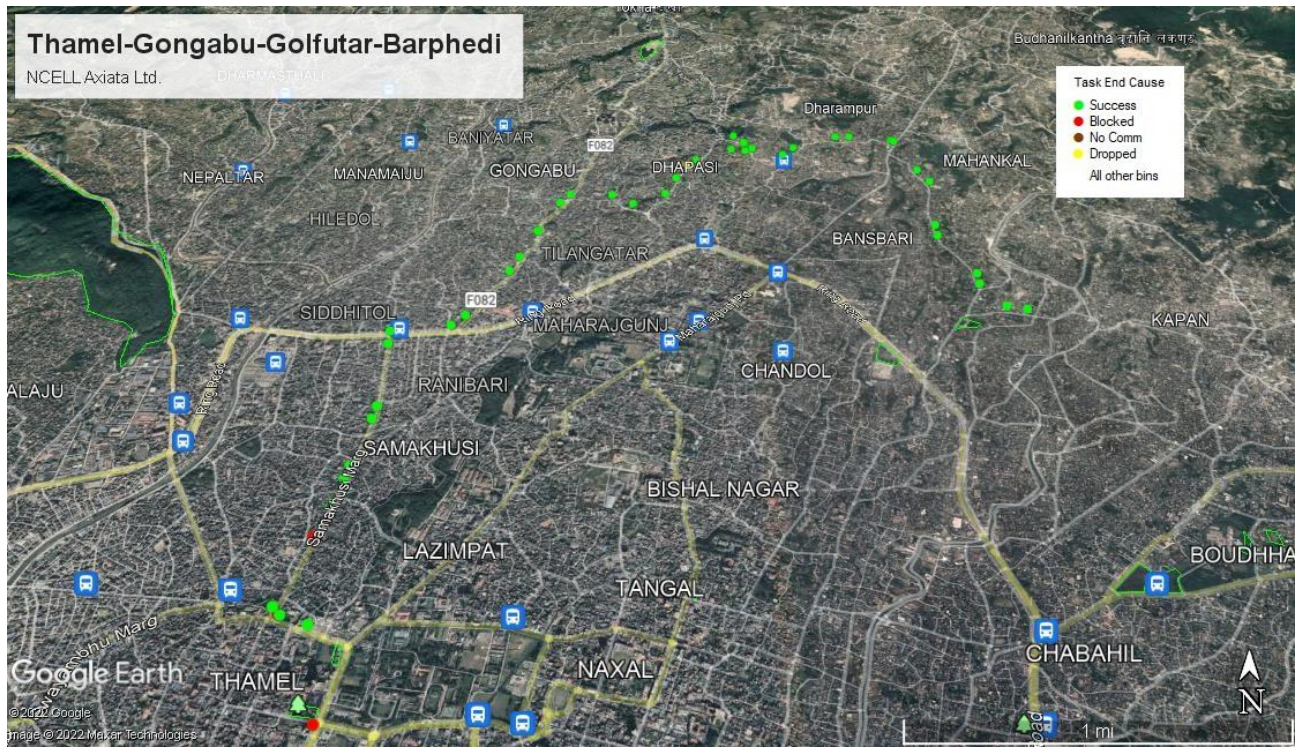


### CALL BLOCK RATE

Call Block Rate			
Attempted Calls	Established Calls	Blocked Calls	Call Block Rate (%)
22	21	1	4.55

### CALL DROP RATE

Call Drop Rate			
Total Attempts	Established Calls	Dropped Calls	Call Drop Rate (%)
22	21	0	0



मोबाईल सेवाप्रदायक : स्मार्ट टेलिकम प्रा. लि.

## CALL TEST REPORT

### OPERATOR INFORMATION

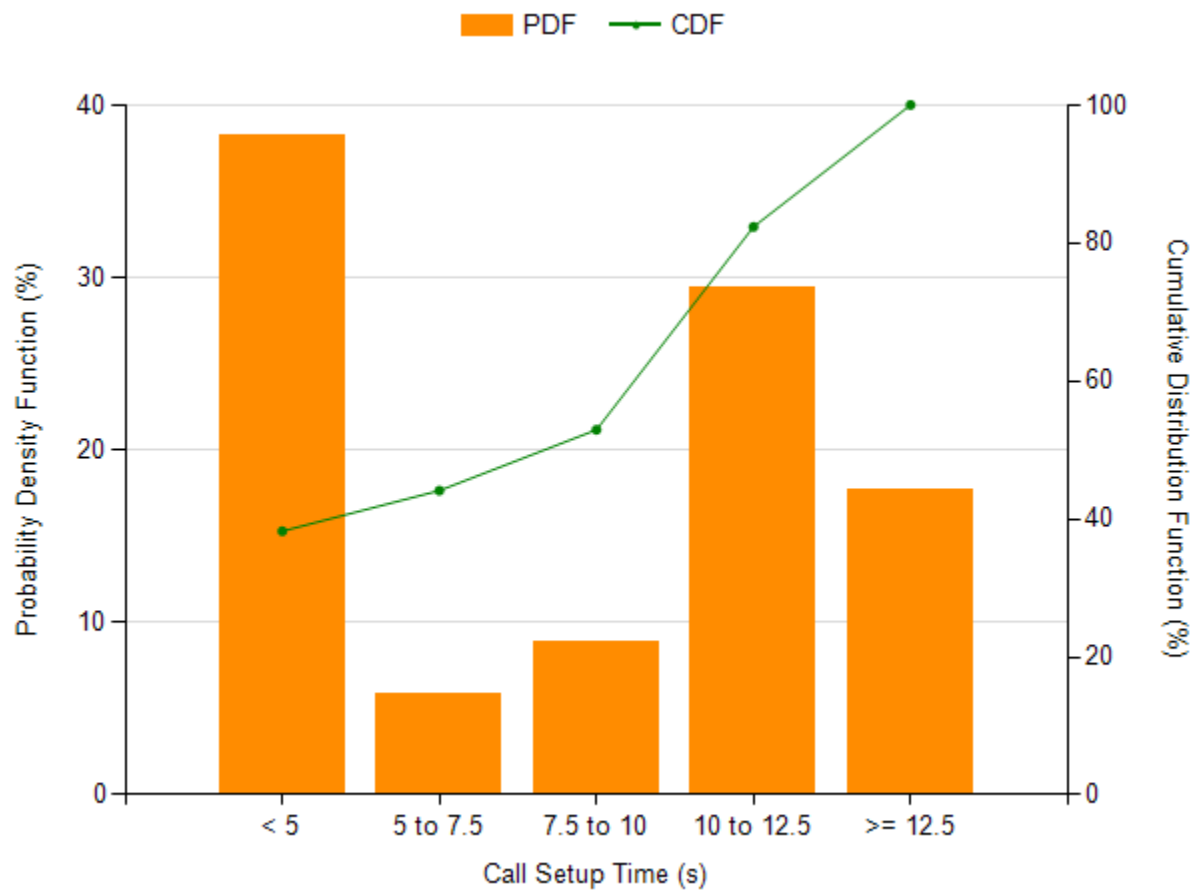
Device Label	Mobile Country Code (MCC)	Mobile Network Code (MNC)
SMART	429	4

### CALL SETUP SUCCESS RATE

Call Setup Success Rate		
Total Attempts	Established Calls	Call Setup Success Rate (%)
47	34	72.34

### CALL SETUP TIME

Call Setup/Connection Time			
Setup Time (s)	Standard Deviation (s)	Minimum (s)	Maximum (s)
8.51	4.38	3.48	16.94



### CALL BLOCK RATE

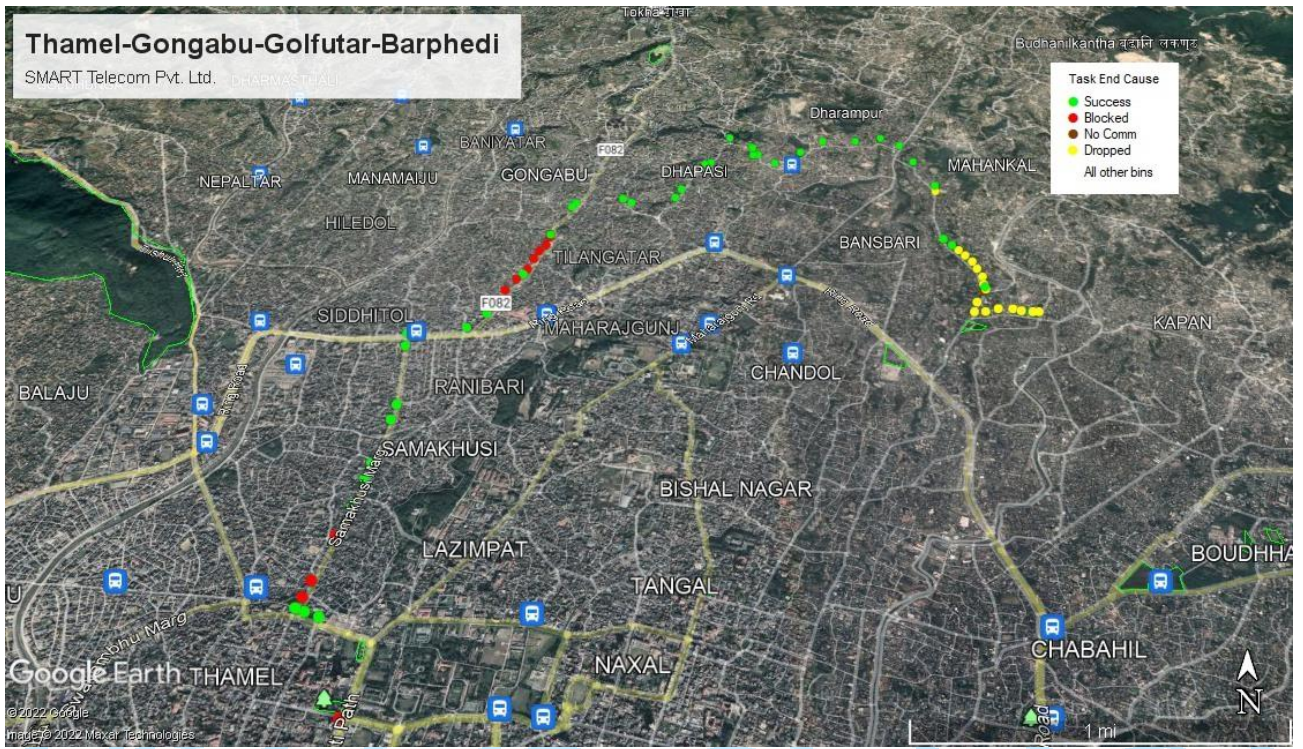
Call Block Rate			
Attempted Calls	Established Calls	Blocked Calls	Call Block Rate (%)
47	34	13	27.66

### CALL DROP RATE

Call Drop Rate			
Total Attempts	Established Calls	Dropped Calls	Call Drop Rate (%)
47	34	17	50

# Thamel-Gongabu-Golfutar-Barphedi

SMART Telecom Pvt. Ltd.



## ६. निष्कर्ष :

मिति २०७८/०९/१६ देखि २०७८/०९/२७ गते सम्म काठमाण्डौ उपत्यकाका विभिन्न स्थानहरूमा गरिएको भ्वाईस सेवाको गुणस्तर परीक्षणको नतिजा सारांशरूपमा देहायको तालिकामा प्रस्तुत गरिएको छ ।

Date		9/16/2078			9/18/2078			9/19/2078			9/20/2078			9/21/2078		
Drive Test Area		New Baneshwor, Shankhamul, Gwarko, Imadol, Sanagaun, Lubhu, Lamatar			Imadol, Gwarko, Satdobato, Ekantakuna, Dhobighat, Balkhu, Kalanki, Swayambhu, Banasthali, Naya Bazar, Sorhakutte, Thamel			Jamal, Gyaneshwor, Gaushala, Gaurighat, Chabhil, Trivubhan Int'l airport, Sinamangal, Koteshwor, Balkumari, Gwarko			Mitrpark, Tusal, Kumarigal, Bouddha, Chabhil, Dhumbarahi, Kapan, Golfutar, Budhanilkantha, Pasikot, Hattigauda, NarayanGopal Chowk, Maharajgunj, Lazimpat, Lainchaur			Satdobato, Nakhipot, Kusunti, Ekantakuna, Jhamsikhel, Sanepa, Kupandol, Tripureshwor, Jamal		
Telecom Service Provider		NDCL	NCELL	SMART	NDCL	NCELL	SMART	NDCL	NCELL	SMART	NDCL	NCELL	SMART	NDCL	NCELL	SMART
Key Performance Indicator	NTA Threshold															
Call Setup Success Rate	>=99.99%	96.55	96.43	34.48	93.1	90.3	60.98	75	95.65	91.3	97.06	96.97	81.08	77.42	96.15	82.76
Call Setup Time	< =5 sec	9.21	6.06	12.87	9.62	6.52	11.5	9.7	6.44	11.75	9.88	6.31	12.4	9.59	6.44	12.17
Grade of Service(Call Block Rate)	<=2%	3.45	3.57	65.52	6.9	9.68	39.02	25	4.35	8.7	2.94	3.03	18.92	22.58	3.85	17.24
Call Drop Rate	<=2%	3.57	0	0	0	3.57	8	9.52	0	0	12.12	0	0	4.17	0	4.17

Note: NTA=Nepal Telecommunications Authority ; NDCL= Nepal Doorsanchar Company Ltd. ; NCELL= Ncell Axiata Ltd.; SMART=Smart Telecom Pvt. Ltd.

Complied		Not Complied	
----------	--	--------------	--



Date		9/22/2078			9/23/2078			9/25/2078			9/26/2078			9/27/2078			Average		
Drive Test Area		Koteshwor, Purano Sinamangal, Chabhil, Sundartole, Bouddha, Jorpati, Thali, Kapan, Dhumbarahi			Bungmati, Chyasikot, Bhaisepati, Nakhkhu, Ekantakuna, Jawalakhel, Kupandol, Tripureshwor, Jamal			Singhadurbar, New Baneshwor, Milanchowk, Bhimsengola, Gaushala, Gaurighat, Purano Sinamangal, Pepsicola, Koteshwor, Gwarko			Sitapaila, Ramkot, Kalanki			Thamel, Samakhusi, Gongabu, Dhapasi, Mahankal, Golfutar, Barphedi					
Telecom Service Provider		NDCL	NCELL	SMA RT	NDCL	NCELL	SMA RT	NDCL	NCELL	SMART	NDCL	NCELL	SMART	NDCL	NCELL	SMA RT	ND CL	NCE LL	SMA RT
Key Performance Indicator	NTA Thres hold																		
Call Setup Success Rate	>=99.99%	83.78	89.47	84.62	100	93.1	92.86	86.21	80.65	82.76	92.86	86.67	70.59	91.67	95.45	72.34	89	92	72
Call Setup Time	<=5 sec	9.66	5.72	12.38	8.98	6.41	11.36	9.5	5.57	11.67	8.7	6.8	12.04	7.68	6.56	8.51	9.32	6.24	11.54
Grade of Service( Call Block Rate)	<=2 %	16.22	10.53	15.38	0	6.9	7.14	13.79	19.35	17.24	7.14	13.33	29.41	8.33	4.55	27.66	11	8	28
Call Drop Rate	<=2 %	3.23	2.94	6.06	3.7	0	7.69	0	4	4.17	0	0	0	4.55	0	50	4.38	1.18	10

Note: NTA=Nepal Telecommunications Authority ; NDCL= Nepal Doorsanchar Company Ltd. ; NCELL= Ncell Axiata Ltd.; SMART=Smart Telecom Pvt. Ltd.

Complied		Not Complied	
----------	--	--------------	--

## ७. टिप्पणीहरू

प्रस्तुत तथ्यांकले उल्लेखित मितिमा उल्लेखित स्थानहरूमा उपलब्ध मोबाइल नेटवर्कहरूको अवस्थालाई इन्डिकत गर्छ, अन्य स्थानहरूमा उपलब्ध मोबाइल नेटवर्कहरूको अवस्था फरक हुन सक्छ।

### विस्तृत जानकारीको लागि

सेवा गुणस्तर स्तरीकरण शाखा  
नेपाल दूरसञ्चार प्राधिकरण  
जमल, काठमाडौं  
जी. पी. ओ. बक्स: ९७५४  
फोन नं.: ९७७-१-५३५५४७४  
फ्याक्स: ९७७-१-५३५५२५०  
इमेल: ntra@nta.gov.np  
वेबसाइट: [www.nta.gov.np](http://www.nta.gov.np)

## E. Remarks

Statistics Presented above represent the network conditions of the operators on the specified places during the period of Drive Test, the network conditions on other areas can differ.

### For Detailed Information

Service Quality Standardization Section  
Nepal Telecommunications Authority  
Jamal, Kathmandu  
GPO Box: 9754  
Phone No: 977-1-5355474  
Fax: 977-1-5355250  
Email: ntra@nta.gov.np  
Website: [www.nta.gov.np](http://www.nta.gov.np)

