

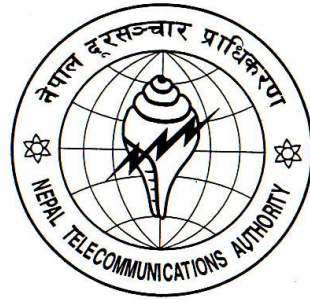
X Year

Issue 32<sup>nd</sup>

Vol. 80

Ashad, 2068 (15 June -14 July, 2011)

# Nepal Telecommunications Authority



## Management Information System

**Published in  
Bhadra, 2068 (July, 2011)**

**P.O. Box No. 9754  
Bluestar Office Complex  
Tripureshwore, Kathmandu, Nepal  
Tel.: +977-1-43101030-38  
Fax: +977-1-4101034  
E-mail: [ntra@nta.gov.np](mailto:ntra@nta.gov.np), [info@nta.gov.np](mailto:info@nta.gov.np)  
URL: [www.nta.gov.np](http://www.nta.gov.np)**

## 1. Telecom Statistics at a glance (as of Ashad , 2068, 14 July, 2011)

### 1.1 Available Voice Telephony Services

Services Operators	Fixed		Mobile		Others		Total
	PSTN	WLL	GSM	CDMA	LMS	GMPCS*	
<b>NDCL</b>	603,291	157,095	5,121,518	862,072	-	-	<b>6,743,976</b>
<b>UTL</b>	-	70,741	-	-	502,888	-	<b>573,629</b>
<b>NCELL</b>	-	-	5,619,224	-	-	-	<b>5,619,224</b>
<b>STM</b>	5,090	-	-	-	155	-	<b>5,245</b>
<b>NSTPL</b>	-	2,502	-	-	88,933	-	<b>91,435</b>
<b>Smart</b>	598	-	-	-	127,800	-	<b>128,398</b>
<b>Others (GMPCS)</b>	-	-	-	-	-	1,742	<b>1,742</b>
<b>Total</b>	<b>608,979</b>	<b>230,338</b>	<b>10,740,742</b>	<b>862,072</b>	<b>719,776</b>	<b>1,742</b>	<b>13,163,649</b>
	<b>839,317</b>		<b>11,602,814</b>		<b>721,518</b>		
Tele-Density							
<b>Services</b>					<b>Penetration Rate %</b>		
Fixed					2.93		
Mobile					40.59		
Others (LM, GMPCS)					2.52		
<b>Total</b>					<b>46.05</b>		

Note: Projected population for 2011 is 28,584,975 (Source : cbs.gov.np)

\* Current data didn't submitted by the service providers.

### 1.2 Data/Internet Services

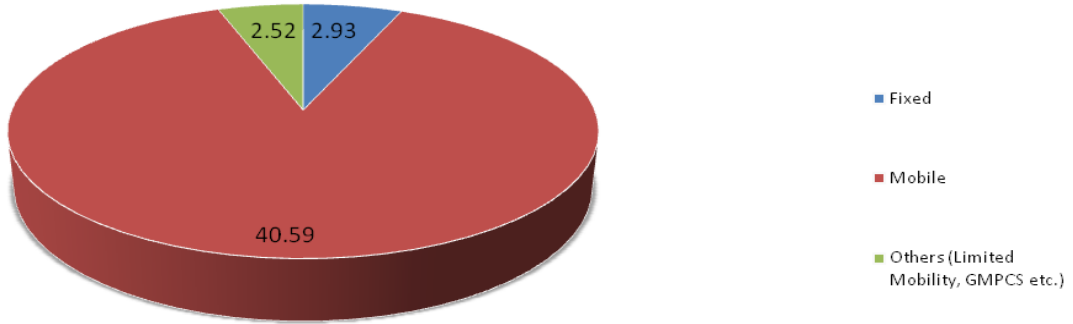
Services	Subscribers				Total
	NDCL	UTL	NCELL	ISPs*	
Dialup (PSTN +ISDN)	5,745	-	-	14,610	20,355
Wireless Modem, Optical Fibre Ethernet	-	-	-	22,288	22,288
Cable Modem, Cable etc.	-	-	-	15,629	15,629
ADSL	68,343	-	-	-	68,343
GPRS	956,617	-	1,874,078	-	2,830,695
CDMA 1X	103,171	51,377	-	-	154,548
<b>Total</b>	<b>1,133,876</b>	<b>51,377</b>	<b>1,874,078</b>	<b>52,527</b>	<b>3,111,858</b>
<b>Internet Penetration Rate %</b>					<b>10.89</b>

\* Licensee wise ISP's subscribers is shown in Appendix-II

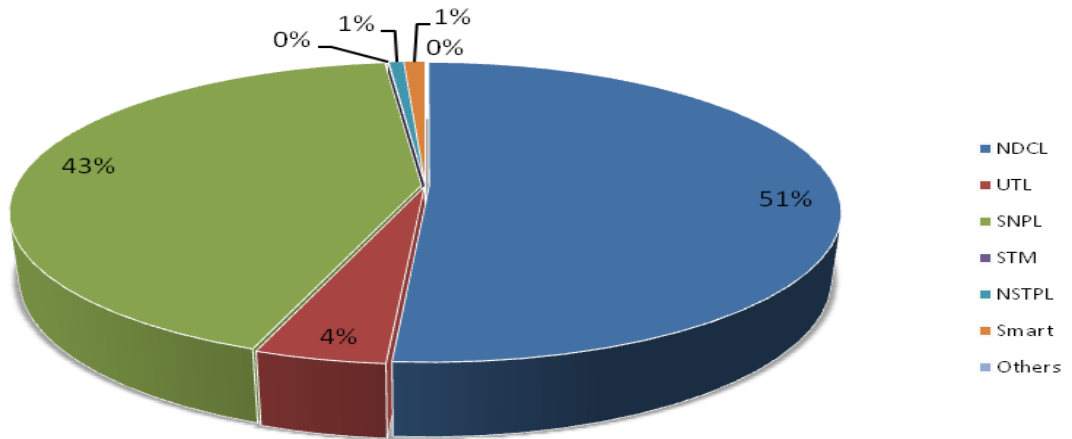
### 1.3 Public Call Centres (PCO)

Services	Subscribers
Rural PCO's of STM Telecom Sanchar Pvt. Ltd.	2,012
Rural PCO's of SMART Telecom Pvt. Ltd.	598
<b>Total</b>	<b>2,610</b>

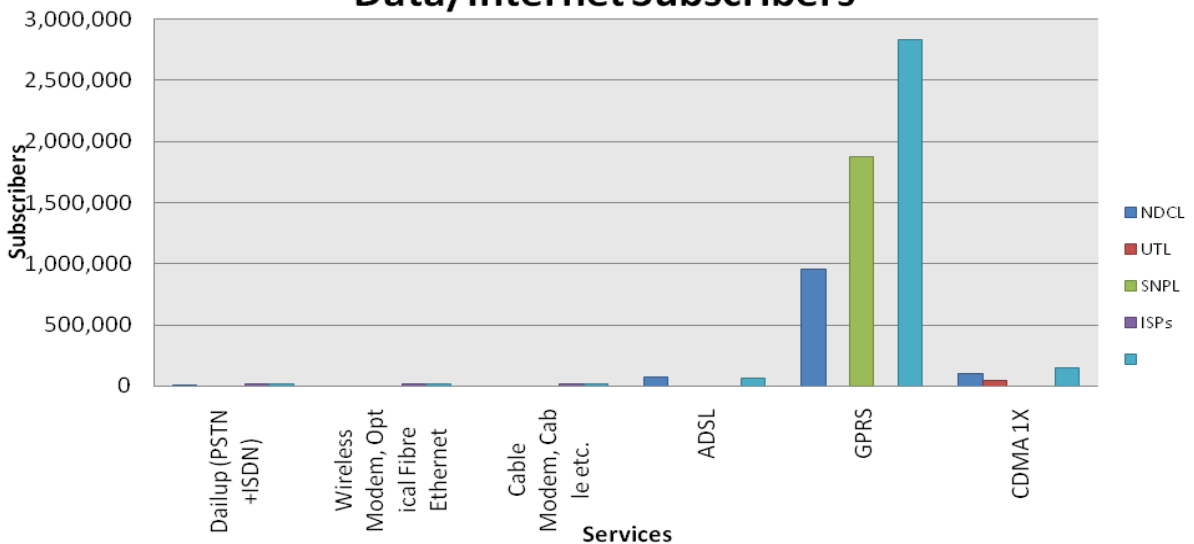
### Telephone Penetration Rate



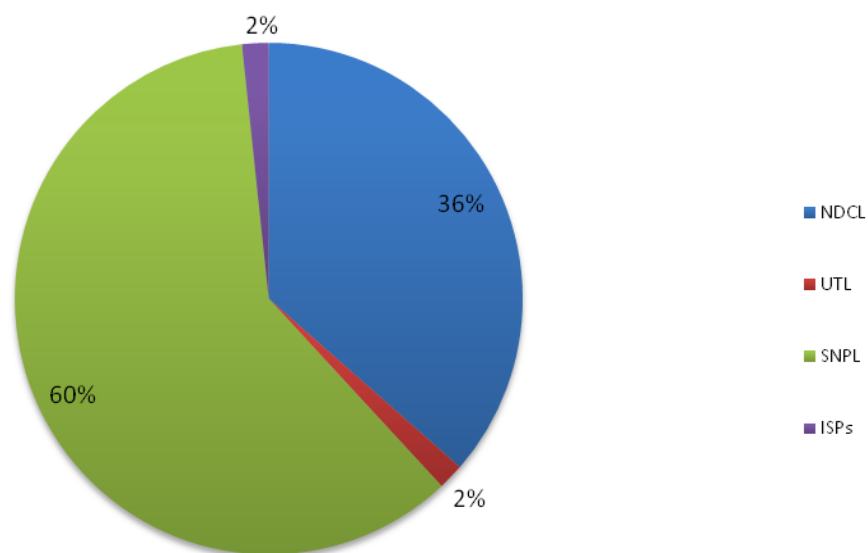
### Market Share of Telephone Subscribers



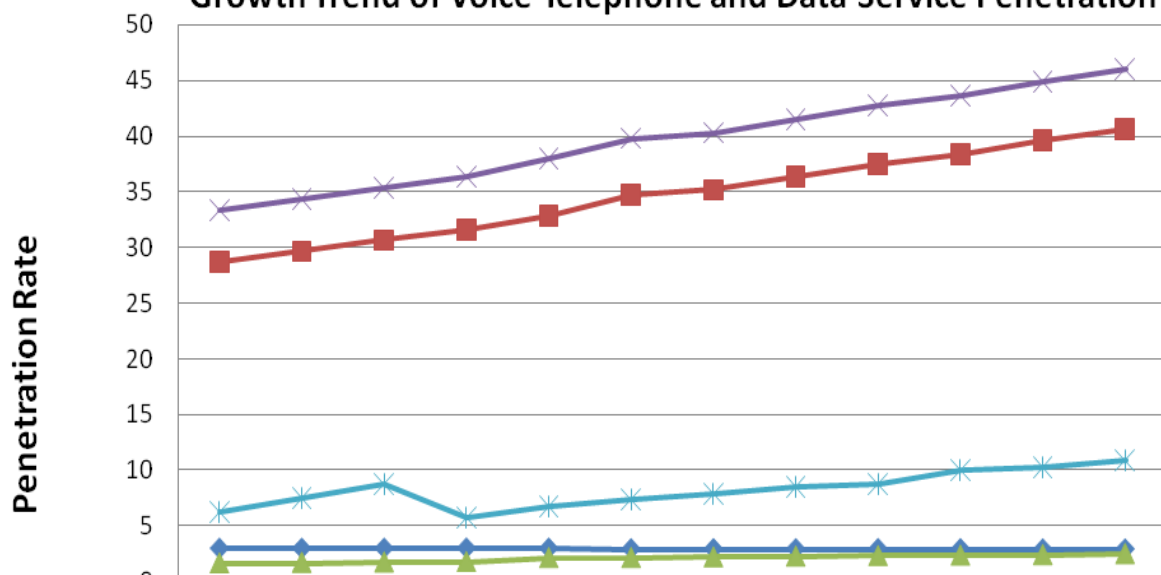
### Data/Internet Subscribers



The market share of data/internet subscribers



Growth Trend of Voice Telephone and Data Service Penetration

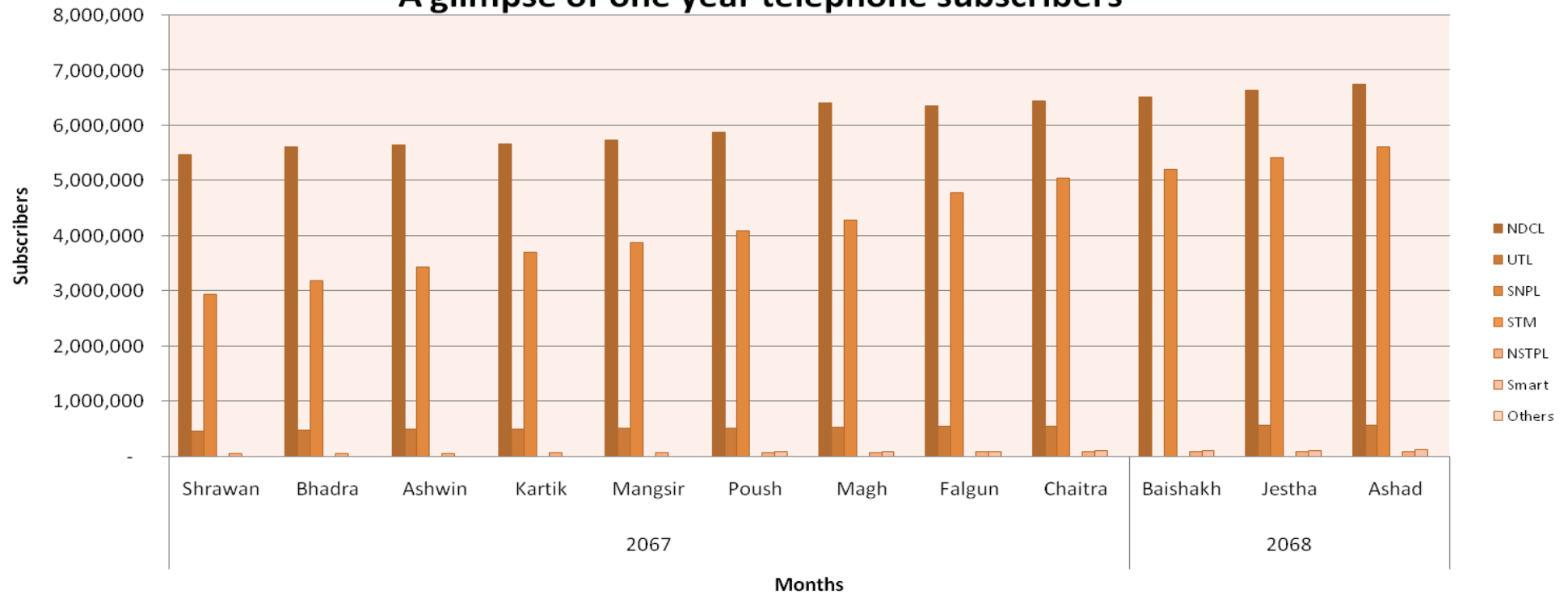


Month	Shrawan	Bhadra	Ashwin	Kartik	Mangsir	Poush	Magh	Falgun	Chaitra	Baishak	Jestha	Ashad
Fixed	2.99	2.99	3.00	3.01	3.00	2.94	2.95	2.95	2.96	2.96	2.93	2.93
Mobile	28.64	29.61	30.61	31.56	32.79	34.7	35.13	36.27	37.47	38.31	39.53	40.59
Other	1.67	1.73	1.76	1.8	2.15	2.16	2.22	2.29	2.34	2.38	2.43	2.52
Total	33.3	34.33	35.37	36.37	37.95	39.8	40.3	41.51	42.77	43.65	44.9	46.05
Data/Internet	6.29	7.49	8.76	5.79	6.78	7.43	7.93	8.49	8.74	10.03	10.28	10.89

### A glimpse of one year telephone subscribers

S.No.	Operators	2067									2068		
		Shrawan	Bhadra	Ashwin	Kartik	Mangsir	Poush	Magh	Falgun	Chaitra	Baishakh	Jestha	Ashad
1	NDCL	5,468,191	5,608,875	5,640,839	5,655,649	5,734,247	5,875,025	6,402,131	6,346,808	6,439,735	6,510,034	6,637,070	6,743,976
2	UTL	460,800	476,351	490,296	500,519	510,236	520,820	530,721	545,854	555,986	5,62,797	569,142	573,629
3	SNPL	2,942,650	3,188,447	3,428,491	3,691,266	3,878,616	4,084,444	4,283,659	4,785,715	5,036,722	5,207,239	5,421,414	5,619,224
4	STM	4,841	4,841	4,841	4,968	4,968	5,159	5,179	5,220	5,220	5,392	5,399	5,245
5	NSTPL	54,739	57,135	58,528	62,195	63,815	66,027	71,875	86,225	86,799	85,479	89,337	91,435
6	Smart	484	484	3,902	4,885	4,885	88,249	88,249	94,572	99,556	103,988	109,229	128,398
7	Others	1,742	1,742	1,742	1,742	1,742	1,742	1,742	1,742	1,742	1,742	1,742	1,742

### A glimpse of one year telephone subscribers



#### 1.4 Licence issued by NTA\* (Existing as of Ashad, 2068, 14 July 2011)

S.No.	Name of the Services	Number of the licensee
1.	Basic Telecommunications	3
2.	Cellular Mobile	2
3.	Network Service Provider	9
4.	VSAT User	100
5.	Internet (With E-mail)	48
6.	GMPCS	3
7.	Rural Telecom	2
8.	Limited Mobility	108
9.	International Trunk Telephone	3
10.	Rural VSAT User	9
11.	Rural Internet Service Provider	6
	<b>Total</b>	<b>293</b>

\* Year wise licensing activity of NTA is shown in Appendix-1

## 2. NTA Activities

### 2.1 Type Approval Certificate

The type approval certificates for 6 Short Range Devices ,3 GSM Mobile Set, 3 GSM Device and 1 CDMA Device have been issued during the month of Ashad as given below.

Short Range Devices				
S. N.	Provisional	Brand Name	Model No.	Equipment Type
1	R-SRD-P-124	Atheros	AR5BBU22	Bluetooth V2.1+EDR USB Module
2	R-SRD-P-125	Broadcom	BCM94331PCIEBT3A	802.11a/g/n WLAN + Bluetooth PCI-E Custom Combination
3	R-SRD-P-126	HP	MRN	2.4 GHz Wireless Dongle
4	R-SRD-P-127	HP	KBI	2.4 GHz Wireless Keyboard
5	R-SRD-P-128	HP	G33	2.4 GHz Wireless Mouse
6	R-SRD-P-129	HP	SD-9080	2.4 GHz Wireless Dongle
GSM Mobile Set				
S. N.	Provisional	Brand Name	Model No.	Equipment Type
1	R-GSM-MH-P-148	NOKIA	E6-00 (Type RM-609)	3 G Mobile Phone with Bluetooth and WLAN
2	R-GSM-MH-P-149	NOKIA	C2-00 (Type RM-704)	GSM Mobile with Bluetooth
3	R-GSM-MH-P-150	NOKIA	X1-01 (Type: RM-713)	GSM Mobile Phone
GSM Device				
S. N.	Provisional	Brand Name	Model No.	Equipment Type
1	R-GSM-D-P-5	GPS Traker	AL-800C	GSM based GPS Tracker
2	R-GSM-D-P-6	Rakshak	RK100-G	GSM based community siren
3	R-GSM-D-P-7	ZTE	MF190	3G data card

CDMA Device				
S. N.	Provisional	Brand Name	Model No.	Equipment Type
1	R-CDMA-D-P-2	Rakshak	RK100-C	CDMA based community siren

**2.2 Foreign Currency Recommendation Recommendation for Payment of Bandwidth Cost:** NTA, pursuant to section 35 of Telecommunication Act, 1997, recommended to MOIC to avail Foreign Exchange facility to the licensees for the payment of Bandwidth cost to an aggregated amount of NRs. **182,191,377.06** in the month of Ashad.

**Recommendation for Import of Telecommunications Equipment:** During the month of Ashad recommendation for the import of Telecommunications equipment amounting to a total of NRs. **288,866,298.11** had been made by NTA.

### 2.3 Human Resource and Capacity Building

#### a) International Training, Seminar, Study and Observation Tours/Visit:

S.No.	Program	Date	Place	Participant's Name
1.	Workshop on Spectrum Management in a Converged environment	2068/2/30 to 2068/3/5	Bankok, Thailand	Mr.Roja Kiran Bashukala Mr.Babli Kumari Khadka
2.	SATRC Workshop on Network and Services	2068/3/27 to 2068/3/31	Bhutan	Mr.Kumar Prasad Sharma Mr.Kabindra Shrestha

### 2.4 License Cancelled:

S. No.	Name of Licensee	Service	Date (mm/dd/yy)
1.	Nepal Dursanchar Company Limited, Bhadrakali, Kathmandu	Limited Mobility	3/6/2068
2.	Logic Information Business P. Ltd., Chabahil	Internet/Email	3/24/2068
3.	Namaste Asia Link Pvt.Ltd., Lainchaur, Kathmandu	Internet/Email	3/24/2068
4.	Himal Power Limited, Dolakha Terminal	VSAT User	3/6/2068
5.	Butwal Power Company Ltd. Syanja	VSAT User	3/21/2068
6.	Butwal Power Company Ltd. Pyuthan	VSAT User	3/21/2068

### 3. NTA's Major Decisions during the month of Ashad, 2068: NA

#### 4. List of the members of Nepal Telecommunications Authority

S.No.	Members Name	Designation	Date of Appointment
1.	Mr. Bhesh Raj Kanel	Chairman	2065/08/08
2.	Mr Mahesh Prasad Adhikari	Member	2063/09/09
3.	Mr. Balaram Pradhananga	Member	2063/09/09
4.	Mr Tulsi Bhatta	Member	2064/04/07
5.	Mr. Girindra Raj Adhikari	Member	2065/09/23

#### **For Details Contact :**

**Mr. Arjun Ghimire**

**Deputy Director**

**Mr. Sandip Adhikari**

**Assistant Director**

**Consumer and Economic Analysis Section**

**Bluestar Office Complex,**

**Tripureshwor, Kathmandu**

**Phone No.: +977-1-4101030-38 (Ext. 243, 224)**

**Fax No.: +977-1-4101034**

**E-mail: aghimire@nta.gov.np, sadhikari@nta.gov.np**

**URL: www.nta.gov.np**



## NTA Licensing Activity at a glance as of 15 July 2010 (End of Ashad 2067)

S. No.	Services	Fiscal Year												Existing	
		Till 056/57	057/58	058/59	059/60	060/61	061/62	062/63	063/64	064/65	065/66	066/67	Total		License Cancelled
1	Basic Telecommunication	0	1	0	1	0	0	0	0	1	0	0	3	0	3
2	GSM Mobile	1	0	0	0	0	1	0	0	0	0	0	2	0	2
3	Network Service Provider	6	1	3	0	1	0	0	2	1	0	1	15	7	8
4	VSAT User	16	8	11	15	20	6	41	7	0	6	22	152	54	98
5	Internet (with e-mail)	13	2	3	2	6	6	7	3	3	7	12	64	20	44
6	Radio Paging	6	2	0	0	0	0	0	0	0	0	0	8	8	0
7	Fax Mail	4	2	0	0	0	0	0	0	0	0	0	6	6	0
8	Video Conferencing	1	0	0	0	0	0	0	0	0	0	0	1	1	0
9	GMPCS	0	0	0	2	0	0	0	1	0	0	0	3	0	3
10	Rural Telecom	0	0	0	0	1	0	0	0	1	0	0	2	0	2
11	Limited Mobility	0	0	0	0	0	0	2	4	4	3	35	48	0	48
12	Int. Trunk Telephone	0	0	0	0	0	0	0	0	2	0	0	2	0	2
13	Rural VSAT User	0	0	0	0	0	0	0	0	1	2	5	8	0	8
14	Rural ISP	0	0	0	0	0	0	0	0	0	1	5	6	0	6
<b>Total</b>		<b>47</b>	<b>16</b>	<b>17</b>	<b>20</b>	<b>28</b>	<b>13</b>	<b>50</b>	<b>17</b>	<b>13</b>	<b>19</b>	<b>80</b>	<b>320</b>	<b>96</b>	<b>224</b>

Source: NTA License Section

## A Glimpse of Subscriber's of Internet Service as on Ashad 2068

S.No.	Company Name	Dialup (PSTN +ISDN)	Wireless Modem, Optical Fibre Ethernet	Cable Modem, Cable etc.	Total
1	STM Telecom Sanchar Pvt.Ltd., Baluwatar, Kathmandu	-	116	-	116
2	Sustainable Network Pvt.Ltd. Pulchok, Lalitpur	-	91	-	91
3	Cherry World Communication P.Ltd., New Baneshwor, Kathmandu*	-	154	20	174
4	Subisu Cablenet Pvt. Ltd. Baluwatar, Kathmandu	-	763	4,513	5,276
5	Fiber Online Pvt. Ltd., Jawalakhel, Lalitpur	-	-	474	474
6	Everest Net (Pvt) Ltd. Jawalakhel, Lalitpur	1,370	-	-	1,370
7	Namche Networks Pvt. Ltd.*	-	-	26	26
8	Pokhara Internet Pvt. Ltd., Pokhara, Kaski*	-	-	15	15
9	Broadlink Network & Communication Pvt.Ltd., Kathmandu*	-	11,792	-	11,792
10	WorldLink Communications (Pvt.) Ltd. Jawalakhel, Lalitpur	3,998	7,580	8,280	19,858
11	Surfin Pvt.Ltd., Putalisadak, Kathmandu*	-	26	-	26
12	Iplus Pvt. Ltd, Lazimpat	-	-	65	65
13	Classic Tech Pvt. Ltd., Baneshwor, Kathmandu	-	211	41	252
14	Square Networks Pvt. Ltd.*	-	15	3	18
15	Mitra Networkr Pvt.Ltd. Manbhawan, Lalitpur*	-	10	65	75
16	Japan Nepal Information Communication Technology, Kalikasthan*	152	-	-	152
17	Himalayan Online Services (Pvt) Ltd. Durbarmarg, Kathmandu*	-	266	653	919
18	Vianet communicatuins Pvt. Ltd., Sidhibhawan, Kathmandu	300	465	157	922
19	Eastlink Technology Pvt. Ltd., Tripureshwor, Kathmandu	-	92	21	113
20	Health Net Nepal, Jaya Bageswori, Kathmandu*	-	-	24	24
21	Mercantile Communication (Pvt). Ltd. DurbarMarg, Kathmandu*	8,725	350	370	9,445

22	Allied Net Link Technologies Pvt. Ltd., Marajgunj, Kathmandu.*	-	62	1	63
23	Satelink Nepal Pvt.Ltd., Maharajgunj, Kathmandu.	-	19	70	89
24	Net Max Technologies P. Ltd, Anamnagar, Kathmandu*	-	18	28	46
25	Zentech International	-	-	8	8
26	Eastern Networks Pvt. Ltd., Naxal, Kathmandu	-	-	24	24
27	Web Surfer Nepal Company. System Pvt. Ltd. Naxal, Kathmandu	65	258	635	958
28	Radius Communication Pvt.Ltd., Putalisadak, Kathmandu	-	-	136	136
<b>Total</b>		<b>14,610</b>	<b>22,288</b>	<b>15,629</b>	<b>52,527</b>

\* Those ISP who didn't submitted the data for the month of Ashad .